

ANNUAL BIOMEDICAL RESEARCH CONFERENCE FOR MINORITIZED SCIENTISTS

o.ohsu.edu/mgp

CELEBRATING

20 YEARS



ABRCMS 2022

November 9-12 | Anaheim, CA

FINAL PROGRAM



Managed by
**AMERICAN
SOCIETY FOR
MICROBIOLOGY**

Funded by





JOHNS HOPKINS
UNIVERSITY

Vivien Thomas Scholars Initiative



DIVERSE PERSPECTIVES

Strengthen Our
Work and Our World.

Learn about the

Vivien Thomas Scholars Initiative at Johns Hopkins University.

Inspired by the work of Dr. Thomas, the Vivien Thomas Scholars Initiative (VTSI) is dedicated to nurturing, mentoring, and connecting the next generation of **leaders in STEM at historically black colleges and universities and minority-serving institutions.**

As Vivien Thomas Scholars at Johns Hopkins University, students are empowered to grow in discovery and lead in their fields while **earning their PhD in one of over 30 programs.**

[LEARN MORE ABOUT THIS INITIATIVE](#)





Table of Contents

Conference Welcome.....	4
National Institutes of Health (NIH) Greetings	5
ABRCMS Steering Committee	6
ABRCMS Supporters.....	7
20th Anniversary Highlights.....	8
ABRCMS Graduate Symposium Program	9
Schedule at a Glance.....	16
General Conference Information	17
Exhibitor and Judge Corner.....	20
ABRCMS Keynote Speakers.....	22
Concurrent Scientific Speakers	23
Daily Program.....	27
Poster Hall Map.....	41
Poster Presentation Numbers by Scientific Discipline.....	42
Exhibit Hall Map.....	43
Exhibitor Listings.....	44

Recipient of the 2019 AIMBE Excellence in STEM Education Award

Get Social! Follow and use **#ABRCMS2022** on social media.



facebook.com/ABRCMS



twitter.com/ABRCMS



instagram.com/ABRCMS

Download the official conference mobile app for the most up-to-date and detailed information.

Welcome from Dr. Avery August

On behalf of the Steering Committee for Annual Biomedical Research Conference for Minoritized Scientists (ABRCMS), and the American Society for Microbiology, I would like to extend a sincere welcome to ABRCMS 2022. I am so excited that we are back in person after two years of virtual meetings due to the COVID-19 pandemic. And although we are in a different phase of the pandemic, the scientific advances in virology and immunology led to the rapid development of vaccines, allowing us to be able to return to many of the in person activities we value.



Our theme this year “Celebrating 20 Years of Building Community to Innovate in Biomedical and Behavioral Science Research,” tells a story of ABRCMS working to create a truly inclusive community of scientists who are historically excluded, meeting, talking about science, and supporting each other. Since our first meeting in 2001, ABRCMS has been a place where we inspire and support the careers of leaders who are the future of a more diverse scientific enterprise. Starting with a focus on undergraduate students, we are now a thriving community of scientists at all career stages. We welcome those of you for whom this is your first time at ABRCMS, and I know that once you experience our community, this won't be your last.

The core of ABRCMS, and our theme, is “community.” Our community is where you will be able to interact over front line science, from plenary speakers Dr. Carolyn Ruth Bertozzi, a renowned chemist and Nobel laureate, known for her wide-ranging work spanning both chemistry and biology, to Dr. Maria Elena Bottazzi, an emerging disease vaccinologist and global health advocate, to Dr. Mae Jemison, NASA Astronaut and first woman of color in the world to go into space, to Dr. Olajide Williams, Neurologist and co-Founder and President of Hip Hop Public Health. They are joined by a number of accomplished speakers presenting a series of leading edge scientific expert talks, along with a wide range of professional development programs to meet the many needs of our participants, no matter your career stage. I am especially looking forward to the dynamism of the conference, the nervous excitement of those presenting for the first time, not knowing what to expect, but coming to the realization that they are being welcomed to our supportive scientific community.

Join our community in taking in all that we have prepared for you. Network like you haven't done in two years, literally. Engage with the speakers and presenters, visit with the exhibitors, mentor and be mentored, support and be supported, because ABRCMS built this scientific community us.

The ABRCMS Steering Committee, the ASM staff, and the exhibitors have worked hard to deliver everything you see during your time here. Many volunteer judges, presenters, convention center support staff are all here doing a remarkable job to make this meeting possible. I would like to thank them all in advance for all their hard work making this conference a success. And as always, we are eternally grateful for the continued support of Division of Training, Workforce Development, and Diversity at the National Institute of General Medical Sciences, NIH, whose funding has continued to make ABRCMS what it is.

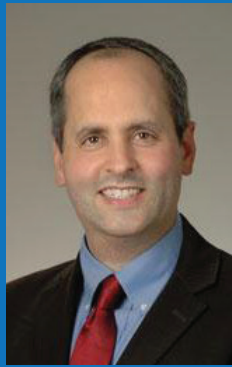
With my warmest wishes

A handwritten signature in black ink, appearing to read 'Avery August'.

Avery August, Ph.D.
Chairperson, ABRCMS

Greetings from NIH

On behalf of the National Institutes of Health's National Institute of General Medical Sciences (NIGMS), we would like to welcome you to the 2022 Annual Biomedical Research Conference for Minoritized Scientists. We are very proud to support this meeting, which brings together a community of outstanding scientists for stimulating discussions of research, careers, and more.



This meeting is one element of our many activities in the areas of training, workforce development, diversity, and research capacity building. Our NIGMS programs range from the high school level through the undergraduate, graduate, postdoctoral and faculty levels. For example, we support an array of programs to enhance diversity in the biomedical research workforce including Science Education Partnership Awards, Bridges to the Baccalaureate, Building Infrastructure Leading to Diversity, Maximizing Access to Research Careers, Research Training Initiative for Scientific Enhancement, Initiative for Maximizing Student Development, Postbaccalaureate Research Education, Bridges to the Doctorate, Institutional Research and Academic Career Development Awards, Maximizing Opportunities for Scientific and Academic Independent Careers, the Diversity Supplement Program, the Native American Research Centers for Health, the Support for Research Excellence Programs, and the National Research Mentoring Network.

For those of you who are attending as mentors and sponsors, we truly appreciate your dedication and many contributions to your students and our shared goals. For those of you still in training, we hope that your involvement in this meeting further inspires and motivates you to pursue careers and leadership positions in the biomedical research workforce and leadership roles in biomedical science. During your time here, you will gain important allies for your future: a community of peers who will become your colleagues and friends as well as a network of scientists and mentors who are deeply committed to your success in pursuit of a research doctorate and a career in the biomedical research workforce.

We encourage you to make the most of the meeting and take every advantage of the resources and opportunities it offers to help you prepare for the next stages of your research career. We look forward to seeing your presentations and talking to you over the course of the next few days.

Sincerely,
Jon R. Lorsch, Ph.D.
Director
National Institute of General Medical Sciences,
National Institutes of Health

Alison Gammie, Ph.D.
Director
Division of Training, Workforce Development, and Diversity,
National Institute of General Medical Sciences, National Institutes of Health



Steering Committee



Avery August, Ph.D., Chairperson
Cornell University, College of
Veterinary Medicine



Lisa Barnes, Ph.D.
Rush University



Squire Booker, Ph.D.
Penn State University



Cherrie Boyer, Ph.D.
University of California, San
Francisco



Arturo Casadevall, M.D., M.S., Ph.D.
The Johns Hopkins University



Lydia Contreras, Ph.D.
University of Texas at Austin



Tracy Johnson, Ph.D.
University of California, Los Angeles



Beronda Montgomery, Ph.D.
Grinnell College



Juan S. Ramirez Lugo, Ph.D.
University of Puerto Rico, Rio Piedras



Mary Sanchez Lanier, Ph.D.
Washington State University



Crystal Watkins, M.D., Ph.D.
MedStar Harbor Hospital

Subcommittees

JUDGES TRAINING AD HOC COMMITTEE



Marlene de la Cruz, Ph.D.
University of California, Irvine



Bolaji Thomas, Ph.D.
Rochester Institute of Technology



Alfredo Torres, Ph.D.
University of Texas Medical Branch at
Galveston

PARTNERSHIP AD HOC COMMITTEE



Cherié Butts, Ph.D.
Biogen, Inc.



Victoria McGovern, Ph.D.
Burroughs Wellcome Fund



ABRCMS Supporters

Major Conference Sponsors



Diamond Sponsors

- University of Michigan, Medical School Office of Graduate & Postdoctoral Studies
- UCLA Graduate Programs in Bioscience

Platinum Sponsors

- University of Alabama at Birmingham
- Wayne State University
- Johns Hopkins University, Bloomberg School of Public Health and School of Nursing
- Eli Lilly & Company

Gold Sponsors

- University of San Francisco PhD Programs in College of Engineering
- UMass Chan Medical School

Silver Sponsors

- Howard Hughes Medical Institute (HHMI)
- Medical College of Wisconsin
- Genentech
- University of Minnesota Medical Scientist Training Program (MD/PhD)
- Philadelphia College of Osteopathic Medicine (PCOM)
- Washington University in St. Louis, Vagelos Division of Biology & Biomedical Sciences
- Emory University, Laney Graduate School

Bronze Sponsors

- Uniformed Services University of the Health Sciences - Graduate Programs in Biomedical Sciences and Public Health

20th Anniversary Highlights

Celebrating 20 years of ABRCMS

For more than 20 years, ABRCMS has been the go-to conference for underrepresented groups in STEM – providing a safe space for learning, sharing and connecting with one another.

While ABRCMS officially hit its 20th year in 2021, there's no better time to celebrate with our community than now and in-person, as we rebuild and reenergize after the last two years.

We are so glad to have you all here and hope that you enjoy the celebration we have in store!

ABRCMS Graduate Symposium

ABRCMS is excited to launch the inaugural ABRCMS Graduate Symposium this year, taking place November 8-9. The Graduate Symposium is designed for graduate students, in one of our 12 STEM disciplines, at the master's and doctoral-level, and provides a unique opportunity for graduate students to highlight their research in oral presentations, strengthen their professional development skills, and build their scientific networks among STEM and career professionals.

Welcome to the graduate students who are part of this groundbreaking ABRCMS event!

ePosters

Check out the student ePoster virtual session, which will be available to all attendees on Saturday, November 12, from 9:30 a.m. – 11:30 a.m., via the conference app.

ABRCMS365

Your ABRCMS experience no longer has to end on the last day of the conference. ABRCMS365 is an extension of the conference that allows you and your students to continue learning, with webinars that explore professional development, diversity, and scientific topics. Take advantage of this opportunity to stay connected by visiting: abrcms.org/online.



ABRCMS GRADUATE SYMPOSIUM PROGRAM

Tuesday, November 8

8:00 a.m. - 8:55 a.m.

📍 Elite Ballroom 1

HEADSHOT LOUNGE OPEN

Noon - 12:15 p.m.

📍 Platinum Ballroom 6

WELCOME & OVERVIEW

(Recommended for All Attendees)

SPEAKERS

- Irene Hulede, American Society for Microbiology, Washington, DC
- Tiffani Fonseca, M.B.A., American Society for Microbiology, Washington, DC

9:50 a.m. - 10:50 a.m.

📍 Platinum Ballroom 6

Graduate Student Coaching: A Proactive Approach to Career Success

(All Attendees)

SPEAKER

- Marquita Qualls, Entropia Consulting, Nashville, TN

10:50 a.m. - 11:00 a.m.

BREAK & HEADSHOT LOUNGE OPEN

11:00 a.m. - 12:30 p.m.

📍 Platinum Ballroom 6

Navigating Career Choices

(All Attendees)

SPEAKER

- Lauren Celano, Propel Careers, Boston MA

12:30 p.m. - 1:45 p.m.

📍 Platinum Ballroom 5

NETWORKING LUNCH & HEADSHOT LOUNGE OPEN

CONCURRENT ORAL PRESENTATIONS (4 SESSION OPTIONS)

2:00 p.m. - 3:15 p.m.

📍 Platinum Ballroom 3-4

SESSION 1

Graduate Student Oral Presentations

Biochemistry and Molecular Biology; Cell Biology

(All Attendees)

PRESENTERS

- 2:00 - 2:10 p.m. GS01: Lupe Aguirre-Figueroa
- 2:13 - 2:23 p.m. GS02: Chelsea Blankenchip
- 2:26 - 2:36 p.m. GS03: Madison Kennedy
- 2:39 - 2:49 p.m. GS04: Alexander Paredes
- 2:52 - 3:02 p.m. GS05: Amy Aponte
- 3:05 - 3:15 p.m. GS06: Gerson Ascencio

2:00 p.m. - 3:15 p.m.

📍 Platinum Ballroom 7-8

SESSION 2

Graduate Student Oral Presentations

Neuroscience; Social and Behavioral Sciences and Public Health

(All Attendees)

PRESENTERS

- 2:00 - 2:10 p.m. GS07: Simone Grant
- 2:13 - 2:23 p.m. GS08: Micah Johnson
- 2:26 - 2:36 p.m. GS09: Elizabeth Medina
- 2:39 - 2:49 p.m. GS10: Daraishka Perez
- 2:52 - 3:02 p.m. GS11: Motomori Lewis
- 3:05 - 3:15 p.m. GS12: Marisa Torres-Ruiz

2:00 p.m. - 3:15 p.m.

📍 Platinum Ballroom 9-10

SESSION 3

Graduate Student Oral Presentations

Cancer Biology, Developmental Biology and Genetics; Microbiology

(All Attendees)

PRESENTERS

- 2:00 - 2:10 p.m. GS13: Mary Fuentes
- 2:13 - 2:23 p.m. GS14: Haroldo Rodrigues Chevez
- 2:26 - 2:36 p.m. GS15: Oscar Villarreal
- 2:39 - 2:49 p.m. GS16: Megan Goeckel
- 2:52 - 3:02 p.m. GS17: Kelton Verble
- 3:05 - 3:15 p.m. GS18: Latoyia Downs

2:00 p.m. - 3:15 p.m.

📍 Platinum Ballroom 6

Session 4

Graduate Student Oral Presentations

Microbiology; Immunology

(All Attendees)

PRESENTERS

- 2:00 - 2:10 p.m. GS19: Charles Agbavor
- 2:13 - 2:23 p.m. GS20: Erika Flores
- 2:26 - 2:36 p.m. GS21: Franklin Román-Rodríguez
- 2:39 - 2:49 p.m. GS22: Jessica Watts
- 2:52 - 3:02 p.m. GS23: Erik Guillen
- 3:05 - 3:15 p.m. GS24: Chelsey Skeete

3:25 p.m. - 4:10 p.m.

📍 Platinum Ballroom 6

LinkedIn, Resumes, Interviews, Oh my!: Developing Effective Job Search Strategies to Boost Your Career

(All Attendees)

SPEAKERS

- Gian Carlo Molina-Castro, The Johns Hopkins University, Baltimore, MD
- Roshni Rao, Ph.D., The Johns Hopkins University, Baltimore, MD

4:10 p.m. 4:15 p.m.

REFRESHMENT BREAK

LED BY KNOWLEDGE,

GUIDED BY HEART



emory.edu



EMORY
UNIVERSITY

CONCURRENT PROFESSIONAL DEVELOPMENT SESSIONS (2 SESSION OPTIONS)

4:15 p.m. - 5:00 p.m. 📍 Platinum Ballroom 3-4
When You Have to Be the Best: Navigating Career Transitions
(All Attendees)

SPEAKER

- **Shanique Edwards, Ph.D.**, Cold Spring Harbor Laboratory, Cold Spring Harbor, NY

4:15 p.m. - 5:00 p.m. 📍 Platinum Ballroom 7-8
Finding Success as a Postdoc
(All Attendees)

SPEAKERS

- **Heather Dillon, MSc.**, University of California, San Diego, La Jolla, CA
- **Mark Lawson, Ph.D.**, University of California, Berkeley, CA
- **Jennie Salomon, MSSW**, University of California, San Diego, La Jolla, CA

5:15 p.m. - 6:00 p.m. 📍 Platinum Ballroom 6
Navigating the Impact of Microaggressions
(All Attendees)

SPEAKERS

- **Jacqueline McDermott-Selman, M.Ed., M.S., LADC**, Sharing Abilities Counseling LLC, Windsor, CT
- **Danielle Watt, Ph.D.**, University of Minnesota, Minneapolis, MN

6:15 p.m. - 7:30 p.m. 📍 Platinum Patio
GRADUATE STUDENT NETWORKING RECEPTION

6:00 p.m. - 7:30 p.m. 📍 Elite Ballroom 1
HEADSHOT LOUNGE OPEN

Wednesday, November 9

8:00 a.m. - 8:55 a.m. 📍 Elite Ballroom 1
HEADSHOT LOUNGE OPEN

9:00 a.m. - 9:45 a.m. 📍 Platinum Ballroom 6
Enacting Change Through Cultivation of Graduate Student Activism and Engagement with Social Justice
(All Attendees)

SPEAKER

- **D'Anne Duncan, Ph.D.**, University of California, San Francisco, San Francisco, CA

9:45 a.m. - 10:00 a.m.
Break

CONCURRENT ORAL PRESENTATIONS (4 SESSION OPTIONS)

10:00 a.m. - 11:15 a.m. 📍 Platinum Ballroom 6
SESSION 1

Graduate Student Oral Presentations
Biochemistry and Molecular Biology; Physiology and Pharmacology; Chemistry
(All Attendees)

PRESENTERS

- 10:00 – 10:10 a.m. **GS25:** Kevin Ramos
- 10:13 – 10:23 a.m. **GS26:** Tavis Reed
- 10:26 – 10:36 a.m. **GS27:** Alejandra Matsuri Rojano-Nisimura
- 10:39 – 10:49 a.m. **GS28:** Ivana Daniels
- 10:52 – 11:02 a.m. **GS29:** Kennedy Goldsborough
- 11:05 – 11:15 a.m. **GS30:** Michael Gonzalez

10:00 a.m. - 11:15 a.m. 📍 Platinum Ballroom 3-4
SESSION 2

Graduate Student Oral Presentations
Microbiology; Immunology
(All Attendees)

PRESENTERS

- 10:00 – 10:10 a.m. **GS31:** Francisco Acosta
- 10:13 – 10:23 a.m. **GS32:** Rachana Pandit
- 10:26 – 10:36 a.m. **GS33:** Eva Quijano Cardé
- 10:39 – 10:49 a.m. **GS34:** Lamar Thomas
- 10:52 – 11:02 a.m. **GS35:** Evonne Jean
- 11:05 – 11:15 a.m. **GS36:** Carmelissa Norbrun

10:00 a.m. - 11:15 a.m. 📍 Platinum Ballroom 7-8
SESSION 3

Graduate Student Oral Presentations
Neuroscience, Social & Behavioral Sciences and Public Health
(All Attendees)

PRESENTERS

- 10:00 – 10:10 a.m. **GS37:** Mydirah Littlepage-Saunders
- 10:13 – 10:23 a.m. **GS38:** Ginny Park
- 10:26 – 10:36 a.m. **GS39:** Krislen Tison
- 10:39 – 10:49 a.m. **GS40:** Marcy Cage
- 10:52 – 11:02 a.m. **GS41:** Leah Dodds
- 11:05 – 11:15 a.m. **GS42:** Alma Solis

10:00 a.m. - 11:15 a.m. 📍 Platinum Ballroom 9-10
SESSION 4

Graduate Student Oral Presentations
Engineering, Physics, and Mathematics; Computational and Systems Biology, and Microbiology
(All Attendees)

PRESENTERS

- 10:00 – 10:10 a.m. **GS43:** Preye Agbana
- 10:13 – 10:23 a.m. **GS44:** Kharimat Lora Alatis
- 10:26 – 10:36 a.m. **GS45:** Mariela Rivera-De Jesus
- 10:39 – 10:49 a.m. **GS46:** Tiffany Eulalio
- 10:52 – 11:02 a.m. **GS47:** Steven Ewell
- 11:05 – 11:15 a.m. **GS48:** Marienela Heredia

11:25 a.m. - 12:10 p.m.

NETWORKING LUNCH & HEADSHOT LOUNGE OPEN

CONCURRENT PROFESSIONAL DEVELOPMENT SESSIONS (2 SESSION OPTIONS)

12:15 p.m. - 1:15 p.m.

📍 **Platinum Ballroom 3-4**

Ageing Time Management, from Surviving to Thriving

(All Attendees)

SPEAKER

- **Weimei Xu, Ph.D.**, Tulane University, New Orleans, LA

12:15 p.m. - 1:15 p.m.

📍 **Platinum Ballroom 7-8**

Career Exploration

(All Attendees)

SPEAKER

- **J. Alan Goggins, Ph.D.**, Merck Research Laboratories, San Francisco, CA

1:20 p.m. - 1:50 p.m.

📍 **Platinum Ballroom 6**

OPEN FORUM

(All Attendees)

ABRCMS Graduate Student Oral Presentations

Tuesday, November 8, 2022

SESSION 1: GRADUATE STUDENT ORAL PRESENTATIONS

2:00 p.m. - 2:10 p.m.

GS01: Lupe Aguirre-Figueroa

University of Wisconsin-Madison

Abstract Title: Synthetic quorum sensing inhibitors to block polymicrobial infections

2:13 p.m. - 2:23 p.m.

GS02: Chelsea Blankenchip

University of California San Diego

Abstract Title: Control of Bacterial Immune Signaling by a WYL Domain Transcription Factor

2:26 p.m. - 2:36 p.m.

GS03: Madison Kennedy

Fred Hutchinson Cancer Center

Abstract Title: Structures and Function of the Type-IIS Restriction Endonuclease PaqCI

2:39 p.m. - 2:49 p.m.

GS04: Alexander Paredes

University of Maryland Baltimore County

Abstract Title: Biophysical characterization of the BqsR response regulator from the *Pseudomonas aeruginosa* BqsR/S two-component system

2:52 p.m. - 3:02 p.m.

GS05: Amy Aponte

University of North Carolina at Chapel Hill

Abstract Title: Regulation of the retinoblastoma (Rb) tumor suppressor by the ubiquitin-proteasome system

3:05 p.m. - 3:15 p.m.

GS06: Gerson Ascencio

San Francisco State University

Abstract Title: Role of miR-190 on Cell Fate Determination During Mitosis in Drosophila Neuroblasts

SESSION 2: GRADUATE STUDENT ORAL PRESENTATIONS

2:00 p.m. - 2:10 p.m.

GS07: Simone Grant

University of California Davis

Abstract Title: The Effects of Immune Stimulant Intensity on Neurodevelopment in a Rat Model of Maternal Immune Activation

2:13 p.m. - 2:23 p.m.

GS08: Micah Johnson

University of Iowa

Abstract Title: Brain-wide Local Field Potential Connectivity Patterns Underlying a Migraine-related Hypersensitivity Network

2:26 p.m. - 2:36 p.m.

GS09: Elizabeth Medina

Washington State University

Abstract Title: Sleep on the Spectrum

2:39 p.m. - 2:49 p.m.

GS10: Daraishka Perez

Universidad Central del Caribe

Abstract Title: Targeted lysophospholipid delivery via the transferrin receptor as potential epilepsy therapy

2:52 p.m. - 3:02 p.m.

GS11: Motomori Lewis

University of Florida

Abstract Title: Geographic Variation of High-Risk Prescription Opioid Use Measures among Disabled Medicare Beneficiaries, 2011-2018

3:05 p.m. - 3:15 p.m.

GS12: Marisa Torres-Ruiz

San Diego State University

Abstract Title: Social Determinants of Mental Health Outcomes

SESSION 3: GRADUATE STUDENT ORAL PRESENTATIONS

2:00 p.m. - 2:10 p.m.

GS13: Mary Fuentes

The University of Texas MD Anderson Cancer Center, UT Health Houston Graduate School of Biomedical Sciences

Abstract Title: Histone Lysine Methyltransferase NSD3 Governs Transcriptional Programs that Drive Pancreatic Neuroendocrine Tumors (PanNETs)

2:13 p.m. - 2:23 p.m.

GS14: Haroldo Rodriguez Chevez

University of Washington

Abstract Title: Characterization of Tumor-infiltrating B Cell Responses in Merkel Cell Carcinoma

2:26 p.m. - 2:36 p.m.

GS15: Oscar Villarreal

The University of Texas MD Anderson Cancer Center

Abstract Title: The Role of Tumor-Propagating Cells in the Response of Colorectal Cancer to MAPK-Targeting Therapy

2:39 p.m. - 2:49 p.m.

GS16: Megan Goeckel

Washington University in St. Louis

Abstract Title: Inhibition of TRPM5 Leads to Developmental and Cardiovascular Abnormalities

2:52 p.m. - 3:02 p.m.

GS17: Kelton Verble

University of Alabama

Abstract Title: A Rapid Return to Normal: Temporal Patterns of Gene Expression Following Cold Stress in the Bumble Bee *Bombus impatiens*

3:05 p.m. - 3:15 p.m.

GS18: Latoyia Downs

University of Southern Mississippi

Abstract Title: Deciphering the interplay between selenoproteins and the unfolded protein response in pathogen infection using anlxodes scapulariscell line

SESSION 4: GRADUATE STUDENT ORAL PRESENTATIONS

2:00 p.m. - 2:10 p.m.

GS19: Charles Agbavor

University of Pittsburgh

Abstract Title: Disarming Bad Bugs: Targeting the Pneumolysin Toxin in *Streptococcus pneumoniae*

2:13 p.m. - 2:23 p.m.

GS20: Erika Flores

University of Texas Health Science Center

Abstract Title: Investigating the role of chronic intestinal inflammation during adherent-invasive *E. coli* infections in a larval zebrafish model

2:26 p.m. - 2:36 p.m.

GS21: Franklin Román-Rodríguez

Rutgers University

Abstract Title: Examining Altered Regulatory Pathways in *Staphylococcus aureus* Influenced by *Pseudomonas aeruginosa* Secreted Compounds

2:39 p.m. - 2:49 p.m.

GS22: Jessica Watts

Baylor College of Medicine

Abstract Title: Generating Elephant Cell Lines Targeted in Elephant Endotheliotropic Herpesvirus Infection

2:52 p.m. - 3:02 p.m.

GS23: Erik Guillen

Albert Einstein College of Medicine

Abstract Title: The strength of antigenic and IL-2 signals epigenetically programs functional memory CD8+ T cells

3:05 p.m. - 3:15 p.m.

GS24: Chelsey Skeete

Boston University Graduate Medical Sciences

Abstract Title: Investigating the Role of Opioid Signaling on Innate Immune Activation in HIV-infected Microglia

Wednesday, November 9, 2022

SESSION 1: GRADUATE STUDENT ORAL PRESENTATIONS

10:00 a.m. - 10:10 a.m.

GS25: Kevin Ramos

Albert Einstein College of Medicine

Abstract Title: Using a Computational-Based Approach to Enhance the Binding Characteristics of a Nanobody

10:13 a.m. - 10:23 a.m.

GS26: Tavis Reed

Princeton University

Abstract Title: Tapioca - A Novel Framework For Predicting Protein-Protein Interactions From Thermal Proximity Coaggregation Data Identifies NUCKS1 as a Pan-Herpesvirus Proviral Factor

10:26 a.m. - 10:36 a.m.

GS27: Alejandra Matsuri Rojano-Nisimura

The University of Texas at Austin

Abstract Title: Uncovering novel RNA chaperones in *E. coli*

10:39 a.m. - 10:49 a.m.

GS28: Ivana Daniels

Indiana University School of Medicine

Abstract Title: The Effects of pH Alteration on Respiratory Syncytial Virus Infection in Human Airway Epithelial Cells

10:52 a.m. - 11:02 a.m.

GS29: Kennedy Goldsborough

Virginia Commonwealth University

Abstract Title: Behavioral Battery for Candidate Analgesics to Treat Sickle Cell Disease Chronic Pain: Effects of Oxycodone

11:05 a.m. - 11:15 a.m.

GS30: Michael Gonzalez

California State University, Fullerton

Abstract Title: A Polypharmacology Approach: Development of Multi-Target Inhibitors for the Treatment of Chronic Pain and Alzheimer's Disease

SESSION 2: GRADUATE STUDENT ORAL PRESENTATIONS

10:00 a.m. - 10:10 a.m.

GS31: Francisco Acosta

California State University Long Beach

Abstract Title: Characterizing the Interaction Between HIV-1 Nef and the Host Factor Annexin A2

10:13 a.m. - 10:23 a.m.

GS32: Rachana Pandit

Alabama State University

Abstract Title: Impact of Coronavirus Infection on Biogenesis and Trafficking of the Cell Derived-Extracellular Vesicles

10:26 a.m. - 10:36 a.m.

GS33: Eva Quijano Cardé

University of California - Davis

Abstract Title: Design and Validation of a qPCR Assay for Diagnosis of Acipenserid Herpesvirus 2 in White Sturgeon (Acipenser transmontanus) Tissues

10:39 a.m. - 10:49 a.m.

GS34: Lamar Thomas

Binghamton University

Abstract Title: The Characterization of a Novel GBS Protein Involved in Vaginal Colonization

10:52 a.m. - 11:02 a.m.

GS35: Evonne Jean

University of Pennsylvania

Abstract Title: Cutaneous Resistance to Helminth Infection Relies Upon an IL-33-dependent, but STAT6 Independent Mechanism

11:05 a.m. - 11:15 a.m.

GS36: Carmelissa Norbrun

Brown University

Abstract Title: Chitinase 3-like-1 Contributes to the Development of Pulmonary Vascular Remodeling in Pulmonary Hypertension

SESSION 3: GRADUATE STUDENT ORAL PRESENTATIONS

10:00 a.m. - 10:10 a.m.

GS37: Mydirah Littlepage-Saunders

Uniformed Services University of Health Sciences

Abstract Title: Metabotropic glutamate receptor 2 deletion effects on behavioral flexibility in mice

10:13 a.m. - 10:23 a.m.

GS38: Ginny Park

Washington State University

Abstract Title: Identifying Behavioral Predictors of Cannabis Vapor Self-Administration in Female and Male Rats

10:26 a.m. - 10:36 a.m.

GS39: Krislen Tison

University of Iowa

Abstract Title: Transcriptomic Analysis of The Cerebellum in The 16p11.2 Duplication Mouse Model Of Schizophrenia

10:39 a.m. - 10:49 a.m.

GS40: Marcy Cage

University of South Alabama College of Medicine

Abstract Title: Association of leisure-time physical activity with chronic kidney disease(CKD) among African-Americans in Jackson Heart Study

10:52 a.m. - 11:02 a.m.

GS41: Leah Dodds

University of Miami Miller School of Medicine

Abstract Title: Associations Between Hypertensive Disorders of Pregnancy and Cognitive Decline, the Study of Latinos of Latinos-Investigation of Neurocognitive Aging

11:05 a.m. - 11:15 a.m.

GS42: Alma Solis

Duke University

Abstract Title: Blastocystis sp. infection in relation to animal interaction, socio-demographic variables, and household characteristics in northeast Madagascar

SESSION 4: GRADUATE STUDENT ORAL PRESENTATIONS

10:00 a.m. - 10:10 a.m.

GS43: Preye Agbana

University of Kentucky

Abstract Title: Ternary Polypeptide Nanoparticles with Improved Encapsulation, Sustained Release, and Enhanced In Vitro Efficacy of Carfilzomib

10:13 a.m. - 10:23 a.m.

GS44: Kharimat Lora Alatise

Clemson University

Abstract Title: Toward a targeted fusogenic peptide for gene regulation in ovarian cancer

10:26 a.m. - 10:36 a.m.

GS45: Mariela Rivera-De Jesús

Cornell University

Abstract Title: Delivery of SARS-CoV-2 Nucleocapsid Protein Antigens Using Recombinant Outer Membrane Vesicles

10:39 a.m. - 10:49 a.m.

GS46: Tiffany Eulalio

Stanford University

Abstract Title: Quantifying Regional DNA Methylation Improves Detection of Biologically Relevant Associations in Alzheimer's Disease

10:52 a.m. - 11:02 a.m.

GS47: Steven Ewell

Florida Agricultural and Mechanical University

Abstract Title: In Silico Identification of 1,3,4-Oxadiazole Hybrids as novel Discoidin Domain Receptor-1 (DDR-1) Inhibitors with Potential Anticancer Agent

11:05 a.m. - 11:15 a.m.

GS48: Marienela Heredia

University of Wisconsin-Madison

Abstract Title: Modeling Intestinal Protozoan-Host Interactions In Vivo Using a Murine Entamoeba species

Innovation
depends on
diversity.



UMass Chan
MEDICAL SCHOOL



Get Connected,
Stay Connected

ABRCMS365 is year-round, online programming that provides continued learning, with unparalleled professional development, scientific and networking opportunities.

Explore Content Designed For:

- Community College, Undergraduate and Postbaccalaureate Students
- Graduate Students and Postdoctoral Scientists
- Researchers, Faculty Members and Administrators, including those working in Diversity and Inclusion

Mark your calendar for our upcoming events at www.abrcms.org/abrcmsonline

Schedule at a Glance

WEDNESDAY, NOVEMBER 9

9:00 a.m. - 1:50 p.m.
12:00 p.m. - 8:00 p.m.
2:00 p.m. - 4:00 p.m.
4:15 p.m. - 5:00 p.m.
5:15 p.m. - 6:00 p.m.
6:30 p.m. - 7:15 p.m.
7:30 p.m. - 9:00 p.m.

ABRCMS Graduate Symposium
Registration
Concurrent Workshops
Networking Opportunities in STEM Disciplines Discussion
Concurrent Professional Development Sessions
Networking Dinner
Networking Affiliated Events

THURSDAY, NOVEMBER 10

7:00 a.m. - 7:00 p.m.
7:30 a.m. - 8:15 a.m.
8:30 a.m. - 9:30 a.m.
9:45 a.m. - 10:15 a.m.
10:30 a.m. - 11:15 a.m.
11:25 a.m. - 11:55 a.m.
12:15 p.m. - 1:00 p.m.
1:10 p.m. - 1:55 p.m.
2:10 p.m. - 5:40 p.m.
2:10 p.m. - 3:10 p.m.
3:25 p.m. - 4:25 p.m.
4:40 p.m. - 5:40 p.m.
6:00 p.m. - 7:15 p.m.
7:15 p.m. - 8:00 p.m.
8:00 p.m. - 9:30 p.m.

Registration
Continental Breakfast
Welcome and Opening Keynote
Concurrent Scientific Expert Lecture Sessions
Concurrent Professional Development Sessions
Concurrent Scientific Expert Lecture Sessions
Networking Lunch
Keynote Address
Exhibit and Poster Hall Hours
Poster Session 1 (A)
Poster Session 2 (B)
Poster Session 3 (C)
Student Oral Presentations 1
Networking Lunch
Concurrent Professional
Development Sessions and Networking Events

FRIDAY, NOVEMBER 11

7:00 a.m. - 7:00 p.m.
7:30 a.m. - 8:15 a.m.
8:30 a.m. - 9:15 a.m.
9:30 a.m. - 10:00 a.m.
10:15 a.m. - 11:00 a.m.
11:15 a.m. - 12:00 p.m.
12:15 p.m. - 1:00 p.m.
1:15 p.m. - 4:35 p.m.
1:15 p.m. - 2:15 p.m.
2:25 p.m. - 3:25 p.m.
3:35 p.m. - 4:35 p.m.
4:45 p.m. - 5:30 p.m.
5:45 p.m. - 7:00 p.m.
7:15 p.m. - 9:30 p.m.

Registration
Continental Breakfast
Concurrent Professional Development Sessions
Concurrent Scientific Expert Lecture Sessions
Keynote Address
Concurrent Professional Development Sessions
Networking Lunch
Exhibit and Poster Hall Hours
Poster Session 4 (D)
Poster Session 5 (E)
Poster Session 6 (F)
Keynote Address
Student Oral Presentations 2
20th Anniversary Celebration

SATURDAY, NOVEMBER 12

7:00 a.m. - 1:00 p.m.
8:00 a.m. - 9:00 a.m.
9:30 a.m. - 11:30 a.m.
9:30 a.m. - 10:30 a.m.
10:30 a.m. - 11:30 a.m.
5:00 p.m. - 5:30 p.m.
5:30 p.m. - 7:30 p.m.
7:45 p.m. - 8:45 p.m.

Registration
Continental Breakfast
Exhibit Hall Hours
ePoster Session 7 (G)
ePoster Session 8 (H)
Closing Keynote
Awards Ceremony and Recognition
Closing Dinner

General Conference Information

The ABRCMS Final Program is current as of October 24, 2022. For the latest updates and information, please refer to the mobile app.

REGISTRATION

ABRCMS registration is located at the Anaheim Convention Center. Full-service registration for all attendees, including badge pick-up is in Lobby B.

Wednesday, November 9

12:00 p.m. - 8:00 p.m.

Thursday, November 10

7:00 a.m. - 7:00 p.m.

Friday, November 11

7:00 a.m. - 7:00 p.m.

Saturday, November 12

7:00 a.m. - 1:00 p.m.

CONFERENCE POLICIES

Name Badge Policy and Badge Replacement

All ABRCMS attendees are required to always wear conference badges onsite. Badges give you access to sessions, the exhibit hall, and workshops. It is your responsibility to ensure that you always have your badge. There is a charge of \$25 for badge replacement. No exceptions will be made.

Dress Code

ABRCMS attendees are expected to dress professionally for all conference activities.

Cell Phone Usage

Out of consideration for your ABRCMS colleagues, all cell phones must be silenced in session rooms.

Photos and Video

By registering for ABRCMS, you agree to allow ASM/ABRCMS to use any photos or video taken of you during the conference in news media, website, publications, articles, marketing pieces, etc. To protect data shared during presentations, no photos may be taken of posters or scientific session slides at ABRCMS.

ABRCMS Code of Conduct

The Annual Biomedical Research Conference for Minoritized Scientists ("ABRCMS"), managed by the American Society for Microbiology ("ASM"), is one of the nation's largest conferences for underrepresented scientists in STEM. ABRCMS is committed to providing an environment that encourages the free expression and exchange of scientific ideas and promotes equal opportunities and respectful treatment for all participants. All participants are expected to treat others with respect and consideration, follow venue rules, and alert ASM/ABRCMS staff or security of any dangerous situations or anyone in distress.

ABRCMS prohibits and will not tolerate any form of harassment or bullying at its events. This policy applies to all attendees, speakers, exhibitors, contractors, volunteers, and guests at ABRCMS. Violation of this code of conduct may result in the participant being asked to leave the event at which the incident occurred, without warning or refund; being barred from attending ABRCMS in the future.

If a participant experiences or witness harassment, please follow the protocol at abrcms.org/code-of-conduct or contact an ASM/ABRCMS staff (identifiable by staff badge) as soon as possible or contact security.

LOST AND FOUND

Unattended personal belongings will be removed and taken to the Registration Desk located at the Anaheim Convention Center.

ADA

Pursuant to the Americans with Disabilities Act, if you require services or aids to participate fully in ABRCMS, please visit the registration desk.

CONFERENCE APP

Get the latest program, exhibitor information, maps and more in the palm of your hand with the ABRCMS Mobile App. Search for ABRCMS 2022 in your app store or scan this QR code to download.



WI-FI ACCESS

Free Wi-Fi is available in the exhibit hall, session rooms, and convention center hallways. This service has been brought to you by ABRCMS and the American Society for Microbiology.

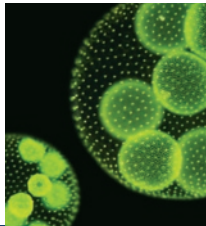
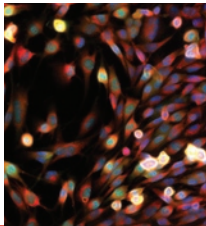
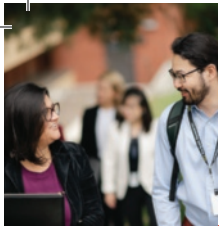
- **NETWORK:** ABRCMS
- **PASSWORD:** ABRCMS_2022

DINING PLAN

Dining is included in the ABRCMS registration fee. Registration includes the following meals:

- **Wednesday:** Dinner
- **Thursday:** Continental Breakfast, Lunch, and Dinner
- **Friday:** Continental Breakfast, Lunch and Reception
- **Saturday:** Continental Breakfast and Dinner

Note: The most common food allergens have been avoided to the best extent. Please read food labels on the buffets carefully to avoid allergens of dietary restricted foods.



Scripps Research

Be part of one of the world's leading, nonprofit biomedical research institutes. Scripps Research is ranked the most influential institution globally for its impact on scientific innovation.

We are actively seeking new researchers who embody our values of excellence, independence, creativity, diversity, respect and compassion. Together, we cultivate scientific leaders, expand the frontiers of knowledge and transform human health.

What are you seeking?

Undergraduate Research

During the summer and throughout the academic year, we offer unique mentored research experiences to undergraduates with diverse backgrounds—ranging from no prior research experience to first-generation college attendees.



Graduate Education

Ranked among the top ten programs of its kind in the nation, the Skaggs Graduate School of Chemical & Biological Sciences trains the next generation of scientists in a rich environment defined by mentorship, intellectual curiosity and high-level research output.



Postdoctoral Training

Working alongside more than 170 internationally renowned faculty, Scripps Research postdoctoral researchers enjoy expansive benefits and specialized training support on their way to becoming future leaders in the life sciences.



Scripps Research Fellows Program

Exceptional recent PhD graduates can accelerate their careers and launch an independent laboratory with the unique support and resources of our Scripps Research Fellows Program.



Junior Faculty

We invite multidisciplinary investigators to collaborate in solving the greatest problems across basic research, drug discovery and translational medicine.



@scrippsresearch | scripps.edu

General Conference Information

AWARDS CEREMONY & RECOGNITION AND CLOSING BANQUET

The Awards Ceremony & Recognition is Saturday, November 12, from 5:30 p.m. to 7:30 p.m. located in the ACC North Level 100. The Closing Banquet will immediately follow the ceremony at 7:45 p.m., located in Hall A.

DESIGNATED SPACES

Gender neutral restrooms are available in the convention center and can be found at the following locations:
 Convention Center 208-210 Corridor (Second Level)
 Exhibit Hall B (First Level)

All rooms will be available from Wednesday, November 9 through Saturday, November 12.

ADA Resource Room	205 B
Exam Room 1.....	208 B
Childcare Room.....	209 B
Exam Room 2.....	211 B
Exam Room 3.....	212 A
First Aid Room	112

General Study Room	208 B
Judges Lounge	207 ABC
Lactation Room	109
Mentoring Resource Room	211 A
Oral Presentation Practice Room	212 B
Poster Presentation Practice Room	213 ABC
Prayer/Meditation Room	202 B
Speaker Ready Room	205 A

Note: Please check your hotel for other available study rooms.

CONFERENCE EVALUATION

This year, we are re-implementing real-time evaluation during sessions. Please take a few minutes to complete your evaluation in the conference app at the end of each session you attend.

A post-conference evaluation will be emailed to all attendees following the conference. Please take some to complete the evaluation upon receipt. We value your feedback and your completed evaluation helps us improve the ABRCMS experience.

THE ABRCMS EXHIBIT HALL PASSPORT IS NOW IN THE CONFERENCE APP!

The Exhibit Hall Passport offers you the opportunity to win a **\$50 gift card** while networking and exploring the ABRCMS 2022 Exhibitors. Five randomly selected winners will be announced in Exhibit Hall B on Saturday, November 12 at 11:00 a.m. You do not need to be present to win.

Visit these participating booths to scan their QR code and collect points!

- American Society for Microbiology, **Booth 400**
- Medical College of Wisconsin, **Booth 240**
- University of Missouri, Graduate School & Life Sciences, **Booth 841**
- ETS, **Booth 574**
- Emory University, Laney Graduate School, **Booth 810**





Exhibitor and Judges Corner

For Exhibitors

ABRCMS Exhibits will take place in Hall B of the Anaheim Convention Center.

Move-In

- **Wednesday, November 9**
3:00 p.m. - 8:00 p.m.
- **Thursday, November 10**
8:00 a.m. - 12:00 p.m.

Exhibit Hours

- **Thursday, November 10**
2:10 p.m. - 5:40 p.m.
- **Friday, November 11**
1:15 p.m. - 4:35 p.m.
- **Saturday, November 12**
9:30 a.m. - 11:30 a.m.

Early Admittance

Your exhibitor badge allows you access to the Exhibit Hall 30 minutes prior to the opening of the Exhibit Hall. Due to security, you will not be allowed to enter the Exhibit Hall earlier than 30 minutes or anytime outside of exhibit hours. Please plan accordingly.

Exhibitor Service Center

The Exhibitor Service Center is where exhibitors can find the exhibitor lounge, Freeman, Smart City (Internet), Projection (A/V) and Maritz (Lead Retrieval) service desks. The Exhibitor Service Center is located at the back left corner of Hall B.

Leaving Early

We encourage all exhibitors to stay for the duration of the conference. Students are expecting full participation. Exhibitors who wish to leave early will be responsible for the shipment of their materials. Freeman will only ship materials for exhibitors on the last day of the conference.

Move-Out

Saturday, November 12
11:45 a.m. - 4:00 p.m.

Exhibitor Feedback Session

All exhibitors are invited to join Avery August, Ph.D., ABRCMS chairperson and Co-PI, and Irene Hulede, ABRCMS director and Co-PI, for breakfast on Saturday, November 12, from 8:15 a.m. - 9:15 a.m. in room 207D for a feedback session.

For Judges

ABRCMS Poster Presentations will take place in Hall C of the Anaheim Convention Center.

Judges Lounge

Convention Center, Room 207 ABC

Important Reminder:

In-person presentation scores must be submitted by 11:00 p.m. (PT), Friday, November 11.

Virtual presentation scores must be submitted by 1:00 p.m. (PT), Saturday, November 12.





KEYNOTE SPEAKERS

Thursday,
November 10
8:30 a.m. - 9:30 a.m.



Opening Keynote
See session title in conference app

Carolyn R. Bertozzi, Ph.D.,
2022 Nobel Prize in Chemistry
Stanford University
Howard Hughes Medical Institute Investigator

Thursday,
November 10
1:10 p.m. - 1:55 p.m.



Scientific Keynote Address
**Academic Creativity, Strategic Alliances and
Diplomacy to Catalyze the Vaccine Sciences in
Tropical Medicine**

Maria Elena Bottazzi, Ph.D., FASTMH
Baylor College of Medicine, Baylor University
Waco, TX

Friday,
November 11
10:15 a.m. - 11:00 a.m.



Scientific Keynote Address
**Addressing Health Equity through Health Literacy:
The Powerful Role of Hip Hop**

Olajide Williams, M.D., M.S.
Columbia University Medical Center,
Founder and President, Hip Hop Public Health
New York, NY

Friday,
November 11
4:45 p.m. - 5:30 p.m.



Scientific Keynote Address
**STEM: The Importance of Science, Technology,
Engineering & Math**

Mae Jemison, M.D.
100 Year Starship (100YSS), The Jemison Group,
Inc., Former NASA Astronaut

Saturday
November 12
5:00 p.m. - 5:30 p.m.



Closing Keynote
Conversations with ABRCMS Alumni: Where Are They Now?

ABRCMS Alumni Panelists

- **Patricia Salgado Pirbhoy, Ph.D.**, University of California, Irvine, Irvine, CA
- **Kennita Johnson, Ph.D.**, University of North Carolina, Chapel Hill, NC
- **Robert Drummond, M.D., Ph.D.**, Montebello & DTLA Urgent Care, Montebello, CA





CONCURRENT SCIENTIFIC SPEAKERS

Thursday, November 10 | 9:45 a.m. - 10:15 a.m



NAD+ Flux and Resiliency in Aged Mice

Melanie R. McReynolds, Ph.D.,
The Pennsylvania State University,
University Park, PA



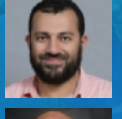
Microfabrication Approaches to Control Stem Cell Fate and Function

Quinton Smith, Ph.D., University
of California, Irvine, Irvine, CA



Cancer Prevention by Caffeine: Another Reason to Love Coffee

Masaoki Kawasumi, M.D., Ph.D.,
University of Washington, Seattle,
WA



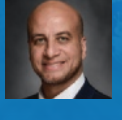
The Novel Coronavirus (SARS-CoV-2), Monkeypox Virus, and Our Immune System

Hossam Ashour, Ph.D., B. Pharm
(Hon.), University of South Florida,
St. Petersburg, FL



The Eye: The Organ with the Stickiest Vasculature in Diabetes

Emma M. Lessieur-Contreras,
M.D., Ph.D., University of
California, Irvine, Irvine, CA



Hatem Elshabrawy, Ph.D., Sam
Houston State University, Conroe, TX



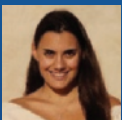
Interdisciplinary Approach to Control Biofilm Formation Using Natural Extracts and Biocompatible Polymers

Victoria V. Volkis, Ph.D.,
University of Maryland Eastern
Shore, Princess Anne, MD



Intoxicated! Discovery of New Bacterial Toxins Reveals Novel Biochemical Pathways

Aria Eshraghi, Ph.D., University
of Florida, Gainesville, FL



How to Identify True Gene Orthologs Across Species

Constantina Theofanopoulou,
Ph.D., Hunter College (CUNY)/
Rockefeller University, New York,
NY



The Intersection of Toxicology and Metabolic Syndrome

José E. Manautou, Ph.D.,
University of Connecticut, Storrs,
CT



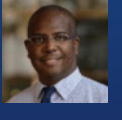
Understanding Genetic Variation: Answers from African Ancestry

Melissa Davis, Ph.D., Weill
Cornell Medicine, New York, NY



Diversify the Approach: New Techniques to Increase Diversity in Clinical Trials

Taylour Treadwell, Eli Lilly and
Company, Indianapolis, IN



Neil Hanchard, M.D., Ph.D.,
National Institutes of Health,
Bethesda, MD



CONCURRENT SCIENTIFIC SPEAKERS

Thursday, November 10 | 11:25 a.m. – 11:55 a.m.



Exploiting Iron Metabolism for Colorectal Cancer Treatment

Xiang Xue, Ph.D., University of New Mexico, Albuquerque, New Mexico



Lipid-based Nucleic Acid Delivery for Extrahepatic Tissues

Debadyuti Ghosh, Ph.D., The University of Texas at Austin, Austin, TX



Interdisciplinary Science will Unravel Cancer's Complexities

Kian Kani, Ph.D., The Lawrence J. Ellison Institute for Transformative Medicine, Los Angeles, CA



Rhythms and Blues - Infections on the Clock

John Brooks, Ph.D., Princeton University, Princeton, NJ



The MICOS Complex is Important for Heart Aging and Heart Failure

Antentor Hinton, Ph.D., Vanderbilt University, Nashville, TN



Can Biology Reduce Society's Greenhouse Gas Footprint?

Timothy Donohue, Ph.D., University of Wisconsin-Madison, Madison, WI



Investigating and Manipulating Life via Photoactive Chemical Tools

Jonathan Tyson, Ph.D., Stanford University, Stanford, CA



Sex-specific Regulation of Dopamine Release Dynamics Underlying Substance Use Disorder

Lillian J. Brady, Ph.D., Vanderbilt University, Nashville, TN



Creating a Disease Model and Curing Diabetes: Challenges, Successes, Paradigms, and Next Steps

Senta Georgia, Ph.D., Children's Hospital Los Angeles, Los Angeles, CA



Physiology of Obesity-Related Metabolic Disease: Our Time's True Epidemic

Emilyn Alejandro, Ph.D., University of Minnesota, Minneapolis, MN



Xavier Revelo, Ph.D., University of Minnesota, Minneapolis, MN

Learn more about

IDEAA



ASM is committed to exemplifying inclusive diversity with equity, access and accountability (IDEAA) in the microbial sciences.

Visit ASM's IDEAA webpage and learn more!



AMERICAN
SOCIETY FOR
MICROBIOLOGY



CONCURRENT SCIENTIFIC SPEAKERS

Friday, November 11 | 9:30 a.m. – 10:00 a.m.



The Mechanism of a Phage Derived Protein Antibiotic

Bil Clemons, Ph.D., Caltech, Pasadena, CA



Sex-specific in vitro Models of Aortic Valve Stenosis

Brian Aguado, Ph.D., University of California, San Diego, San Diego, CA



Pediatric Cancers and Health Care Disparities

Claudia A. Benavente, Ph.D., University of California, Irvine, CA



Inflammasome is Amazon Prime for Immune Response

Reginald McNulty, Ph.D., University of California, Irvine, Irvine, CA



Nicholas Pannunzio, Ph.D., University of California, Irvine, CA



Overcoming Barriers in both STEM and ER Protein Quality Control

Sonya Neal, Ph.D., University of California, San Diego, San Diego, CA



Impacts of Climate Change on Planetary and Human Health

Gwen Collman, Ph.D., National Institute of Environmental Health Sciences, Durham, NC



Elizabeth Stulberg, Ph.D., Lewis-Burke Associates, Washington, DC



The Current State of Monkeypox in America

Robert Drummond, M.D., Ph.D., Montebello & DTLA Urgent Care, Montebello, CA



Vapes, Cigarettes, and Joints: Uncovering the Neurobiological Mechanisms of Nicotine and Cannabis Use

Christie D. Fowler, Ph.D., University of California, Irvine, Irvine, CA



Non-coding RNAs in infectious disease: A paradigm shift for therapeutic targets?

Olanrewaju Morenikeji, Ph.D., University of Pittsburgh, Pittsburgh, PA



Using Computational Pharmacology and Toxicology Methods to help Create Safe Cosmetic Products

Corie Ellison, Ph.D., Procter & Gamble



The All of Us Research Program: Powering Diverse and Cutting-Edge Research Through Diverse Datasets

Karriem S. Watson, D.HSc., M.S., M.P.H., National Institutes of Health, Bethesda, MD

DAILY PROGRAM

THIS SCHEDULE IS SUBJECT TO CHANGE.

REPEAT SESSIONS ARE DENOTED BY ★

Wednesday, November 9

12:00 p.m. - 8:00 p.m.

REGISTRATION OPEN

WORKSHOPS (6 WORKSHOP OPTIONS)

2:00 p.m. - 4:00 p.m.

📍 Ballroom A

WORKSHOP 1

Mental Health and Wellness in STEM: A Community Discussion

(Recommended for Community College, Undergraduate, Postbaccalaureate and Graduate Students)

SPEAKERS

- **Mallory Rice, Ph.D.**, California State University, San Marcos, San Marcos, CA
- **Erica Sanchez, Ph.D.**, San Francisco State University, San Francisco, CA

2:00 p.m. - 4:00 p.m.

📍 303 AB

WORKSHOP 2

Post Baccalaureate Programs, Tips for Submitting a Successful Application, and Advice on Taking a Gap Year

(Recommended for Community College, Undergraduate, and Postbaccalaureate Students)

MODERATOR

- **Megan Williams, Ph.D.**, Vanderbilt University, Nashville, TN

SPEAKERS

- **Nicquet Blake, Ph.D.**, University of California, San Francisco, CA
- **Lawrence Brass, M.D., Ph.D.**, University of Pennsylvania, Philadelphia, PA
- **Tameka Clemons, Ph.D.**, Spelman College, Atlanta, GA
- **Darryl Murray, Ph.D.**, National Institutes of Health, OITE, Bethesda, MD
- **Nancy B. Schwartz, Ph.D.**, University of Chicago, Chicago, IL
- **Kimberly Williams, Ph.D.**, Spelman College, Atlanta, GA
- **Bil Clemons, Ph.D.**, Caltech, Pasadena, CA

2:00 p.m. - 4:00 p.m.

📍 Ballroom B

WORKSHOP 3

How to Wow the Reviewers - an NIH K99 Specific Aims Workshop

(Recommended for Graduate Students and Postdoctoral Scientists)

SPEAKERS

- **Maria Carranza, Ph.D.**, National Institutes of Health/ National Institute on Aging, Bethesda, MD
- **Jamie Lahvic, Ph.D.**, National Institutes of Health/ National Institute on Aging, Bethesda, MD

2:00 p.m. - 4:00 p.m.

📍 303 CD

WORKSHOP 4

Fair Play: Conversations About Racial Bias in STEMM

(Recommended for Graduate Students and Postdoctoral Scientists)

SPEAKERS

- **Percy Brown, Jr., MS.Ed.**, Fair Play Project, University of Wisconsin-Madison, Madison, WI
- **Donald Dantizer, MS.Ed.**, Fair Play Project, University of Wisconsin-Madison, Madison, WI

2:00 p.m. - 4:00 p.m.

📍 304 AB

WORKSHOP 5

NSF and NIH Funding: Strategies for Faculty

(Recommended for Faculty, Program Directors, and Exhibitors)

SPEAKERS

- **Astrid C. Haugen, M.S.E.H.**, National Institute of Environmental Health Sciences, National Institutes of Health, Research Triangle Park, NC
- **Casonya M. Johnson, Ph.D.**, National Science Foundation, Alexandria, VA
- **Paul Murphy, Ph.D.**, University of Kentucky, Lexington, KY
- **Melissa Nickell, M.S.**, University of Kentucky, Lexington, KY
- **Brett Spear, Ph.D.**, University of Kentucky, Lexington, KY

2:00 p.m. - 4:00 p.m.

📍 304 CD

WORKSHOP 6

Cultivating Equitable Ecosystems in Academia, Step 1: Focus on Removing Barriers, not Fixing Individuals

(Recommended for Faculty, Program Directors, and Exhibitors)

SPEAKERS

- **Sherilyn J. Black, Ph.D.**, Duke University, Durham, NC
- **Beronda L. Montgomery, Ph.D.**, Grinnell College, Grinnell, IA

CONCURRENT NETWORKING SESSIONS (12 SESSION OPTIONS)

4:15 p.m. – 5:00 p.m.

NETWORKING OPPORTUNITIES IN STEM DISCIPLINES DISCUSSION

(Recommended for All Attendees)

Biochemistry	204 ABC
Cancer Biology	Ballroom D
Cell Biology	304 CD
Chemistry	210 AB
Computational and Systems Biology	210 CD
Developmental Biology and Genetics	Ballroom E
Engineering, Physics, and Mathematics	303 AB
Immunology	303 CD
Microbiology	Ballroom C
Neuroscience	Ballroom A
Physiology & Pharmacology	304 AB
Social & Behavioral Sciences and Public Health	Ballroom B

CONCURRENT PROFESSIONAL DEVELOPMENT SESSIONS (8 SESSION OPTIONS)

5:15 p.m. - 6:00 p.m.

303 AB

SESSION 1

Communicating Your Value

(Recommended for Community College, Undergraduate, Postbaccalaureate and Graduate Students, and Postdoctoral Scientists)

SPEAKER

- Bill Mahoney, Ph.D., University of Washington, Seattle, WA

5:15 p.m. - 6:00 p.m.

Ballroom A

SESSION 2

Be a Star! How to Create a Competitive Graduate School Application

(Recommended for Community College, Undergraduate, and Postbaccalaureate Students)

SPEAKER

- Carlos V. Grijalva, Ph.D., University of California, Los Angeles, Los Angeles, CA

5:15 p.m. - 6:00 p.m.

Ballroom B

SESSION 3

Build an Outstanding Personal Statement

(Recommended for Community College, Undergraduate, and Postbaccalaureate Students)

SPEAKERS

- Victoria Freedman, Ph.D., Albert Einstein College of Medicine, New York, NY
- Nancy B. Schwartz, Ph.D., University of Chicago, Chicago, IL

5:15 p.m. - 6:00 p.m.

Ballroom C

SESSION 4

NIH/NIGMS Research Training Opportunities: How to Choose the Right Program for You

(Recommended for Graduate Students and Postdoctoral Scientists)

SPEAKERS

- Lameese Akacem, Ph.D., National Institutes of Health/ National Institute of General Medical Sciences, Bethesda, MD
- Laurie Stepanek, Ph.D., National Institutes of Health/ National Institute of General Medical Sciences, Bethesda, MD

5:15 p.m. - 6:00 p.m.

303 CD

SESSION 5

You Got the Interview, Now What?: How to Ace Your Behavioral-based Interview

(Recommended for Graduate Students and Postdoctoral Scientists)

SPEAKERS

- Maria Alvim Gaston, Ph.D., Eli Lilly and Company, Indianapolis, IN
- Joel Soler, Ph.D., Eli Lilly and Company, Indianapolis, IN

5:15 p.m. - 6:00 p.m.

Ballroom D

SESSION 6

Opportunities for Extramural Careers at NIAID: Division of Extramural Activities

(Recommended for Graduate Students and Postdoctoral Scientists)

SPEAKER:

- Patricia A. Gonzales Hurtado, Ph.D., National Institutes of Health, National Institute of Allergy and Infectious Diseases, Scientific Review Program, Bethesda, MD

5:15 p.m. - 6:00 p.m.

304 AB

SESSION 7

How To Become The CEO Of Your Career; Dismantling 3 Disempowering Myths

(Recommended for Faculty, Program Directors, and Exhibitors)

SPEAKER

- Asia Bribiesca-Hedin, M.B.A., M.P.A., University of Southern California / CEO, Bridgwell Professional Services

5:15 p.m. - 6:00 p.m.

 304 CD

SESSION 8

Enhancing Access and Student Success through The Leadership Alliance (TLA) Workshops

(Recommended for Faculty, Program Directors, and Exhibitors)

SPEAKERS

- Gina Astorini, Ed.D., The Leadership Alliance, Providence, RI
- Don Brunson, Ph.D., Vanderbilt University, Nashville, TN

6:30 p.m. - 7:15 p.m.

 Hall A

NETWORKING DINNER

7:30 p.m. - 8:15 p.m.

 201 A-D

PREP SCHOLARS MEET & GREET

(By Invitation Only)

8:15 p.m. - 9:00 p.m.

 204 ABC

NETWORKING SESSION

LGBTQIA+ Networking Social & Tips on Succeeding as a Scientist

(Recommended for All Attendees)

SPEAKER

- Jenn Wiggins, LPC, National Institutes of Health, OITE, Bethesda, MD

MEETINGS (2 MEETING OPTIONS)

7:30 p.m. - 8:30 p.m.

 303 AB

Bridges to Baccalaureate and BUILD Program Director's Meeting

(Recommended for Current and Aspirational Directors for Program-Specific NIGMS Programs)

7:30 p.m. - 8:30 p.m.

 303 CD

NIGMS T32 Program Directors Meeting

(Recommended for Current and Aspirational Directors for Program-Specific NIGMS Programs)

7:30 p.m. - 8:30 p.m.

 Ballroom C

Bridges to Doctorate Program Directors Meeting

(Recommended for Current and Aspirational Directors for Program-Specific NIGMS Programs)

MEETINGS (2 MEETING OPTIONS)

8:30 p.m. - 9:30 p.m.

 210 AB

PREP Program Directors Meeting

(By Invitation Only)

8:30 p.m. - 9:30 p.m.

 Ballroom A

IMSD AND GRISE Program Directors Meeting

(Recommended for Current and Aspirational Directors for Program-Specific NIGMS Programs)

Thursday, November 10

7:00 a.m. - 7:00 p.m.

REGISTRATION OPEN

7:30 a.m. - 8:15 a.m.

CONTINENTAL BREAKFAST

8:30 a.m. - 9:30 a.m.

 ACC North 100

WELCOME AND OPENING KEYNOTE PANEL

(Recommended for All Attendees)

MODERATOR

- Mary Sanchez-Lanier, Ph.D., Washington State University, Pullman, WA

Greetings from NIH

- Allison Gammie, Ph.D., National Institute of General Medical Sciences

Welcome Remarks

- Avery August, Ph.D., Cornell University, Ithaca, NY
Chairperson, ABRCMS

Keynote Address

See session title in conference app

- Carolyn R. Bertozzi, Ph.D., 2022 Nobel Prize in Chemistry
Stanford University
Howard Hughes Medical Institute Investigator

Recognition and Closing Comments

- Irene Hulede
Education Director & Project Director, ABRCMS
American Society for Microbiology, Washington, DC

CONCURRENT SCIENTIFIC SESSIONS (12 SESSION OPTIONS)

9:45 a.m. - 10:15 a.m.

 204 ABC

SESSION 1

NAD+ Flux and Resiliency in Aged Mice

(Recommended for All Attendees)

SPEAKER

- Melanie R. McReynolds, Ph.D., The Pennsylvania State University, University Park, PA

9:45 a.m. - 10:15 a.m.

 Ballroom D

SESSION 2

Cancer Prevention by Caffeine: Another Reason to Love Coffee

(Recommended for All Attendees)

SPEAKER

- Masaoki Kawasumi, M.D., Ph.D., University of Washington, Seattle, WA

Reach the Program of Your Dreams

Visit the GRE booth to get started with a \$50 discount code.

Every component of your grad school application is a chance to connect with those reviewing it. With the GRE, you can ensure you are painting a clear, vibrant picture of your potential. Visit our booth to learn how the GRE can be your bridge to grad school and get a \$50 discount.

Scan the QR code to learn more.



9:45 a.m. - 10:15 a.m.

 304 CD

SESSION 3

The Eye: The Organ with the Stickiest Vasculature in Diabetes

(Recommended for All Attendees)

SPEAKER

- **Emma M. Lessieur-Contreras, M.D., Ph.D.**, University of California, Irvine, Irvine, CA

9:45 a.m. - 10:15 a.m.

 304 AB

SESSION 4

Interdisciplinary Approach to Control Biofilm Formation Using Natural Extracts and Biocompatible Polymers

(Recommended for All Attendees)

SPEAKER

- **Victoria V. Volkis, Ph.D.**, University of Maryland Eastern Shore, Princess Anne, MD

9:45 a.m. - 10:15 a.m.

 210 AB

SESSION 5

How to Identify True Gene Orthologs Across Species

(Recommended for All Attendees)

SPEAKER

- **Constantina Theofanopoulou, Ph.D.**, Hunter College (CUNY)/Rockefeller University, New York, NY

9:45 a.m. - 10:15 a.m.

 Ballroom E

SESSION 6

Understanding Genetic Variation: Answers from African Ancestry

(Recommended for All Attendees)

MODERATOR

- **Debra Murray, Ph.D.**, Baylor College of Medicine, Houston, TX

SPEAKERS

- **Melissa Davis, Ph.D.**, Weill Cornell Medicine, New York, NY
- **Neil Hanchard, M.D., Ph.D.**, National Institutes of Health, Bethesda, MD

9:45 a.m. - 10:15 a.m.

 210 CD

SESSION 7

Microfabrication Approaches to Control Stem Cell Fate and Function

(Recommended for All Attendees)

SPEAKER

- **Quinton Smith, Ph.D.**, University of California, Irvine, Irvine, CA

9:45 a.m. - 10:15 a.m.

 303 AB

SESSION 8

The Novel Coronavirus (SARS-CoV-2), Monkeypox virus, and Our Immune System

(Recommended for All Attendees)

SPEAKERS

- **Hossam Ashour, Ph.D., B. Pharm (Hon.)**, University of South Florida, St. Petersburg, FL
- **Hatem Elshabrawy, Ph.D.**, Sam Houston State University, Conroe, TX

9:45 a.m. - 10:15 a.m.

 Ballroom C

SESSION 9

Intoxicated! Discovery of New Bacterial Toxins Reveals Novel Biochemical Pathways

(Recommended for All Attendees)

SPEAKER

- **Aria Eshraghi, Ph.D.**, University of Florida, Gainesville, FL

9:45 a.m. - 10:15 a.m.

 Ballroom A

SESSION 10

See conference program for more details

(Recommended for All Attendees)

9:45 a.m. - 10:15 a.m.

 303 CD

SESSION 11

The Intersection of Toxicology and Metabolic Syndrome

(Recommended for All Attendees)

SPEAKER

- **José E. Manautou, Ph.D.**, University of Connecticut, Storrs, CT

9:45 a.m. - 10:15 a.m.

 Ballroom B

SESSION 12

Diversify the Approach: New Techniques to Increase Diversity in Clinical Trials

(Recommended for All Attendees)

SPEAKER

- **Taylor Treadwell**, Eli Lilly and Company, Indianapolis, IN

CONCURRENT PROFESSIONAL DEVELOPMENT SESSIONS (7 SESSION OPTIONS)

10:30 a.m. - 11:15 a.m.

 304 AB

SESSION 1

Make a Positive Impression: How to Excel in Your Graduate School Interviews

(Recommended for Community College, Undergraduate, and Postbaccalaureate Students)

SPEAKERS

- **Patricia Cameron, Ph.D.**, Augusta University, Augusta, GA
- **Nicquet Blake, Ph.D.**, University of California, San Francisco, CA
- **Joshua Hall, Ph.D.**, Howard Hughes Medical Institute, Chevy Chase, MD
- **Cherilynn Shadding, Ph.D.**, The University of Texas MD Anderson Cancer Center, UT Health Graduate School of Biomedical Sciences, Houston, TX
- **Cynthia Wright, Ph.D.**, Medical University of South Carolina, Charleston, SC

10:30 a.m. - 11:15 a.m.

 304 CD

SESSION 2

Picking the Perfect Graduate Program for You

(Recommended for Students interested in the Ph.D. track)

MODERATOR

- **Lori Conlan, Ph.D.**, National Institutes of Health, OITE, Bethesda, MD

SPEAKERS

- Discussion Panel

10:30 a.m. - 11:15 a.m.

 Ballroom A

SESSION 3

M.D.- Ph.D., Is it Right for Me?

(Recommended for Students interested in the M.D., Ph.D. track)

SPEAKERS

- **Dimitri Cadet, B.S.**, University of California, Los Angeles, MD-PhD, Los Angeles, CA
- **Kayla Jackson, B.S.**, University of Southern California, Los Angeles, CA
- **Damani Piggott, M.D., Ph.D.**, The Johns Hopkins University, Baltimore, MD
- **Gabrielle Price, B.S.**, Icahn School of Medicine at Mount Sinai MD-PhD, New York, NY
- **Jose Sandoval, B.S.**, University of California, San Diego, San Diego, CA

10:30 a.m. - 11:15 a.m.

 Ballroom B

SESSION 4

Transitioning from Academia to Industrial Research-Career Paths and Opportunities in STEM

This session is sponsored by Eli Lilly & Company

(Recommended for Graduate Students and Postdoctoral Scientists)

SPEAKERS

- **Chris Burcham, Ph.D.**, Eli Lilly and Company, Indianapolis, IN
- **Kathryn Wittenberg, M.S.**, Eli Lilly and Company, Indianapolis, IN

10:30 a.m. - 11:15 a.m.

 303 AB

SESSION 5

Belonging in Academia: The Positive Impact of BIPOC Founded Organizations

(Recommended for Graduate Students and Postdoctoral Scientists)

SPEAKERS

- **Brionna Davis-Reyes, Ph.D.**, Yale University, New Haven, CT
- **Christine Vazquez, Ph.D.**, University of Pennsylvania, Philadelphia, PA
- **Patricka Williams-Simon, Ph.D.**, University of Pennsylvania, Philadelphia, PA

10:30 a.m. - 11:15 a.m.

 303 CD

SESSION 6

Developing a Holistic Graduate Program: Ensuring Student Success throughout the Student Lifecycle

(Recommended for Faculty, Program Directors, and Exhibitors)

SPEAKERS

- **Brandy Alexis**, Tulane University, New Orleans, LA
- **Carlos Grijalva, Ph.D.**, University of California, Los Angeles, Los Angeles, CA
- **Bennetta Horne, Ph.D.**, Tulane University, New Orleans, LA
- **Weiwei Xu, Ph.D.**, Tulane University, New Orleans, LA

10:30 a.m. - 11:15 a.m.

 Ballroom C

SESSION 7


How We Learn...And How We Don't ★

(Recommended for Faculty, Program Directors, and Exhibitors)

SPEAKER


- **Robert A. Duke, Ph.D.**, The University of Texas at Austin, Austin, TX

CONCURRENT SCIENTIFIC SESSIONS (12 SESSION OPTIONS)

11:25 a.m. - 11:55 a.m.  **204 ABC**
SESSION 1
Exploiting Iron Metabolism for Colorectal Cancer Treatment
(Recommended for All Attendees)


SPEAKER

- **Xiang Xue, Ph.D.**, University of New Mexico, Albuquerque, New Mexico

11:25 a.m. - 11:55 a.m.  **Ballroom D**
SESSION 2
Interdisciplinary Science will Unravel Cancer's Complexities
(Recommended for All Attendees)


SPEAKER

- **Kian Kani, Ph.D.**, The Lawrence J. Ellison Institute for Transformative Medicine, Los Angeles, CA

11:25 a.m. - 11:55 a.m.  **304 AB**
SESSION 3
The MICOS Complex is Important for Heart Aging and Heart Failure
(Recommended for All Attendees)


SPEAKER


- **Antentor Hinton, Ph.D.**, Vanderbilt University, Nashville, TN

11:25 a.m. - 11:55 a.m.  **304 CD**
SESSION 4
Investigating and Manipulating Life via Photoactive Chemical Tools
(Recommended for All Attendees)

SPEAKER


- **Jonathan Tyson, Ph.D.**, Stanford University, Stanford, CA

11:25 a.m. - 11:55 a.m.  **210 AB**
SESSION 5
See conference program for more details
(Recommended for All Attendees)

11:25 a.m. - 11:55 a.m.  **Ballroom E**
SESSION 6
Creating a Disease Model and Curing Diabetes: Challenges, Successes, Paradigms, and Next Steps
(Recommended for All Attendees)

SPEAKER

- **Senta Georgia, Ph.D.**, Children's Hospital Los Angeles, Los Angeles, CA

11:25 a.m. - 11:55 a.m.  **210 CD**
SESSION 7
Lipid-based Nucleic Acid Delivery for Extrahepatic Tissues
(Recommended for All Attendees)


SPEAKER

- **Debadity Ghosh, Ph.D.**, The University of Texas at Austin, Austin, TX

11:25 a.m. - 11:55 a.m.  **303 AB**
SESSION 8
Rhythms and Blues - Infections on the Clock
(Recommended for All Attendees)


SPEAKER

- **John Brooks, Ph.D.**, Princeton University, Princeton, NJ

11:25 a.m. - 11:55 a.m.  **Ballroom C**
SESSION 9
Can Biology Reduce Society's Greenhouse Gas Footprint?
(Recommended for All Attendees)

SPEAKER

- **Timothy Donohue, Ph.D.**, University of Wisconsin-Madison, Madison, WI

11:25 a.m. - 11:55 a.m.  **Ballroom A**
SESSION 10
Sex-specific Regulation of Dopamine Release Dynamics Underlying Substance Use Disorder
(Recommended for All Attendees)


SPEAKER

- **Lillian J. Brady, Ph.D.**, Vanderbilt University, Nashville, TN

11:25 a.m. - 11:55 a.m.  **303 CD**
SESSION 11
Physiology of Obesity-Related Metabolic Disease: Our Time's True Epidemic
(Recommended for All Attendees)

SPEAKERS

- **Emilyn Alejandro, Ph.D.**, University of Minnesota, Minneapolis, MN
- **Xavier Revelo, Ph.D.**, University of Minnesota, Minneapolis, MN

11:25 a.m. - 11:55 a.m.  **Ballroom B**
SESSION 12
See conference program for more details
(Recommended for All Attendees)

12:15 p.m. - 1:00 p.m.  **Hall A**
NETWORKING LUNCH

1:10 p.m. - 1:55 p.m.

SCIENTIFIC KEYNOTE ADDRESS

Academic Creativity, Strategic Alliances and Diplomacy to Catalyze the Vaccine Sciences in Tropical Medicine

(Recommended for All Attendees)

 ACC North 100

MODERATOR

- **Alfredo Torres, Ph.D.**, University of Texas Medical Branch (UTMB), Galveston, TX

SPEAKER

- **Maria Elena Bottazzi, Ph.D., FASTMH**, Baylor University, Waco, TX

2:10 p.m. - 5:40 p.m.

EXHIBIT AND POSTER HALL OPEN

 Hall BC

2:10 p.m. - 3:10 p.m.

POSTER SESSION 1 (A)

 Hall C

3:25 p.m. - 4:25 p.m.

POSTER SESSION 2 (B)

 Hall C

4:40 p.m. - 5:40 p.m.

POSTER SESSION 3 (C)

 Hall C

6:00 p.m. - 7:15 p.m.

STUDENT ORAL PRESENTATIONS 1

(Recommended for All Attendees)

Oral Session 1:

Biochemistry and Molecular Biology

 Room 204 ABC

- O-001 Miray Girguis
- O-002 Marisa Warren
- O-003 Jose Velez
- O-004 Catharine Cipriano
- O-005 Mia Sanchez

Oral Session 1: Cancer Biology

 Ballroom D

- O-006 Isha Hawkins
- O-007 Leslie McClinton
- O-008 Jacqueline Gomez-Villa
- O-009 Aijalon Underwood
- O-010 Jordan Ewald

Oral Session 1: Cell Biology

 Room 304 CD

- O-011 María Vélez Colón
- O-012 Kyla Stenbridge
- O-013 Tyra Goodluck
- O-014 Jaleisha Vélez-Velázquez
- O-015 Olivia Morgenthaler

Oral Session 1: Chemistry & Biochemistry and Molecular Biology

 Room 210 AB

- O-016 Soziema Dauda
- O-017 Claudia Cruz-Santiago
- O-018 Andrea Mancia
- O-019 Novia Mann

Oral Session 1: Computational and Systems Biology

 Room 210 CD

- O-021 Nadia Parker
- O-022 Natalia Rodriguez
- O-023 David Gragirenes
- O-024 Tessa Byrum
- O-025 Alyssa Pratt

Oral Session 1: Developmental Biology and Genetics

 Ballroom E

- O-026 Daniela Ramos
- O-027 Betty Dessie
- O-028 Rosa Morales
- O-029 Niara Gray
- O-030 Rachel Wyetzner

Oral Session 1: Engineering, Physics and Mathematics

 Room 303 AB

- O-031 Harrison Miller
- O-032 Natali Barakat
- O-033 Oluwafunke Kolawole
- O-034 Aislin West
- O-035 Jean Jerome

Oral Session 1: Immunology

 Room 303 CD

- O-036 Darryl Sams
- O-037 Christian Cepeda
- O-038 Trinitee Oliver
- O-039 Amy Yu
- O-040 Sergio Butron

Oral Session 1: Microbiology

 Ballroom C

- O-041 Cierra Ord
- O-043 Rayshaun Pettit
- O-044 Danielle Winston
- O-045 Jessica Oros

Oral Session 1: Neuroscience

 Ballroom A

- O-046 Xavier Smith
- O-047 Kathleen Bostick
- O-048 Emily Church
- O-049 Saleha Mir
- O-050 Tammy Nguyen

Oral Session 1: Physiology and Pharmacology

 Room 304 AB

- O-051 Youstina Labib
- O-052 Iyinyeoluwa Okulate
- O-053 Atuahene Adu-Gyamfi
- O-054 Lenondre King
- O-055 Jaelen Bethea

Oral Session 1: Social and Behavioral Sciences and Public Health

 Ballroom B

- O-056 Kemani Hunter
- O-057 Alexis Carlon
- O-058 Charis Haynes
- O-059 Madeleine Phan
- O-060 Sehrish Ali

7:15 p.m. - 8:00 p.m.
NETWORKING DINNER

 Hall A

8:00 p.m. - 9:00 p.m.
MAPRS PROGRAM DIRECTOR MEETING
(By Invitation Only)

 207 D

CONCURRENT PROFESSIONAL DEVELOPMENT SESSIONS (2 SESSION OPTIONS)

8:00 p.m. - 9:30 p.m.
SESSION 1
Accessibility Panel Discussion
(Recommended for All Attendees)

 Ballroom E

8:00 p.m. - 9:30 p.m.
SESSION 2
The Art of Mental Revolution: A Musical Exploration
(Recommended for All Students)

 304 CD

SPEAKERS

- **AZA Allsop, M.D., Ph.D.**, Yale University, Cambridge, MA
- **Bruce Birren, Ph.D.**, Broad Institute, Cambridge, MA
- **Dervin Cunningham, M.D.**, Yale University, Cambridge, MA

8:00 p.m. - 9:30 p.m.
Eli Lilly and Company Reception
(By Invitation Only)

 201 ABC

Friday, November 11

7:00 a.m. - 5:00 p.m.
REGISTRATION OPEN

7:30 a.m. - 8:15 a.m.
CONTINENTAL BREAKFAST

 Hall A

CONCURRENT PROFESSIONAL DEVELOPMENT SESSIONS (7 SESSION OPTIONS)

8:30 a.m. - 9:15 a.m.
SESSION 1
Time Management & Goal Setting
(Recommended for All Students)

 Ballroom A

SPEAKER

- **Sandra Murray, Ph.D.**, University of Pittsburgh, Pittsburgh, PA

8:30 a.m. - 9:15 a.m.
SESSION 2
Navigating Without Assimilating: Strategies for Succeeding in STEM Research Environments
(Recommended for Community College, Undergraduate, and Postbaccalaureate Students)

 303 AB

SPEAKERS

- **AZA Allsop, M.D., Ph.D.**, Yale University, Cambridge, MA
- **Bruce Birren, Ph.D.**, Broad Institute, Cambridge, MA

8:30 a.m. - 9:15 a.m.
SESSION 3
Effective Strategies for Applying to Competitive Scholarships
(Recommended for Community College, Undergraduate, and Postbaccalaureate Students)

 Ballroom B

SPEAKERS

- **Joseph C. Chen, Ph.D.**, San Francisco State University, San Francisco, CA
- **Triscia Hendrickson, Ph.D.**, Morehouse College, Atlanta, GA
- **John Mateja, Ph.D.**, Goldwater Scholarship Foundation, Alexandria, VA
- **Malik McRae**, Morehouse College, Atlanta, GA
- **Annabelle Recinos**, California State University, Fullerton, CA

8:30 a.m. - 9:15 a.m.

 Ballroom C

SESSION 4

Develop Your Mentoring Team: A New Look at Building Strategic Relationships to Maximize Success in Graduate School and Beyond

This session is being sponsored by Penn State University

(Recommended for Graduate Students and Postdoctoral Scientists)

SPEAKERS

- **Margherita Cantorna, Ph.D.**, Penn State Huck Institutes of the Life Sciences, State College, PA
- **Dana Coval-Dinant**, Penn State University, State College, PA
- **Donna Korzick, Ph.D.**, Penn State Huck Institutes of the Life Sciences, State College, PA
- **Cesar Matamoros, Ph.D.**, U.S. Department of Agriculture
- **Shaneice Nettleford, B.S.**, Penn State University, State College, PA

8:30 a.m. - 9:15 a.m.

 303 CD

SESSION 5

NIH Funding Opportunities for Graduate Students through Junior Faculty that You Should Know About!

(Recommended for Graduate Students and Postdoctoral Scientists)

SPEAKERS

- **Maria Carranza, Ph.D.**, National Institute on Aging, National Institutes of Health, Bethesda, MD
- **Kenneth Gibbs, Ph.D.**, National Institute of General Medical Sciences, National Institutes of Health, Bethesda, MD
- **Timothy Gondré-Lewis, Ph.D.**, National Institute of Allergy and Infectious Disease, National Institutes of Health, Bethesda, MD
- **Patricia A. Labosky Ph.D.**, National Institutes of Health, Bethesda, MD

8:30 a.m. - 9:15 a.m.

 304 AB

SESSION 6

New Strategies and Trends for Assessing Program and Trainee Success

(Recommended for Faculty, Program Directors, and Exhibitors)

SPEAKERS

- **Sherilynn Black, Ph.D.**, Duke University, Durham, NC
- **Victoria Freedman, Ph.D.**, Albert Einstein College of Medicine, New York, NY
- **Nancy B. Schwartz, Ph.D.**, University of Chicago, Chicago, IL
- **David Van Vactor, Ph.D.**, Harvard University, Boston, MA

8:30 a.m. - 9:15 a.m.

 304 CD

SESSION 7

IIIB: Identity, Intersectionality, and Implicit Bias

(Recommended for Faculty, Program Directors, and Exhibitors)

SPEAKER

- **Debra Ragland, Ph.D.**, Duke University, Durham, NC

CONCURRENT SCIENTIFIC SESSIONS (12 SESSION OPTIONS)

9:30 a.m. - 10:00 a.m.

 204 ABC

SESSION 1

The Mechanism of a Phage Derived Protein Antibiotic

(Recommended for All Attendees)

SPEAKER

- **Bil Clemons, Ph.D.**, Caltech, Pasadena, CA

9:30 a.m. - 10:00 a.m.

 Ballroom D

SESSION 2

Pediatric Cancers and Health Care Disparities

(Recommended for All Attendees)

SPEAKERS

- **Claudia A. Benavente, Ph.D.**, University of California, Irvine, CA
- **Nicholas Pannunzio, Ph.D.**, University of California, Irvine, CA

9:30 a.m. - 10:00 a.m.

 304 AB

SESSION 3

Overcoming Barriers in both STEM and ER Protein Quality Control

(Recommended for All Attendees)

SPEAKER

- **Sonya Neal, Ph.D.**, University of California, San Diego, San Diego, CA

9:30 a.m. - 10:00 a.m.

 304 CD

SESSION 4

The Current State of Monkeypox in America

(Recommended for All Attendees)

SPEAKER

- **Robert Drummond, M.D., Ph.D.**, Montebello & DTLA Urgent Care, Montebello, CA

9:30 a.m. - 10:00 a.m.

 210 AB

SESSION 5

Non-Coding RNAs in Infectious Disease: A Paradigm Shift for Therapeutic Targets?

(Recommended for All Attendees)

SPEAKER

- **Olanrewaju Morenikeji, Ph.D.**, University of Pittsburgh, Pittsburgh, PA

9:30 a.m. - 10:00 a.m.

 Ballroom E

SESSION 6

The All of Us Research Program: Powering Diverse and Cutting-Edge Research Through Diverse Datasets

(Recommended for All Attendees)

SPEAKER

- **Karriem S. Watson, D.H.Sc., M.S., M.P.H.**, National Institutes of Health, Bethesda, MD

9:30 a.m. - 10:00 a.m.

 210 CD

SESSION 7

Sex-specific in vitro Models of Aortic Valve Stenosis

(Recommended for All Attendees)

SPEAKER

- **Brian Aguado, Ph.D.**, University of California, San Diego, San Diego, CA

9:30 a.m. - 10:00 a.m.

 303 AB

SESSION 8

Inflammasome is Amazon Prime for Immune Response

(Recommended for All Attendees)

SPEAKER

- **Reginald McNulty, Ph.D.**, University of California, Irvine, Irvine, CA

9:30 a.m. - 10:00 a.m.

 Ballroom C

SESSION 9

Impacts of Climate Change on Planetary and Human Health

(Recommended for All Attendees)

MODERATOR

- **Timothy Donohue, Ph.D.**, University of Wisconsin-Madison, Madison, WI

SPEAKERS

- **Gwen Collman, Ph.D.**, National Institute of Environmental Health Sciences, Durham, NC
- **Elizabeth Stulberg, Ph.D.**, Lewis-Burke Associates, Washington, DC

9:30 a.m. - 10:00 a.m.

 Ballroom A

SESSION 10

Vapes, Cigarettes, and Joints: Uncovering the Neurobiological Mechanisms of Nicotine and Cannabis Use

(Recommended for All Attendees)

SPEAKER

- **Christie Fowler, Ph.D.**, University of California Irvine, Irvine, CA

9:30 a.m. - 10:00 a.m.

 303 CD

SESSION 11

Using Computational Pharmacology and Toxicology Methods to help Create Safe Cosmetic Products

(Recommended for All Attendees)

SPEAKER

- **Corie Ellison, Ph.D.**, Procter & Gamble

9:30 a.m. - 10:00 a.m.

 Ballroom B

SESSION 12

See conference program for more details

(Recommended for All Attendees)

10:15 a.m. - 11:00 a.m.

 ACC North 100

SCIENTIFIC KEYNOTE ADDRESS

Addressing Health Equity through Health Literacy:

The Powerful Role of Hip Hop

(Recommended for All Attendees)

MODERATOR

- **Crystal Watkins, M.D., Ph.D.**, Medstar Harbor Hospital, Baltimore, MD

SPEAKER

- **Olajide Williams, M.D., M.S.**, Columbia University Medical Center, Founder and President, Hip Hop Public Health, New York City, NY

CONCURRENT PROFESSIONAL DEVELOPMENT SESSIONS (7 SESSION OPTIONS)

11:15 a.m. - 12:00 p.m.

 Ballroom A

SESSION 1

The Ins and Outs of Graduate School

(Recommended for Community College, Undergraduate, and Postbaccalaureate Students)

MODERATOR

- **Nicquet Blake, Ph.D.**, University of California, San Francisco, San Francisco, CA

PANELISTS

- Senior Graduate Student Panelists

11:15 a.m. - 12:00 p.m.

 Ballroom B

SESSION 2

How to Build Your Online Presence as a Scientist

(Recommended for Community College, Undergraduate, and Postbaccalaureate Students)

SPEAKERS

- **Ben Andrews**, California State University, Northridge, Northridge, CA
- **Hansook Oh, M.A.**, California State University, Northridge, Northridge, CA
- **Christa Reynolds, M.A.**, University of Arizona, Tucson, AZ

11:15 a.m. - 12:00 p.m.

 303 AB

SESSION 3

Playing Scientist: Traits of Highly Successful Researchers

(Recommended for Community College, Undergraduate, and Postbaccalaureate Students)

SPEAKER

- **Tejas Bouklas, Ph.D.**, University of California Los Angeles, Los Angeles, CA

11:15 a.m. - 12:00 p.m.

 303 CD

SESSION 4

NIH/NIGMS Research and Research Training Opportunities for Individual and Institutional Applicants, from Graduate Student to Faculty

(Recommended for Graduate Students and Postdoctoral Scientists)

SPEAKERS

- **Sydella A. Blatch, Ph.D.**, National Institutes of Health, National Institute of General Medical Sciences, Bethesda, MD
- **Shakira M. Nelson, Ph.D.**, National Institutes of Health, National Institute of General Medical Sciences, Bethesda, MD

11:15 a.m. - 12:00 p.m.

 304 AB

SESSION 5

If You Don't Publish It, You Didn't Do It

(Recommended for Graduate Students and Postdoctoral Scientists)

SPEAKER

- **Victor DiRita, Ph.D.**, Michigan State University, East Lansing, MI

11:15 a.m. - 12:00 p.m.

 Ballroom C

SESSION 6

How We Learn...And How We Don't ★

(Recommended for Faculty, Program Directors, and Exhibitors)

SPEAKER

- **Robert A. Duke, Ph.D.**, The University of Texas at Austin, Austin, TX

11:15 a.m. - 12:00 p.m.

 304 CD

SESSION 7

Making the Uncomfortable Comfortable - Changing Culture to Ensure Inclusion in Science

(Recommended for Faculty, Program Directors, and Exhibitors)

SPEAKER

- **Emmanuel Adukwu, Ph.D.**, University of the West of England, Bristol, UK

11:15 a.m. - 12:00 p.m.

 207 D

TWD-PDO STEERING COMMITTEE MEETING

(By Invitation Only)

12:15 p.m. - 1:00 p.m.

 Hall A

NETWORKING LUNCH

1:15 p.m. - 4:35 p.m.

 Hall BC

EXHIBIT AND POSTER HALL OPEN

1:15 p.m. - 2:15 p.m.

 Hall C

POSTER SESSION 4 (D)

2:10 p.m. - 3:10 p.m.

 207 D

TWD-PDO STEERING COMMITTEE AND NIH PROGRAM OFFICERS

(By Invitation Only)

2:25 p.m. - 3:25 p.m.

 Hall C

POSTER SESSION 5 (E)

3:35 p.m. - 4:35 p.m.

 Hall C

POSTER SESSION 6 (F)

4:45 p.m. - 5:30 p.m.

 ACC North 100

SCIENTIFIC KEYNOTE ADDRESS

STEM: The Importance of Science, Technology, Engineering & Math

(Recommended for All Attendees)

MODERATOR

- Beronda Montgomery, Ph.D., Grinnell College, Grinnell, IA

SPEAKER

- Mae Jemison, M.D., The Jemison Group, Inc., 100 Year Starship (100YSS), Former NASA Astronaut

5:45 p.m. - 7:00 p.m.

STUDENT ORAL PRESENTATIONS

(Recommended for All Attendees)

Oral Session 2:

Biochemistry and Molecular Biology

 Room 204 ABC

- 0-061 Shamel Basaria
- 0-062 Dinachi Okonkwo
- 0-063 Fairine Ahmed
- 0-064 Mohab Idris
- 0-065 Andoni Nolasco-Ramirez

Oral Session 2: Biochemistry and Molecular Biology and Cell Biology

 Room 210 AB

- 0-066 Shane Taylor
- 0-067 Mihir Upadhye
- 0-068 Caela Phillips
- 0-069 Amir Ledbetter
- 0-070 Michael Ack

Oral Session 2: Cancer Biology

 Ballroom D

- 0-071 Isaiah Roberts
- 0-072 Kevin Gibbons
- 0-073 Oluwatomisin Olajide
- 0-074 Jaweria Bakar
- 0-075 Darwin Huang

Oral Session 2: Cancer Biology & Microbiology

 Ballroom C

- 0-076 Vicki Yang
- 0-077 Sangita Chakraborty
- 0-078 George Morcos
- 0-079 Furqan Mahdi
- 0-080 Victoria Valentin

Oral Session 2: Developmental Biology and Genetics

 Ballroom E

- 0-081 Derick Diaz
- 0-082 Jungwon Lee
- 0-083 Yvette Sol
- 0-084 Elena Singer-Freeman
- 0-085 Jianyi Du

Oral Session 1: Engineering, Physics and Mathematics

 Room 303 AB

- 0-086 Mai Dang
- 0-087 Nicole Attram
- 0-088 Tiffany-Chau Le
- 0-089 Christopher Bain
- 0-090 Anastasia Shostak

Oral Session 2: Immunology & Engineering, Physics and Mathematics

 Room 303 CD

- 0-091 Tatiana Perez
- 0-092 Bolu Ilelaboye
- 0-094 Eduardo Zarate Martinez
- 0-095 Bethany Knight

Oral Session 2: Microbiology

 Ballroom B

- 0-096 Fadi Koria
- 0-097 Ananya Hota
- 0-098 Sarah Feng
- 0-099 Osvaldo Moreno
- 0-100 Elisa Sambataro

Oral Session 2: Neuroscience and Cell Biology

 Room 210 CD

- 0-101 Aria Grizzle
- 0-102 Aaron Hendrickson
- 0-103 Jordan Nacimba
- 0-104 Min Ju Lee
- 0-105 Boyu Huang

Oral Session 2: Physiology and Pharmacology and Social and Behavioral Sciences and Public Health

 Room 304 AB

- 0-106 Fabiola Beauvoir
- 0-107 Kathryn Enquist
- 0-108 Oluwatomisin Salami
- 0-109 Faythe Cooper
- 0-110 Luis Nazaire

Oral Session 2: Social and Behavioral Sciences and Public Health

 Ballroom A

- 0-111 John Jachimiak
- 0-112 Cindy Kagya
- 0-113 Allana Jackson
- 0-114 Abigail Manoylo
- 0-115 Ngozika Emezienna

Oral Session 2: Social and Behavioral Sciences and Public Health

 Room 304 CD

- 0-116 Isis Burks
- 0-117 Faith Hudnall
- 0-118 Ihtsham Chaudhry
- 0-119 Kennedy Chastang
- 0-120 Alexandra Baez

7:15 p.m. - 9:30 p.m.

 Grand Plaza

20th Anniversary Celebration

Saturday, November 12

7:00 a.m. - 1:00 p.m.

REGISTRATION OPEN

8:00 a.m. - 9:00 a.m.

CONTINENTAL BREAKFAST

 Hall A

8:15 a.m. - 9:15 a.m.

EXHIBITOR FEEDBACK SESSION & BREAKFAST

(For Exhibitors Only)

 207 D

8:15 a.m. - 9:15 a.m.

MARC AND URISE PROGRAM DIRECTORS MEETING

(Recommended for Current and Aspirational Directors for Program-Specific NIGMS Programs)

 210 AB

9:30 a.m. - 11:30 a.m.

EXHIBIT HALL OPEN

 Hall B

9:30 a.m. - 10:30 a.m.

POSTER SESSION 7 (G) VIRTUAL

10:30 a.m. - 11:30 a.m.

POSTER SESSION 8 (H) VIRTUAL

5:00 p.m. - 5:30 p.m.

 ACC North 100

CLOSING KEYNOTE ADDRESS

**Conversations with ABRCMS Alumni:
Where Are They Now?**

MODERATOR

- **Juan Ramirez Lugo, Ph.D.**, University of Puerto Rico, Rio Piedras, Puerto Rico

ABRCMS ALUMNI PANELISTS

- **Patricia Salgado Pirbhoy, Ph.D.**, University of California, Irvine, Irvine, CA
- **Kennita Johnson, Ph.D.**, University of North Carolina, Chapel Hill, NC
- **Robert Drummond, M.D., Ph.D.**, Montebello & DTLA Urgent Care, Montebello, CA

5:30 p.m. - 7:30 p.m.

 ACC North 100

AWARDS CEREMONY AND RECOGNITION

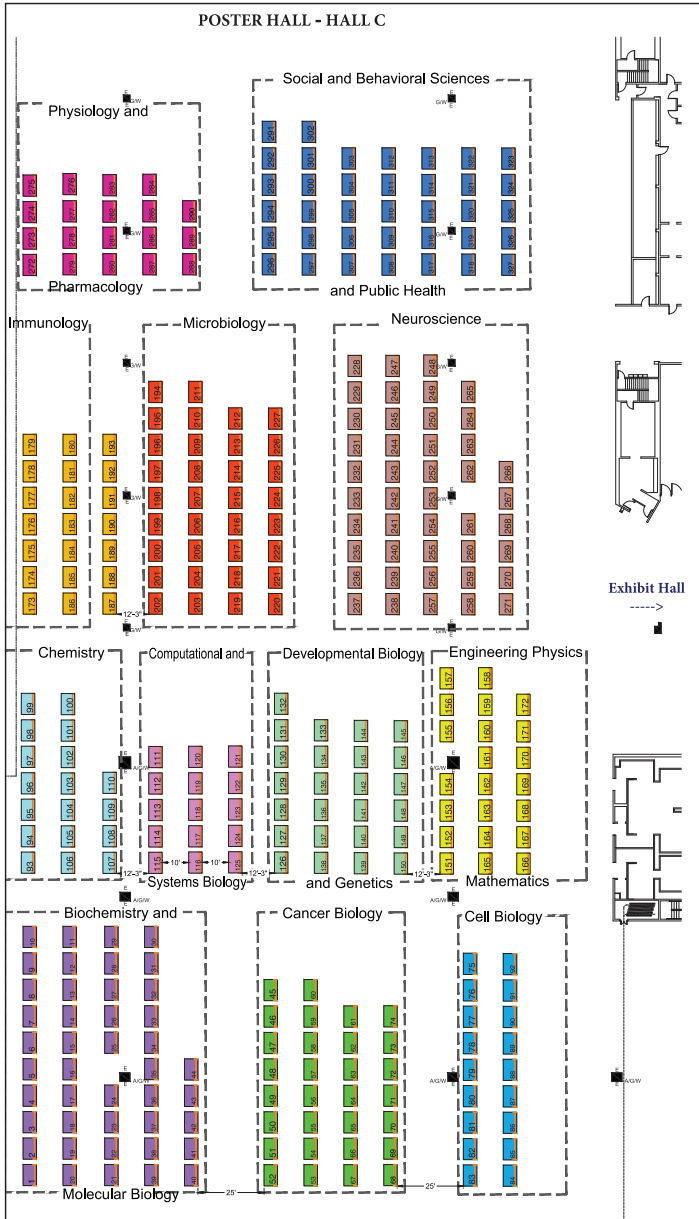
7:45 p.m. - 8:45 p.m.

 Hall A

CLOSING DINNER

Poster Hall Map

ALL ABRCMS POSTERS AND POSTER PRESENTATIONS ARE LOCATED IN HALL C OF THE ANAHEIM CONVENTION CENTER.



Poster Presentation Numbers by Scientific Discipline



Biochemistry and Molecular Biology: 001-044



Engineering, Physics, and Mathematics: 151-172



Cancer Biology: 045-074



Immunology: 173-193



Cell Biology: 075-092



Microbiology: 194-227



Chemistry: 093-110



Neuroscience: 228-271



Computational and Systems Biology: 111-125



Physiology and Pharmacology: 272-290



Developmental Biology and Genetics: 126-150



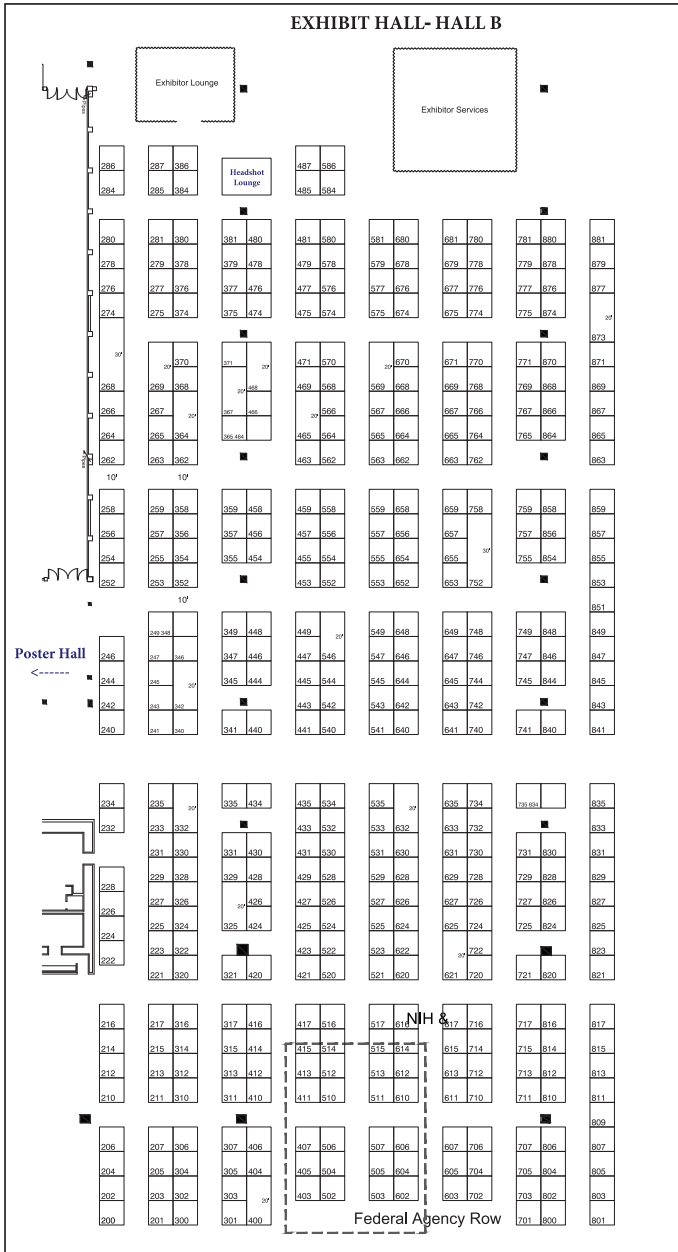
Social and Behavioral Sciences and Public Health: 291-327

ePoster Presentation Numbers by Scientific Discipline

- **Biochemistry and Molecular Biology:** 001-009
- **Cancer Biology:** 010-021
- **Cell Biology:** 022-027
- **Chemistry:** 028-031
- **Computational and Systems Biology:** 032-036
- **Developmental Biology and Genetics:** 037-043
- **Engineering, Physics and Mathematics:** 044-050
- **Immunology:** 051-055
- **Microbiology:** 056-069
- **Neuroscience:** 070-080
- **Physiology and Pharmacology:** 081-087
- **Social and Behavioral Sciences and Public Health:** 088-100

Exhibit Hall Map

ALL ABRCMS EXHIBITS ARE LOCATED IN HALL B OF THE ANAHEIM CONVENTION CENTER.



Exhibitor Listing

ACOM - Alabama College of Osteopathic Medicine	221	Brown University, Graduate School	226
AEOP Apprenticeships and Fellowships.....	256	Burrell College of Osteopathic Medicine.....	203
AIM-AHEAD	249	California Institute of Technology (Caltech)	465
Albert Einstein College of Medicine - Graduate Programs in the Biomedical Sciences	332	California School of Podiatric Medicine.....	564
American Aging Association.....	671	Carnegie Mellon University	367
American Association for Cancer Research (AACR).....	352	Case Western Reserve University	558
American Association of Veterinary Medical Colleges	269, 268	Chapman University.....	762
American Chemical Society	267,265	Children's Hospital of Philadelphia Research Institute...	812
American Dental Education Association	264	Children's Hospital Los Angeles	381
American Physical Therapy Association	254	Clemson University College of Engineering, Computing & Applied Sciences.....	874
American Physiological Society	740	Cleveland Clinic Lerner Research Institute and Lerner College of Medicine	567
American Society for Biochemistry and Molecular Biology (ASBMB).....	742	Cold Spring Harbor Laboratory	552
American Society for Cell Biology (ASCB).....	870	Colgate-Palmolive Company.....	285
American Society for Investigative Pathology (ASIP).....	745	College of Medicine and Life Sciences, The University of Toledo	579
American Society for Microbiology (ASM).....	400	Columbia University.....	453
American Society for Pharmacology and Experimental Therapeutics	748	Columbia University Department of Biological Sciences.....	479
American Society for Tropical Medicine and Hygiene....	284	Columbia University Graduate School of Arts & Sciences	448
American Society of Hematology	266	Columbia University Irving Medical Center	454
American Society of Human Genetics	846	Columbia University Irving Medical Center, Hip Hop Public Health	755
Arizona State University	677	Columbia University Mailman School of Public Health.....	455
Arizona State University, School of Molecular Sciences	681	Columbia University, The Fu Foundation School of Engineering	449
Arkansas College of Osteopathic Medicine.....	200	Cornell Biomedical and Biological Sciences PhD Program.....	431
Association of American Medical Colleges	246	Cornell University Graduate School.....	433
Auburn University College of Sciences and Mathematics.....	659	Cornell/Rockefeller/Sloan Kettering Tri-Institutional PhD Programs	435
Augusta University - The Graduate School.....	331	D. E. Shaw Research.....	679
Battelle	675	Dartmouth	463, 562
Baylor College of Medicine	774	David Geffen School of Medicine at UCLA.....	626
Baylor College of Medicine Graduate School of Biomedical Sciences	532, 534	Des Moines University, Colleges of Osteopathic Medicine, Podiatric Medicine & Surgery, and Health Sciences	211
Baylor University Graduate School.....	356	Drexel University, College of Medicine	446
Behavioral and Systems Neuroscience Graduate Program, Oregon Health & Science University.....	245	Duke University School of Medicine & Graduate School.....	424
Big Ten Academic Alliance	821	Duquesne University	374
Binghamton University - State University of New York ...	357	Eli Lilly.....	364
Biological and Biomedical Sciences Program at Yale (BBS)	649	EMD Serono.....	384
Boston University Biological and Environmental Sciences	829	Emory University, Laney Graduate School.....	713,717,75,711,816
Boston University Chobanian & Avedisian School of Medicine	827	Endocrine Society.....	278
Boston University College of Engineering	831	ETS.....	574
Boston University School of Public Health.....	825	EXPAND NSF - NRT.....	529
Boston University, Bioinformatics	828	Fred Hutchinson Cancer Center.....	813
Boston University-Graduate Program for Neuroscience ..	830	Fulgent Genetics	757
Brandeis University Division of Science	665	Genentech	741
Broad Institute of MIT and Harvard	646		
Brookhaven National Laboratory	370		
Brown University School of Public Health	549		

Exhibitor Listing

Genomic Data Science Community Network	475	Lawrence Livermore National Laboratory	876
Genomics Education Partnership.....	759	Lehigh University.....	276
Georgetown University Graduate and Training Programs	329	Louisiana State University Health Sciences Center.....	447
Georgia State University.....	880	LSU Department of Chemistry.....	287
Georgia State University's Graduate School	878	Marian University - College of Osteopathic Medicine	201
Gerstner Sloan Kettering Graduate School of Biomedical Sciences.....	434	Marshall University.....	779
Graduate School of Biomedical Sciences		Mayo Clinic.....	468
St. Jude Children's Research Hospital.....	814	Medical College of Wisconsin.....	240
Great Lakes Bioenergy Research Center	806	Medical University of South Carolina	553
Gulf Coast Consortia	533	Meharry Medical College	778
Harvard Division of Medical Sciences	643	Memorial Sloan Kettering Cancer Center Department of Medical Physics.....	575
Harvard Integrated Life Sciences.....	640	Michigan State University College of Osteopathic Medicine	217
Harvard John A. Paulson School of Engineering and Applied Sciences.....	644	Michigan State University Graduate School	735, 834
Harvard T.H. Chan School of Public Health	645	Midwestern University.....	215
Harvard University Graduate Programs in Biophysics.....	642	Midwestern University - Downers Grove, Illinois Campus	668
Harvard/MIT MD-PhD Program	641	MinorityPostdoc.org of DiverseScholar	868
Harvard-MIT Health Sciences & Technology.....	458	MIT, Center for Brains, Minds and Machines	457
Higher Education Recruitment Consortium- HERC	853	MIT, Department of Biology	459
Houston Methodist Academic Institute	257	Molecular, Cell, and Developmental Biology at the University of Pittsburgh	864
Howard Hughes Medical Institute (HHMI).....	516	Morehouse College Public Health Sciences Institute	657
Howard University Graduate School	777	Morehouse School of Medicine.....	847,849
Icahn School of Medicine at Mount Sinai	358	Morehouse School of Medicine Physician Assistant Studies Program	581
Idaho College of Osteopathic Medicine	207	National Academies of Sciences, Engineering, and Medicine	252
Indiana University -- Dept. of Psychological & Brain Sciences, Program in Neuroscience, Cognitive Sciences.....	767	National Alliance for Hispanic Health	477
Indiana University Biomedical Sciences Graduate Programs	325	National Cancer Institute.....	502
Indiana University Purdue University Indianapolis (IUPUI)	262	National Center for Advancing Translational Sciences....	704
Indiana University, Bloomington.....	765	National Institutes of Health, Center for Scientific Review (CSR).....	505
Indiana University, The University Graduate School.....	727	National Institute of Arthritis and Musculoskeletal and Skin Diseases	705
Indiana University-Bloomington	769	National Institute of Dental and Craniofacial Research (NIDCR)	706
Institute for Biomedical Sciences, Georgia State University	456	National Institute of General Medical Sciences.....	702
Integrated Life Sciences, University of Georgia	231	National Institute of Mental Health	707
Johns Hopkins University Bloomberg School of Public Health and School of Nursing	312	National Institute of Neurological Disorders and Stroke (NINDS).....	606
Johns Hopkins University Krieger School of Arts & Sciences.....	320	National Institute on Alcohol Abuse and Alcoholism (NIAAA).....	507
Johns Hopkins University Program in Cell, Molecular, Developmental Biology, and Biophysics.....	322	National Institutes of Health	703
Johns Hopkins University School of Medicine	314	National Institutes of Health, National Institute of Allergy and Infectious Diseases.....	605
Johns Hopkins University Whiting School of Engineering.....	316	National Institutes of Health, Office of Training and Education	701
Kaiser Permanente Bernard J Tyson School of Medicine.....	781	National Research Mentoring Network	523
Kansas City University of Medicine and Biosciences.....	222	National Science Foundation	224
Kansas College of Osteopathic Medicine	216	Neuroscience Graduate Program / Oregon Health & Science University.....	247
Keck Graduate Institute	568	New York Institute of Technology College of Osteopathic Medicine	204
Keck School of Medicine of the University of Southern California.....	444		
Lawrence Berkeley National Laboratory.....	376		

Exhibitor Listing

New York University	346	Sam Houston State University.....	202
New York University Center for Neural Science	349	School of Graduate and Postdoctoral	
New York University, Department of Biology	347	Studies/Rosalind Franklin University.....	663
New York University, Vilcek Institute		Sigma Xi	480
of Graduate Biomedical Sciences	348	Society for Developmental Biology.....	746
NIBIB/NIH	607	Society of Toxicology.....	744
NIDDK.....	506	Stanford University	859
NIH Loan Repayment Programs	602	Stony Brook University.....	368
NIH Oxford-Cambridge Scholars Program.....	604	Summer Health Professions Education Program	
NIH STEP-UP Program.....	803	(SHPEP).....	244
NIH/National Institute of Environmental		SUNY Downstate Health Sciences University.....	580
Health Sciences	504	Syracuse University.....	578
NIH/NIAD	603	Texas A&M University.....	873
Noorda College of Osteopathic Medicine	274	Texas A&M University, Department of Chemistry	866
North Carolina A&T State University	429	Texas Tech University Health Sciences Center,	
North Carolina Central University	421	Graduate School of Biomedical Sciences	321
North Carolina State University	423	The Center for Graduate and Professional	
Northeastern University.....	678	Diversity Initiatives (CGPDI).....	770
Northwestern Master of Science in Law Program.....	776	The George Washington University Institute for	
Northwestern University-The Graduate School	724, 726	Biomedical Sciences.....	547
Novartis Institutes for Biomedical Research	879	The Graduate Center, City University of New York.....	279
NYU School of Global Public Health.....	871	The Graduate School of the Stowers Institute	
NYU Tandon School of Engineering	345	for Medical Research	676
Oakland University William Beaumont		The Graduate School, Princeton University.....	546, 548
School of Medicine	758	The Jackson Laboratory.....	851
Ohio University Heritage College of		The Leadership Alliance	227
Osteopathic Medicine	213	The Lundquist Institute.....	559, 658
Old Dominion University.....	277	The National Heart, Lung, and Blood Institute.....	503
Oregon Health & Science University Program		The Ohio State University College of Medicine.....	833, 835
in Biomedical Sciences.....	243	The Ohio State University Life Sciences	
Pacific Northwest University of Health Sciences	242	Interdisciplinary Graduate Program.....	730
Pfizer, Inc.	281	The Ohio State University, College of Engineering	877
Philadelphia College of Osteopathic Medicine (PCOM) ..	214	The Ohio State University, College of Veterinary	
Physician Assistant Education Association	557	Medicine	865
Physicians Committee for Responsible Medicine.....	576	The Pennsylvania State University, Office of	
Precise Advanced Technologies and Health		Graduate Educational Equity Programs	731,729
Systems for Underserved Populations (PATHS-UP).....	535	The Rockefeller University	428
PRIME-LA UCLA David Geffen School of Medicine	280	The Scripps Research Institute	414
Purdue University, The Graduate School	725	The University of Alabama	474
Regeneron Pharmaceuticals.....	410	The University of Chicago	732
Rensselaer Polytechnic Institute	340	The University of Kansas - Graduate Training in	
Rice University Office of Graduate and		Chemical Biology.....	375
Postdoctoral Studies	528	The University of Kansas - Madison & Lila Self	
Rocky Vista University.....	212	Graduate Fellowship	780
Rosetta Commons.....	377	The University of North Texas Health Science	
Ross University School of Medicine	680	Center at Fort Worth.....	555
Roswell Park Comprehensive Cancer Center	674	Touro University Nevada	747
Rowan University School of Osteopathic Medicine	815	Towson University	771
RowanSOM - Graduate School of Biomedical Sciences..	817	Tufts University, Graduate School of	
Rush University Graduate College Chicago	307	Biomedical Sciences.....	826
Rutgers University - Newark Biomedical		Tulane University.....	566
& Health Sciences	722	Tuskegee University	775
Rutgers University-New Brunswick	720	UAG, School of Medicine	854
Saint Louis University	749	UAMS Graduate School	275
Salk Institute for Biological Studies.....	577	UC Riverside Science Graduate Programs.....	628

Exhibitor Listing

UC San Diego.....	621	University of Illinois Urbana-Champaign	721
UC San Diego Biological Sciences.....	625	University of Iowa	824
UC San Diego Biomedical Sciences.....	629	University of Kentucky, College of Dentistry.....	768
UC Santa Barbara.....	627	University of Kentucky, College of Health Sciences	669
UCLA Graduate Division	620	University of Kentucky, College of Medicine	667
UCLA Graduate Programs in Bioscience.....	622	University of Kentucky, College of Pharmacy	766
UCLA Medical Scientist Training Program (MSTP).....	624	University of Louisville	342
UGA School of Chemical, Materials, and Biomedical Engineering.....	234	University of Maryland College of Computer, Mathematical, and Natural Sciences	764
UMass Chan Medical School.....	520,522	University of Maryland Medical Scientist Training Program and Graduate Programs.....	656
UNC Chapel Hill SOM – PhD & MD-PhD	420	University of Maryland School of Pharmacy.....	858
UNC Gillings School of Global Public Health	425	University of Maryland, Baltimore County (UMBC)	654
Univ of TN Graduate School	863	University of Miami, Graduate School (MPH, MS, PhD, MSTP).....	311, 310
University at Buffalo (SUNY) College of Arts and Sciences.....	413	University of Michigan - Biomedical Engineering	303
University at Buffalo (SUNY) Institute for Strategic Enhancement of Educational Diversity (iSEED).....	417	University of Michigan - College of Pharmacy and Program in Chemical Biology	304
University of Alabama at Birmingham	512, 510, 514	University of Michigan - Human Genetics.....	848
University of Arizona College of Medicine Tucson	378	University of Michigan - Medical Scientist Training Program & Chemistry PhD.....	302
University of Arizona Graduate College.....	869	University of Michigan - Rackham Graduate School	305
University of Buffalo (SUNY)	415	University of Michigan - School of Dentistry	301
University of California, Berkeley.....	610	University of Michigan - Biomedical School Office of Graduate & Postdoctoral Studies.....	300
University of California, Davis	615, 617	University of Minnesota - Graduate School Diversity Office	728
University of California, Irvine – School of Medicine.....	613	University of Minnesota Medical Scientist Training Program (MD/PhD)	714
University of California, Irvine- Graduate Division.....	611	University of Minnesota, Biomedical Graduate Research Education and Training	716
University of California, Merced	631	University of Missouri Biochemistry & Chemistry.....	844
University of California, San Francisco.....	614, 612	University of Missouri Biological Sciences & NIH PREP Scholars Program	840
University of California, Santa Cruz	616	University of Missouri College of Veterinary Medicine	843
University of Cincinnati College of Medicine.....	341	University of Missouri Translational Biosciences PhD Program.....	845
University of Colorado Boulder	670	University of Missouri, Graduate School & Life Sciences	841
University of Colorado Cancer Center	664	University of Nebraska - Lincoln, Office of Graduate Studies.....	823
University of Colorado Denver I Anschutz Medical Campus.....	662	University of Nebraska Medical Center.....	330
University of Delaware, Graduate College	752	University of New England College of Osteopathic Medicine	205
University of Florida - College of Pharmacy.....	379	University of North Carolina at Chapel Hill & NC State Joint Biomedical Engineering Graduate Program ..	355
University of Florida - Department of Infectious Diseases & Immunology	412	University of North Carolina at Charlotte Graduate School	427
University of Florida McKnight Brain Institute	359	University of North Carolina Eshelman School of Pharmacy	426
University of Florida, College of Liberal Arts and Sciences.....	365	University of Notre Dame.....	856
University of Florida, College of Medicine, Graduate Program in Biomedical Sciences (PhD Program)	371	University of Oregon - Department of Biology.....	469
University of Georgia PREP@UGA	232	University of Pennsylvania Department of Chemistry	253
University of Georgia, College of Pharmacy.....	228		
University of Georgia, College of Public Health	235		
University of Georgia, Graduate School	229		
University of Georgia, Neuroscience.....	233		
University of Houston.....	666		
University of Illinois - School of Molecular & Cellular Biology.....	734		
University of Illinois at College of Medicine - Medical Scientist Training Program	569		
University of Illinois Department of Chemistry	820		

Exhibitor Listing

University of Pennsylvania, Perelman School of Medicine	354	USF Morsani College of Medicine PhD Program	712
University of Pittsburgh and Carnegie Mellon University MSTP	326	USF PhD Programs in College of Engineering	710
University of Pittsburgh School of Medicine	225	USUHS - Graduate Programs in Biomedical Sciences and Public Health	525
University of Pittsburgh School of Medicine, Office of Graduate Studies		UT Health San Antonio Graduate School of Biomedical Sciences	317
Office of Biomedical Graduates	544	UT Health San Antonio Office of Postdoctoral Affairs	313
University of Pittsburgh, Kenneth P. Dietrich Graduate School of Arts and Sciences	258	UT Health San Antonio South Texas MSTP	315
University of Rochester	563,565	UT Southwestern Medical Center	464
University of South Carolina	554	UW M3D & Neuroscience	809
University of Southern California	443	UW School of Public Health	807
University of Southern California Leonard Davis School of Gerontology	855	Van Andel Institute Graduate School	324
University of Southern California, Programs in Biomedical and Biological Sciences	440	Vanderbilt Graduate School and Fisk-Vanderbilt Bridge Program	635
University of Texas at Austin College of Pharmacy	362	Vanderbilt University	633
University of Texas at Dallas	524	Vanderbilt University Biomedical PhD, MD-PhD, and MD Programs	632
University of Texas at El Paso	259	Vanderbilt University, School of Engineering	630
University of Texas at El Paso	881	VCOM - Auburn, Carolinas, Louisiana, Virginia	210
University of Texas MD Anderson Cancer Center		Virginia Commonwealth University	416
UTHealth Graduate School of Biomedical Sciences	531	Virginia Polytechnic Institute and State University	241
University of Texas Medical Branch – Graduate School of Biomedical Sciences	530	Virginia Tech	328
University of the Incarnate Word School of Osteopathic Medicine	263	Virginia Tech	481
University of Toledo	556	Virginia Tech Carilion School of Medicine	655
University of Utah Bioscience PhD Programs & MD-PhD	867	Wake Forest Graduate Programs In Biomedical Sciences	466
University of Virginia School of Medicine Biomedical Sciences Graduate Program	527	Washington State University	476
University of Washington School of Pharmacy	802	Washington University - McDonnell Genome Institute	857
University of Washington, Department of Immunology	805	Washington University in St Louis, Office of Postdoctoral Affairs	405
University of Washington, Dept. of Biochemistry	811	Washington University in St. Louis Division of Biology and Biomedical Sciences	406
University of Washington, Medical Scientist Training Program (MD/PhD) and Genome Sciences Grad Program	804	Washington University in St. Louis School of Medicine Master of Science Degrees and Summer Research	404
University of Washington, Molecular & Cellular Biology Program	800	Washington University in St. Louis, MD-PhD Program (MSTP) & MD	407
University of Washington, Molecular Engineering	801	Washington University in St. Louis, Vagelos Division of Biology & Biomedical Sciences	403
University of Wisconsin - Biological Sciences & SciMed Graduate Research Scholars Program	541	Washington University School of Medicine	411
University of Wisconsin - Madison	542	Water and Life Interface Institute	521
University of Wisconsin - Madison, Biochemistry & Nutritional Sciences	545	Wayne State University	515,513,511,517
University of Wisconsin - Madison, Biophysics and Chemistry	543	Weill Cornell / Rockefeller / Sloan Kettering	
University of Wisconsin-Madison - Cellular & Molecular Biology, Genetics, and Microbiology	540	Tri-Institutional MD-PhD Program	430
US Centers for Disease Control and Prevention-National Center for Immunization and Respiratory Disease	471, 570	Weill Cornell Medicine	335
USC Neuroscience Graduate Program	441	Weill Cornell Medicine - Population Health Sciences	526
USC Population and Public Health Sciences	445	West Virginia School of Osteopathic Medicine	206
USC STEM and Computer Science Programs	380	West Virginia University	306
		Western University of Health Sciences	223
		William Carey University	255
		Worcester Polytechnic Institute	478
		Yale	648
		Yale MD-PhD Program	647
		Yale School of Medicine	653
		Yale University	652



Mentoring Matters!

Research shows that mentorship plays a significant role in the academic and professional success of both mentees and mentors.

ASM's **Future Leaders Mentoring Fellowship**

is a transformative, 2-year experience that provides up-and-coming scientists with personalized guidance and coaching from established scientists in the field.

Mark your calendar! Applications for the 2023 mentee and mentor cohorts open on November 30, 2022.



asm.org/fellowships

Notes



Cancer Prevention Fellowship Program

Applications accepted May–August for positions starting the following June.

Be a part of the program that supports postdoctoral research in cancer prevention & control and professional development, plus offers:

- Competitive stipends, relocation expenses, health insurance benefits, and travel allowances
- Support for up to four years
- Opportunity to earn your MPH, sponsored by NCI
- Research opportunities with experienced NCI mentors
- A cohort of fellows spanning STEM and other fields
- Career development mentoring with dedicated fellowship coach

A Multidisciplinary
Fellowship Opportunity

LEARN MORE!

 cpfp.cancer.gov

 CPFPCoordinator@mail.nih.gov

Biology | Health
Services | Nutritional
Sciences | Psychology |
Biostatistics | Chemistry | Public
Health | Engineering | Epidemiology

Contact Information

Project Director, Plenary Sessions, and Partnerships

Irene Hulede
(202) 942-9295
ihulede@asmusa.org

Graduate Symposium, and Scientific & Professional Development Sessions, and Affiliated Events

Tiffani Fonseca, M.B.A.
(202) 942-9283
tfonseca@asmusa.org

Student Travel Awards

Ronica Rodela
(202) 942-9228
rrodela@asmusa.org

Student Presentations & Judges Program

Leah Dixon
(202) 942-9348
ldixon@asmusa.org

ABRCMS 365 (Year-round Virtual Programming)

Jan Kang, Ph.D.
(202) 942-9239
jkang@asmusa.org.

Exhibits & Sponsorship

ABRCMSExhibits@asmusa.org

ABRCMS Mailing Address

ABRCMS
1752 N Street, N.W.
Washington, DC 20036



Managed by
AMERICAN
SOCIETY FOR
MICROBIOLOGY

Funded by



abrcms.org