

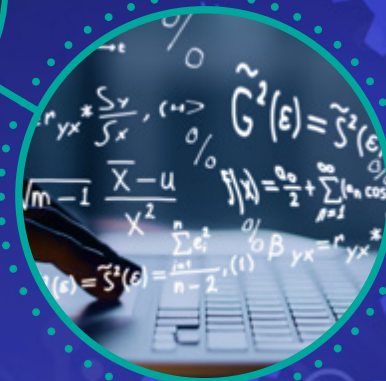
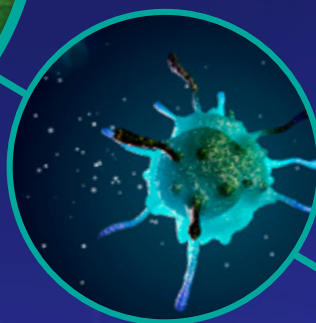
Preparing the Most Diverse Next Generation
of Scientific Leaders



ABRCMS 2021

November 10-13, 2021 | Virtual

Final Program



Managed by
**AMERICAN
SOCIETY FOR
MICROBIOLOGY**

Funded by



National Institute of
General Medical Sciences

Table of Contents

Conference Welcome (Avery August, Ph.D.)	3
Greetings (NIH Directors)	4
Schedule at a Glance	5
ABRCMS Steering Committee	7
Important Information	8
Keynote & Concurrent Scientific Speakers	9
The ABRCMS Program	11

Recipient of the 2019 AIMBE Excellence in STEM Education Award

Join the Conversation. Follow us on Twitter, Facebook, and Instagram to get the latest updates, opportunities, and featured speakers at ABRCMS 2021.

 facebook.com/ABRCMS

 twitter.com/ABRCMS

 instagram.com/ABRCMS

Don't forget to use the hashtag #ABRCMS2021

Welcome from Dr. Avery August



On behalf of the Steering Committee for Annual Biomedical Research Conference for Minority Students (ABRCMS), and the American Society for Microbiology, I would like to extend a heartfelt welcome to ABRCMS 2021 Virtual. This is the second year that we are meeting in your spaces due to our concern about the continued risks of the COVID-19 pandemic. The pandemic has forced us to make major changes to our lives, reduced access to in person research (including summer programs) among other events, and the need to conduct much of our work virtually has strained all of us. This, along with the continued emotional burden we bear in the aftermath of the protests against systemic racism. The ABRCMS community has been there for us in the past, and we continue to be there for you now. We are extremely proud that throughout all of this, ABRCMS continues its very strong traditions of investment in diversity and inclusion with excellence in STEM.

ABRCMS has a long history of working to create a diversified STEM community, working with Black, Indigenous, Hispanic/Latinx, and other underrepresented students towards careers in STEM research. Whether this is your first ABRCMS, or your 10th, this is your home, where you can also come and belong, wherever you are in your careers. Since its first meeting, ABRCMS has been inspiring future leaders such as who go out and diversify the STEM research workforce, we want to continue to inspire even more. The COVID-19 pandemic, and the continued impact it has had on Black, Indigenous and Hispanic/Latinx communities, our communities, makes it even more clear that a diverse scientific workforce needs to be part of the future in making scientific advances including in addressing health disparities, that particularly impacts in our communities. We will continue to have leaders emerge from the ABRCMS community, who will continue to make the breakthroughs, because a more diverse workforce that comes for our communities, will have the respect of and serve our communities.

I certainly miss the dynamism of us meeting in person, seeing the eager faces of those who are attending ABRCMS for the first time, with the nervous excitement as they prepare for their first big presentation, to those who are excited about the prospect of mentoring students and catching up with friends and colleagues. We hope that we can capture some of that in this virtual space, and we have assembled an outstanding virtual program for you. The outstanding speakers and program have been specially curated to inspire, challenge and educate. From plenary speakers Prof. Eddie Glaude, Jr., political commentator and public intellectual, to Dr. Akiko Iwasaki and Dr. Ashish Jha on the most recent findings on the COVID-19 pandemic and public health, to Ms. Lizzy Velasquez sharing her so inspiring life story. From professional development programs such as “..MD or PhD, which is it right for me?”, “.. Securing a Postdoc Position for those in graduate school”, to “..Strategies for Disability Allyship in STEM”, all of which will include live chats. We also have a slate of outstanding Scientific Flash Talks and Live Chats from established as well as early career future stars in all 12 STEM fields. And a chance to showcase the outstanding talent of our future leaders of STEM who are attending ABRCMS, we are featuring daily lightning talks and posters selected from those abstract submissions.

For the students and developing scientists, I encourage you to take advantage of all that we have prepared for you. For the faculty mentors and advisors, we have the opportunity to create a virtual space that embraces all, continuing in the spirit of our in person meeting that we always strive to achieve at ABRCMS. Here at ABRCMS, we expect networking, the most cutting edge advances in the biomedical and behavioral sciences, and discussions of some of the most important issues facing minoritized students and scientists, and we expect no less in this year's virtual meeting.

We look forward to the exciting and cutting edge science emerging from our community and the inspiring words of the presenters. We especially also look forward to interacting with the exhibitors, universities and schools and programs who are eager to interact with us, with special exhibitor Spotlights and the Virtual Exhibit Hall. I encourage you to visit them often. All of this will be available on the Mobile app, which you can download and schedule session and make connections. And you can still register if you haven't yet done so!

The logistics of developing this meeting is complex and dedication and planning by the ABRCMS Steering Committee, the staff at the ASM, the exhibitors, and the many volunteers, who have done a remarkable job to make this meeting possible. Despite all that has been going on, they have continued to invest their time and efforts towards the scientific program, evaluating the abstracts, and all the planning that goes into hosting your virtual visit, manning the virtual booths, so that your virtual experience will be most rewarding. I would like to thank them all in advance for all their hard work making this unique meeting a success.

Finally, we are eternally grateful for the continued support of Division of Training, Workforce Development, and Diversity at the National Institute of General Medical Sciences, NIH, whose funding has continued to make ABRCMS what it is.

With my warmest wishes,

Avery August, Ph.D.

Avery August, Ph.D.
Chairperson, ABRCMS

Conference Welcome

On behalf of the National Institutes of Health's National Institute of General Medical Sciences (NIGMS), we'd like to welcome you to the 2021 Annual Biomedical Research Conference for Minority Students. We're very proud to support this meeting, which brings together a community of outstanding students and scientists for stimulating discussions of research, careers, and more.



This meeting is one element of our many activities in the areas of training, workforce development, diversity, and research capacity building. Our NIGMS programs range from the high school level through the undergraduate, graduate, postdoctoral and faculty levels. For example, we support an array of programs to enhance diversity in the biomedical research workforce including Science Education Partnership Awards, Bridges to the Baccalaureate, Building Infrastructure Leading to Diversity, Maximizing Access to Research Careers, Research Training Initiative for Scientific Enhancement, Initiative for Maximizing Student Development, Postbaccalaureate Research Education, Bridges to the Doctorate, Institutional Research and Academic Career Development Awards, Maximizing Opportunities for Scientific and Academic Independent Careers, the Diversity Supplement Program, the Native American Research Centers for Health, the Support for Research Excellence Program, and the National Research Mentoring Network.

For those of you who are joining as mentors and sponsors, we truly appreciate your dedication and many contributions to your students and our shared goals. For those of you still in training, we hope that your involvement in this meeting further inspires and motivates you to pursue careers and leadership positions in the biomedical research workforce. During the meeting, you will gain important allies for your future: a community of peers who will become your colleagues and friends as well as a network of scientists and mentors who are deeply committed to your success in pursuit of a career in the biomedical research workforce.

We encourage you to make the most of the meeting and take every advantage of the resources and opportunities it offers to help you prepare for the next stages of your research career. We look forward to seeing your presentations and talking to you over the course of the next few days.

Sincerely,

Jon R. Lorsch, Ph.D.

Director

National Institute of General Medical Sciences National Institutes of Health

Alison Gammie, Ph.D.

Director

Division of Training, Workforce Development, and Diversity National Institute of General Medical Sciences
National Institutes of Health

Schedule at a Glance

WEDNESDAY, NOVEMBER 10

Noon – 1:00 p.m.	Opening and Keynote Address
1:15 – 1:45 p.m.	Live Chat by Special-Interest Topics
1:55 – 2:40 p.m.	ePosters: Connect with Student Presenters
2:45 – 3:30 p.m.	Virtual Exhibitor Hall: Connect with Exhibitors
3:30 – 3:45 p.m.	BREAK
3:45 – 4:30 p.m.	Concurrent Professional Development Sessions
4:40 – 5:05 p.m.	Student Lightning Talks (I)
5:10 – 6:20 p.m.	Exhibitor Spotlight (I)
6:30 – 7:00 p.m.	Student Lightning Talks (II)
7:00 – 8:00 p.m.	Exhibitor Game Night/Live Chat with Exhibitors
8:15 – 9:15 p.m.	PREP Scholars Networking Hour

THURSDAY, NOVEMBER 11

11:00 – 11:45 a.m.	Live Chat with Exhibitors
Noon – 1:00 p.m.	Keynote Address
1:15 – 1:45 p.m.	Live Chat by Special-Interest Topics
1:55 – 2:40 p.m.	ePosters: Connect with Student Presenters
2:45 – 3:30 p.m.	Virtual Exhibitor Hall: Connect with Exhibitors
3:30 – 3:45 p.m.	BREAK
3:45 – 4:15 p.m.	Student Lightning Talk (III)
4:25 – 5:10 p.m.	Concurrent Professional Development Sessions
5:20 – 6:20 p.m.	Exhibitor Spotlight (II)
6:30 – 7:00 p.m.	Student Lightning Talk (IV)
7:00 – 8:00 p.m.	Exhibitor Game Night/Live Chat with Exhibitors
8:15 – 9:15 p.m.	Deaf/Hard-of-Hearing Networking Hour

FRIDAY, NOVEMBER 12

11:00 – 11:45 a.m.	Live Chat with Exhibitors
Noon – 1:00 p.m.	Scientific Keynote Address
1:15 – 1:45 p.m.	Live Chat by Scientific Disciplines
1:55 – 2:40 p.m.	ePosters: Connect with Student Presenters
2:45 – 3:30 p.m.	Virtual Exhibitor Hall: Connect with Exhibitors
3:30 – 3:40 p.m.	BREAK
3:40 – 4:10 p.m.	Student Lightning Talks (V)
4:25 – 4:55 p.m.	Concurrent Scientific Flash Talks
5:20 – 6:20 p.m.	Exhibitor Spotlight (III)
6:30 – 7:00 p.m.	Concurrent Professional Development Sessions
7:00 – 8:00 p.m.	Exhibitor Game Night/Live Chat with Exhibitors
8:15 – 9:15 p.m.	LGBTQIA+ Networking Hour

SATURDAY, NOVEMBER 13

Noon – 12:45 p.m.	Concurrent Professional Development Sessions
1:00 – 1:45 p.m.	Featured Career Pathway Spotlight
1:55 – 2:40 p.m.	Live Chat by Career Tracks
2:45 – 3:30 p.m.	Exhibitor Spotlight (IV)
3:30 – 3:45 p.m.	BREAK
3:45 – 4:30 p.m.	Concurrent Professional Development Sessions
4:45 – 5:30 p.m.	Presentation Awards and Closing Remarks

STEERING COMMITTEE



Avery August, Ph.D., *Chairperson*
Cornell University, College of
Veterinary Medicine



Lisa Barnes, Ph.D.
Rush University



Squire Booker, Ph.D.
Penn State University



Cherrie Boyer, Ph.D.
University of California, San
Francisco



Arturo Casadevall, M.D., M.S., Ph.D.,
The Johns Hopkins University



Lydia Contreras, Ph.D.
University of Texas at Austin



Tracy Johnson, Ph.D.
University of California, Los Angeles



Beronda Montgomery, Ph.D.
Michigan State University



Juan S. Ramírez Lugo, Ph.D.
University of Puerto Rico, Rio
Piedras



Mary Sanchez Lanier, Ph.D.
Washington State University



Crystal Watkins, M.D., Ph.D.
The Johns Hopkins University

SUBCOMMITTEES

JUDGES TRAINING AD HOC COMMITTEE



Marlene de la Cruz, Ph.D.
University of California, Irvine



Bolaji Thomas, Ph.D.
Rochester Institute of Technology



Alfredo Torres, Ph.D.
University of Texas Medical Branch at
Galveston

PARTNERSHIP AD HOC COMMITTEE



Cherié Butts, Ph.D.
Biogen, Inc.



Victoria McGovern, Ph.D.
Burroughs Wellcome Fund

Important Information

ABRCMS recognizes the significant challenges COVID-19 has placed on the scientific and educational communities. In response, ABRCMS has transitioned to a virtual meeting (ABRCMS 2021), which will be held November 10 – 13, 2021.

ABRCMS Code of Conduct. The Annual Biomedical Research Conference for Minority Students (“ABRCMS”), managed by the American Society for Microbiology (“ASM”), is one of the nation’s largest conferences for underrepresented students in STEM.

ASM prohibits and will not tolerate any form of harassment or bullying at its events, whether the event is in-person or virtual. For more information, visit: www.abrcms.org/coc

ABRCMS Conference App. Get the latest conference program, exhibitor information, live chat opportunities, Game Challenge, and much more at your fingertips with the ABRCMS Conference App. Search for **ABRCMS 2021 Virtual Experience** in your app store.

Session Times. All session times are Eastern (EST).

Time Zone Conversions:

- Noon – 8:00 p.m. (EST)
- 11:00 a.m. – 7:00 p.m. (CST)
- 10:00 a.m. – 6:00 p.m. (MST)
- 9:00 a.m. – 5:00 p.m. (PST)

ADA Services. Pursuant to the Americans with Disabilities Act, if you require services or aids to participate fully in ABRCMS 2021, please be sure to indicate this in the registration portal.

Photo Policy. In order to protect data shared during presentations, no photos nor screen shots may be taken of ePosters or scientific session slides at the ABRCMS 2021 conference.

Live Chats. Network with your peers and scientific professionals. Join an informal discussion on varied special-interest topics, career pathways, and opportunities in your scientific disciplines.

ePosters. Check out the student ePoster feature, which will be available to all attendees from November 10 – 13. Attendees will have access to ePosters and a 5-7 minute video presentation at any time on any device.

ePoster Scientific Disciplines

BIO-001 – BIO-075: Biochemistry and Molecular Biology
 CAN-079 – CAN-134: Cancer Biology
 CEL-135 – CEL-163: Cell Biology
 CHE-164 – CHE-195: Chemistry
 COM-196 – COM-228: Computational and Systems Biology
 DEV-229 – DEV-265: Developmental Biology and Genetics
 ENG-266 – ENG-300: Engineering, Physics and Mathematics
 IMM-301 – IMM-330: Immunology
 MIC-331 – MIC-380: Microbiology
 NEU-381 – NEU-450: Neuroscience
 PHY-451 – PHY-485: Physiology and Pharmacology
 SOC-486 – SOC-555: Social and Behavioral Sciences and Public Health

Concurrent Scientific Sessions. Scientific content and opportunities within the 12 STEM disciplines will be shared with the STEM community by experts, who have a breadth of knowledge on emerging scientific concepts and next steps on the following dates/times:

- **Live Chat by Scientific Disciplines:**
Friday, November 12, 2021, 1:15 – 1:45 p.m. (EST)
- **Scientific Flash Talk:**
Friday, November 12, 2021, 4:25 – 4:55 p.m. (EST)

Presentation Awards Ceremony. On **Saturday, November 13 (4:45 – 5:30 p.m.)**, ABRCMS will highlight student awardees from the 12 STEM disciplines represented at the conference.

Conference Evaluation. We value your feedback. At the conclusion of the conference, please take a few minutes to complete the Conference Evaluation in the ABRCMS 2021 conference app. Please know that every completed evaluation helps us improve future conferences.



KEYNOTE SPEAKERS



Wednesday, Nov. 10

Opening Keynote

12:15 – 1:00 p.m. EST

Lizzie Velasquez

Global Motivational Speaker, YouTube Personality,
Anti-bullying Activist and Author



Thursday, Nov. 11

Keynote

12:00 – 1:00 p.m. EST

Eddie S. Glaude, Jr., Ph.D.

New York Times Bestselling Author & Chair of Princeton's
Department of African American Studies



Friday, Nov. 12

Scientific Keynote

12:00 – 12:30 p.m. EST

Akiko Iwasaki, Ph.D.

Waldemer von Zedtwitz Professor of Immunobiology
Investigator at Howard Hughes Medical Institute



Friday, Nov. 12

Scientific Keynote

12:30 – 1:00 p.m. EST

Ashish K. Jha, M.D., M.P.H.

Dean of the School of Public Health, Professor of
Health Services, Policy and Practice,
Brown University School of Public Health

CONCURRENT SCIENTIFIC FLASH TALKS

Friday, November 12 | 4:25 – 4:40 p.m.



Scientific Discipline: Microbiology
Cell Signaling Molecules in Human Disease
Saira Bano, Ph.D., Jinnah University for Women, Karachi, Pakistan



Scientific Discipline: Physiology & Pharmacology
Non-Alcoholic Fatty Liver Disease and Drug Transporters: What is the Connection?
José Manautou, Ph.D., University of Connecticut, Storrs, CT



Scientific Discipline: Social & Behavioral Sciences and Public Health
How Can Personality Science Help Us Understand Impacts of the COVID-19 Pandemic
Jordan Booker, Ph.D., University of Missouri, Columbia, MO



Scientific Discipline: Cell Biology
Cell Organization Leading to Cell Diversity: An Imaging Journey
Blake Riggs, Ph.D., San Francisco State University, San Francisco, CA



Scientific Discipline: Engineering, Physics, and Mathematics
Using the Microbiome in Orthopedic Biomechanics
Christopher Hernandez, Ph.D., Cornell University, Ithaca, NY



Scientific Discipline: Biochemistry and Molecular Biology
Designing Vaccines to Target Chronic and Infectious Diseases in Native American Communities
Naomi Ruth Lee, Ph.D., Northern Arizona University, Flagstaff, AZ

Friday, November 12 | 4:45 – 5:00 p.m.



Scientific Discipline: Neuroscience
Neural Circuits for Bidirectional Control of Pain in the Amygdala
Yarimar Carrasquillo, Ph.D., National Center for Complementary and Integrative Health, NIH, Bethesda, MD



Scientific Discipline: Developmental Biology & Genetics
How to Make a Living, Human, Cardiac Muscle Pump
Brenda Ogle, Ph.D., University of Minnesota, Minneapolis, MN



Scientific Discipline: Cancer Biology
Race vs. Ancestry in Cancer Research
Melissa Davis, Ph.D., Cornell University, Ithaca, NY



Scientific Discipline: Immunology
Sending Cancer-Fighting T Cells to Martial Arts School: The Cell Therapy Revolution
Avery Posey, Jr., Ph.D., University of Pennsylvania, Philadelphia, PA



Scientific Discipline: Computational & Systems Biology
How Mathematical Modeling Can Help Improve Cancer Treatment
Stacey Finley, Ph.D., University of Southern California, Viterbi, Los Angeles, CA



Scientific Discipline: Chemistry
Improving Health with Human Milk
Steven Townsend, Ph.D., Vanderbilt University, Nashville, TN

Final Program

This schedule is subject to change.

Wednesday, November 10

WELCOME REMARKS

Noon – 12:15 p.m.

(Recommended for All Attendees)

SPEAKERS

- **Alison Gammie, Ph.D.**, National Institute of General Medical Sciences, NIH, Bethesda, MD
- **Avery August, Ph.D.**, Cornell University, Ithaca, NY

OPENING KEYNOTE ADDRESS

12:15 – 1:00 p.m.

(Recommended for All Attendees)

MODERATOR

- TBD

SPEAKER

- **Lizzie Velasquez**, Global Motivational Speaker, YouTube Personality, Anti-bullying Activist and Author

LIVE CHAT BY SPECIAL-INTEREST TOPICS

LIVE CHAT 1

1:15 – 1:45 p.m.

Journey to Authenticity – In the Lab and Beyond

(Recommended for Community College and Undergraduate Students, and Post-Baccalaureates)

FACILITATORS

- **Vanessa Fleites, Ph.D. Candidate**, University of Pennsylvania, Philadelphia, PA
- **Maya Hale, Ph.D. Candidate**, University of Pennsylvania, Philadelphia, PA
- **Lisa Lim, M.A.**, University of Pennsylvania, Philadelphia, PA
- **Franklin Staback Rodriguez, Ph.D. Candidate**, University of Pennsylvania, Philadelphia, PA
- **Romaine Wright, M.S.**, Charles River Laboratories, Horsham, PA

LIVE CHAT 2

1:15 – 1:45 p.m.

Building Bridges of Access: The Power of Mentoring to Increase Diversity within STEM Careers

(Recommended for Community College and Undergraduate Students, and Post-Baccalaureates)

FACILITATORS

- **Donmonique Chambliss, M.S.**, Stem Hub for Industry Networking and Exchange, Los Angeles, CA
- **Damaris Javier, M.A.**, National Research Mentoring Network, Fort Worth, TX
- **Katie Stinson, MLIS**, National Research Mentoring Network, Fort Worth, TX

LIVE CHAT 3

1:15 – 1:45 p.m.

How to D.I.E. (Diversity, Inclusion, and Equity) the Right Way

(Recommended for Graduate Students and Postdoctoral Scientists)

FACILITATOR

- **Irelene Ricks, Ph.D.**, Urban One, Silver Spring, MD

LIVE CHAT 4

1:15 – 1:45 p.m.

NIH Grants 101 & Early Career Reviewer Program

(Recommended for Nonstudents)

FACILITATORS

- **Jacinta Bronte-Tinkew, Ph.D.**, National Institutes of Health, Center for Scientific Review, Bethesda, MD
- **Gabriel Fosu, Ph.D.**, National Institutes of Health, Center for Scientific Review, Bethesda, MD

CONNECT WITH STUDENT PRESENTERS

1:55 – 2:40 p.m.

ePosters: Connect with Student Presenters

(Recommended for All Attendees)

CONNECT WITH EXHIBITORS

2:45 – 3:30 p.m.

Virtual Exhibit Hall & Networking Rooms: Connect with Exhibitors

(Recommended for All Attendees)

CONCURRENT PROFESSIONAL DEVELOPMENT SESSIONS

SESSION 1

3:45 – 4:30 p.m.

The Ins and Outs of Graduate School Panel Discussion

(Recommended for Community College and Undergraduate Students, and Post-Baccalaureates)

MODERATOR

- **Nicquet Blake, Ph.D.**, University of Texas Health Science Center San Antonio, San Antonio, TX

SPEAKERS

- Graduate Students Panel

SESSION 2

3:45 – 4:30 p.m.

Cross-Disciplinary Collaborations: The Benefits and Challenges

(Recommended for Graduate Students and Postdoctoral Scientists)

SPEAKERS

- **Peng Chen, Ph.D.**, Cornell University, Ithaca, NY
- **Tobias Doerr, Ph.D.**, Cornell University, Ithaca, NY
- **Christopher Hernandez, Ph.D.**, Cornell University, Ithaca, NY

SESSION 3

3:45 – 4:30 p.m.

To Err is Human...And It's How We Learn

(Recommended for Nonstudents)

MODERATOR

- **Nur M. Shahir, Ph.D.**, Pennsylvania State University, University Park, PA

SPEAKER

- **Robert Duke, Ph.D.**, University of Texas at Austin, Austin, TX

CONCURRENT STUDENT LIGHTNING TALKS I

SESSION 1: DEVELOPMENTAL BIOLOGY AND GENETICS

(Recommended for All Attendees)

4:42 – 4:45 p.m.

WSLTDEV-229 Cristabel Portillo, University of California, Irvine

4:47 – 4:50 p.m.

WSLTDEV-230 Maya Logan, National Institute of Environmental Health Sciences

4:52 – 4:55 p.m.

WSLTDEV-231 Priya Kosana, Jackson Laboratory

4:57 – 5:00 p.m.

WSLTDEV-232 Celeste Sanchez, University of California, Irvine

5:02 p.m.

Breakout Room Discussions (optional)

SESSION 1: CANCER BIOLOGY AND IMMUNOLOGY

(Recommended for All Attendees)

4:42 – 4:45 p.m.

WSLTCAN-076 Joshua Valenzuela, University of California Irvine

4:47 – 4:50 p.m.

WSLTCAN-077 Ana Ruas, Florida International University

4:52 – 4:55 p.m.

WSLTIMM-301 Michael Hendrix, University of Wisconsin-Whitewater

4:57 – 5:00 p.m.

WSLTIMM-302 Emily Morgan, San Diego State University

5:02 p.m.

Breakout Room Discussions (optional)

SESSION 1: ENGINEERING, PHYSICS AND MATHEMATICS AND CHEMISTRY

(Recommended for All Attendees)

4:42 – 4:45 p.m.

WSLTCH-164 Ivan Martin Del Campo, University of California, Irvine

4:47 – 4:50 p.m.

WSLTENG-266 Malyka Norville, Howard University

4:52 – 4:55 p.m.

WSLTENG-267 Cameryn Burnette, Howard University

4:57 – 5:00 p.m.

WSLTENG-268 Sarah Goldrod, Boise State University

5:02 p.m.

Breakout Room Discussions (optional)

SESSION 1: NEUROSCIENCE

(Recommended for All Attendees)

4:42 – 4:45 p.m.

WSLTNEU-381 Maria Ortega, University of Florida

4:47 – 4:50 p.m.

WSLTNEU-382 Amanda Linskens, University of Oregon

4:52 – 4:55 p.m.

WSLTNEU-383 Jenna Tijerina, University of Cincinnati

4:57 – 5:00 p.m.

WSLTNEU-384 Sandra Sandria, University of California, Irvine

5:02 p.m.

Breakout Room Discussions (optional)

EXHIBITOR SPOTLIGHT I

Featured Exhibitors, to include Q&A

(Recommended for All Attendees)

MODERATOR

- **Christopher Skipwith, Ph.D.**, American Society for Microbiology, Washington, DC

5:13 – 5:18 p.m.

University of Texas Health Science Center at San Antonio

SPEAKERS

- **Jose Cavazos, M.D., Ph.D.**, Assistant Dean & Director, MD/PhD Program, Professor of Neurology, Neuroscience, and Physiology, UT Health San Antonio
- **David S. Weiss, Ph.D.**, Professor and Dean of the Graduate School of Biomedical Sciences, UT Health San Antonio

5:20 – 5:25 p.m.

Vet Up! Program at Purdue College of Veterinary Medicine

SPEAKERS

- **Latonia Craig, Ph.D.** Assistant Dean for Inclusive Excellence, Purdue University's College of Veterinary Medicine

5:27 – 5:32 p.m.

David Geffen School of Medicine at UCLA

SPEAKERS

- **Jennifer Lucero, Ph.D.**, Associate Dean for Admissions at the David Geffen School of Medicine
- **Jam Harley, M.B.A**, Manager, David Geffen School of Medicine

5:34 – 5:39 p.m.

NIH High-Risk High Reward Research Program

SPEAKER

- **Ravi Basavappa, Ph.D.**, Program Leader, NIH Common Fund

5:41 – 5:46 p.m.

Harvard/MIT Health Sciences & Technology (HST)

SPEAKER

- **Julie Greenberg, Ph.D.**, Director of Education, Health Sciences & Technology (HST)

5:48 – 5:53 p.m.

Albert Einstein College of Medicine - Graduate Programs in the Biomedical Sciences

SPEAKER

- **Victoria H. Freedman, Ph.D.**, Assistant Professor, Department of Microbiology & Immunology, Associate Dean for Graduate Programs in Biomedical Sciences

5:55 – 6:00 p.m.

National Cancer Institute

SPEAKERS

- **Chanelle Case Borden, Ph.D.**, Program Manager, NCI Center for Cancer Training (CCT)
- **Jackie Lavigne, Ph.D., M.P.H.**, Chief, Office of Education, Division of Cancer Epidemiology and Genetics, National Cancer Institute

6:02 – 6:07 p.m.

University of Kentucky College of Pharmacy

SPEAKER

- **Trenika Mitchell, Ph.D.**, Associate Dean of Diversity & Inclusion, UK College of Pharmacy

6:10 – 6:20 p.m.

General Q&A Session

CONCURRENT STUDENT LIGHTNING TALKS II

SESSION 2: SOCIAL AND BEHAVIORAL SCIENCES AND PUBLIC HEALTH

(Recommended for All Attendees)

6:30 – 6:33 p.m.

WSLTSOC-486 Omar Alali, US Air Force Academy

6:35 – 6:38 p.m.

WSLTSOC-487 Giovanni Marquez, The University of Arizona

6:40 – 6:43 p.m.

WSLTSOC-488 Abril Islas, University of California Irvine

6:45 – 6:48 p.m.

WSLTSOC-489 Abigail Montalmant, City College of New York

6:50 – 6:53 p.m.

WSLTSOC-490 Ashley Mota, CUNY City College of New York

6:55 p.m.

Breakout Room Discussions (optional)

SESSION 2: MICROBIOLOGY

(Recommended for All Attendees)

6:30 – 6:33 p.m.

WSLTMIC-331 Sarah Eltiste, San Diego State University

6:35 – 6:38 p.m.

WSLTMIC-332 Arturo Salazar, University of California, Irvine

6:40 – 6:43 p.m.

WSLTMIC-333 Price Holman, Rutgers University

6:45 – 6:48 p.m.

WSLTMIC-334 Anyce Godoy, San Francisco State University

6:50 – 6:53 p.m.

WSLTMIC-335 Alexandra Misciagna, University of Maryland - Baltimore County

6:55 p.m.

Breakout Room Discussions (optional)

SESSION 2: CELL BIOLOGY

(Recommended for All Attendees)

6:30 – 6:33 p.m.

WSLTCEL-135 Armaan Jamal, Johns Hopkins University

6:35 – 6:38 p.m.

WSLTCEL-136 Isabel Vargas, University of California, Irvine

6:40 – 6:43 p.m.

WSLTCEL-137 Simon Chau, CSU Long Beach

6:45 – 6:48 p.m.

WSLTCEL-138 Melissa Cesaire, Children's Hospital of Philadelphia

6:50 – 6:53 p.m.

WSLTCEL-139 Camryn Zurita, University of California, Irvine

6:55 p.m.

Breakout Room Discussions (optional)

SESSION 2: BIOCHEMISTRY AND MOLECULAR BIOLOGY

(Recommended for All Attendees)

6:30 – 6:33 p.m.

WSLTBIO-001 Peyton Carpen, Cornell University

6:35 – 6:38 p.m.

WSLTBIO-002 Afsana Rahman, Hunter College, City University of New York

6:40 – 6:43 p.m.

WSLTBIO-003 Rita Anoh, Mount St. Mary's University

6:45 – 6:48 p.m.

WSLTBIO-004 Alexis Anica, University of California, Irvine

6:50 – 6:53 p.m.

WSLTBIO-005 Angie Garcia, Bowie State University

6:55 p.m.

Breakout Room Discussions (optional)

EXHIBITOR GAME NIGHT/LIVE CHAT WITH EXHIBITORS

7:00 – 8:00 p.m.

PREP SCHOLARS NETWORKING HOUR

8:15 – 9:15 p.m.

Thursday, November 11

LIVE DISCUSSIONS

MEETING FOR CURRENT AND ASPIRATIONAL DIRECTORS FOR NIGMS TRAINING PROGRAMS

11:00 – 11:45 a.m.

Program Meetings to include:

- Undergraduate Diversity Programs (Bridges to the Baccalaureate, U-RISE, MARC, BUILD)
- Postbaccalaureate- PREP
- Graduate Diversity Programs (Bridges to the Doctorate, G-RISE, IMSD)
- Basic biomedical predoctoral T32
- MSTP
- Clinical Postdoctoral T32



LIVE CHAT WITH EXHIBITORS

11:00 – 11:45 a.m.

KEYNOTE ADDRESS

Noon – 1:00 p.m.

(Recommended for All Attendees)

MODERATOR

- TBD

SPEAKER

- **Eddie S. Glaude, Jr., Ph.D.**, New York Times Bestselling Author & Chair of Princeton’s Department of African American Studies

LIVE CHAT BY SPECIAL-INTEREST TOPICS

LIVE CHAT 1

1:15 – 1:45 p.m.

Post Baccalaureate Programs, Tips for Submitting a Successful Application, and Advice on Taking a Gap Year

(Recommended for Community College and Undergraduate Students, and Post-Baccalaureates)

FACILITATORS

- **Tameka Clemons, Ph.D.**, Meharry Medical College, Nashville, TN
- **Kimberly Williams, Ph.D.**, Spelman College, Atlanta, GA

LIVE CHAT 2

1:15 – 1:45 p.m.

Make a Positive Impression: How to Excel in Your Graduate School Interviews

(Recommended for Community College and Undergraduate Students, and Post-Baccalaureates)

FACILITATORS

- **Nicquet Blake, Ph.D.**, University of Texas Health Science Center San Antonio, San Antonio, TX
- **Patricia Cameron, Ph.D.**, Augusta University, Augusta, GA
- **Victoria Freedman, Ph.D.**, Albert Einstein College of Medicine, New York, NY
- **Nancy Street, Ph.D.**, University of Texas Southwestern Medical Center, Dallas, TX

LIVE CHAT 3

1:15 – 1:45 p.m.

How to Find, Secure and Succeed in a Postdoctoral Position

(Recommended for Graduate Students and Postdoctoral Scientists)

FACILITATORS

- **Heather Dillon, MSc.**, University of California, San Diego, CA
- **James Gould, Ph.D.**, Harvard Medical School, Cambridge, MA

LIVE CHAT 4

1:15 – 1:45 p.m.

Team-Based Learning (TBL) and its positive impact on students’ learning and engagement

(Recommended for Nonstudents)

FACILITATORS

- **Hossam Ashour, Ph.D.**, University of South Florida, Tampa, FL
- **Hatem Elshabrawy, Ph.D.**, Sam Houston State University, Huntsville, TX

CONNECT WITH STUDENT PRESENTERS

1:55 – 2:40 p.m.

ePosters: Connect with Student Presenters

(Recommended for All Attendees)

CONNECT WITH EXHIBITORS

2:45 – 3:30 p.m.

Virtual Exhibit Hall & Networking Rooms: Connect with Exhibitors

(Recommended for All Attendees)

TWD-PDO STEERING COMMITTEE MEETING (FOLLOW-UP DISCUSSION)

-Invitation Only-

2:45 – 3:30 p.m.

CONCURRENT STUDENT LIGHTNING TALKS III

SESSION 3: SOCIAL AND BEHAVIORAL SCIENCES AND PUBLIC HEALTH

(Recommended for All Attendees)

3:45 – 3:48 p.m.

TSLSOC-486 Lizeth Flores, Memorial Sloan Kettering Cancer Center

3:50 – 3:53 p.m.

TSLSOC-487 Shalini Venkat, St. Mary's University

3:55 – 3:58 p.m.

TSLSOC-488 Arlet Olivera-Zelaya, Brooklyn College CUNY

4:00 – 4:03 p.m.

TSLSOC-489 Cassie Simmons, North Greenville University

4:05 – 4:08 p.m.

TSLSOC-490 Chyna Roger, Morgan State University

4:10 p.m.

Breakout Room Discussions (optional)

SESSION 3: COMPUTATIONAL AND SYSTEMS BIOLOGY

(Recommended for All Attendees)

3:45 – 3:48 p.m.

TSLTCOM-196 Jesse Murillo, University of California Irvine

3:50 – 3:53 p.m.

TSLTCOM-197 Rebecca Hsieh, Washington State University

3:55 – 3:58 p.m.

TSLTCOM-198 Victor Feagins, The University of Texas at San Antonio

4:00 – 4:03 p.m.

TSLTCOM-199 Sarwesh Rauniyar, Arizona State University

4:05 – 4:08 p.m.

TSLTCOM-200 Leamon Crooms, University of California, San Francisco

4:10 p.m.

Breakout Room Discussions (optional)

SESSION 3 : PHYSIOLOGY AND PHARMACOLOGY

(Recommended for All Attendees)

3:45 – 3:48 p.m.

TSLTPHY-451 Robert Novo, Memorial Sloan Kettering Cancer Center

3:50 – 3:53 p.m.

TSLTPHY-452 Atuahene Adu-Gyamfi, Virginia Commonwealth University

3:55 – 3:58 p.m.

TSLTPHY-453 Sophia Aredas, University of California Irvine

4:00 – 4:03 p.m.

TSLTPHY-454 Kareem Woods, Virginia Commonwealth University

4:05 – 4:08 p.m.

TSLTPHY-455 Aaron Ahdoot, UCLA

4:10 p.m.

Breakout Room Discussions (optional)



SESSION 3: NEUROSCIENCE

(Recommended for All Attendees)

3:45 – 3:48 p.m.

TSLTNEU-381 D’Juan Moreland, UMBC

3:50 – 3:53 p.m.

TSLTNEU-382 Tayla Hunter, University of California, Berkeley

3:55 – 3:58 p.m.

TSLTNEU-383 Morgana Viana, University of North Carolina at Pembroke

4:00 – 4:03 p.m.

TSLTNEU-384 Ephraim Oyetunji, Washington University in St. Louis School of Medicine

4:05 – 4:08 p.m.

TSLTNEU-385 Malika Allen, University of Florida

4:10 p.m.

Breakout Room Discussions (optional)

CONCURRENT PROFESSIONAL DEVELOPMENT SESSIONS

SESSION 1

4:25 – 5:10 p.m.

Overcoming Imposter Syndrome

(Recommended for Community College and Undergraduate Students, and Post-Baccalaureates)

MODERATOR

- **Nicole T. Quintus, Graduate Student**, University of Arizona, Phoenix, AZ

SPEAKER

- **Robert Trevino, M.D., Ph.D.**, University of Illinois, Peoria, IL

SESSION 2

4:25 – 5:10 p.m.

Find Your Circle: Strategies for Support and Wellness in Academia

(Recommended for Community College and Undergraduate Students, and Post-Baccalaureates)

MODERATOR

- **Danielle Sanchez**, Graduate Student, San Francisco State University, San Francisco, CA

SPEAKER

- **Isola Brown, Ph.D.**, University of Michigan, Ann Arbor, MI

SESSION 3

4:25 – 5:10 p.m.

If You Don’t Publish It, You Didn’t Do It

(Recommended for Graduate Students and Postdoctoral Scientists)

MODERATOR

- **Nur M. Shahir, Ph.D.**, Pennsylvania State University, University Park, PA

SPEAKER

- **Victor DiRita, Ph.D.**, University of Michigan, Ann Arbor, MI

SESSION 4

4:25 – 5:10 p.m.

Strategies for Disability Allyship in STEM and Academia

(Recommended for Nonstudents)

SPEAKERS

- **Amanda Klingler, B.S.**, University of California, Los Angeles, Los Angeles, CA
- **Stephen Klusza, Ph.D.**, Clayton State University, Morrow, GA
- **Syreeta Nolan, B.A.**, Disabled in Higher Ed, San Diego, CA
- **Alyssa Paparella, B.S.**, Baylor College of Medicine, Houston, TX

EXHIBITOR SPOTLIGHT II

Featured Exhibitors, to include Q&A

(Recommended for All Attendees)

MODERATOR

- **Tiffani Fonseca, M.B.A.**, American Society for Microbiology, Washington, DC

5:20 – 5:25 p.m.

UMass Chan Medical School

SPEAKER

- **Ariana Balayan, Ph.D.**, Assistant Dean of Admissions and Recruiting, Morningside Graduate School of Biomedical Sciences at the UMass Chan Medical School

5:27 – 5:32 p.m.

Purdue University Post-Baccalaureate Research Education Program (PREP) for Translational Biomedical Sciences

SPEAKER

- **Susan M. Mendrysa, Ph.D.**, Director of the NIH-funded Purdue Post-baccalaureate Research Education Program (Purdue PREP) for Translational Biomedical Sciences

5:34 – 5:39 p.m.

National Research Mentoring Network (NRMN)

SPEAKER

- **Damaris Javier, M.A.**, Associate Director, National Research Mentoring Network-Resource Center

5:41 – 5:46 p.m.

University of Pittsburgh Molecular Cellular and Developmental Biology Graduate Program

SPEAKER

- **Mark Rebeiz**, Associate Professor, Evolutionary Development, University of Pittsburgh

5:48 – 5:53 p.m.

MIT Department of Biology

SPEAKERS

- **Mandana Sassanfar, Ph.D.**, Lecturer, Director of Diversity and Science Outreach, MIT Department of Biology
- **Amy Keating, Ph.D.**, Professor of Biology and Biological Engineering; Associate Department Head; Graduate Officer

5:55 – 6:00 p.m.

Medical College of Wisconsin

SPEAKERS

- **Anthony "Tony" J. Perez, MS Ed**, Associate Director of Graduate Admissions
- **Steven M. Broadway, MS**, Education Program Coordinator

6:02 – 6:07 p.m.

Understanding Interventions (UI) that Broaden Participation in Science Careers

SPEAKER

- **Anthony L. DePass, Ph.D.**, Director, Understanding Interventions that Broaden Participation in Science (UI)

6:10 – 6:20 p.m.

General Q&A Session



CONCURRENT STUDENT LIGHTNING TALKS IV

SESSION 4: SOCIAL AND BEHAVIORAL SCIENCES AND PUBLIC HEALTH AND NEUROSCIENCE

(Recommended for All Attendees)

6:30 – 6:33 p.m.

TSLTNEU-386 Rosanna Burgos Pujols, University of California Irvine

6:35 – 6:38 p.m.

TSLTNEU-387 Coral Castro Rivera, The Salk Institute for Biological Sciences

6:40 – 6:43 p.m.

TSLTSOC-491 Nneoma Madubuike, Clemson University

6:45 – 6:48 p.m.

TSLTSOC-492 Chizuruoke Onuoha, Memorial Sloan Kettering Cancer Center

6:50 – 6:53 p.m.

TSLTSOC-493 Mariam Mahgoub, Memorial Sloan Kettering Cancer Center

6:55 p.m.

Breakout Room Discussions (optional)

SESSION 4: BIOCHEMISTRY AND MOLECULAR BIOLOGY

(Recommended for All Attendees)

6:30 – 6:33 p.m.

TSLTBIO-001 Tiffany-Chau Le, Vanderbilt University

6:35 – 6:38 p.m.

TSLTBIO-002 Delice Katula, University of California, Irvine

6:40 – 6:43 p.m.

TSLTBIO-003 Juan Flores, University of California, Irvine

6:45 – 6:48 p.m.

TSLTBIO-004 Zara Nadeem, Hunter College of the City University of New York

6:50 – 6:53 p.m.

TSLTBIO-005 Christopher Causby, James Madison University

6:55 p.m.

Breakout Room Discussions (optional)

SESSION 4: MICROBIOLOGY

(Recommended for All Attendees)

6:30 – 6:33 p.m.

TSLTMIC-331 Taleah Cooper, US Air Force Academy

6:35 – 6:38 p.m.

TSLTMIC-332 Michael Aguilar, University of North Carolina Wilmington

6:40 – 6:43 p.m.

TSLTMIC-333 Cierra Ord, University of California, Irvine

6:45 – 6:48 p.m.

TSLTMIC-334 Jose Hernandez Santana, University of California, Irvine

6:50 – 6:53 p.m.

TSLTMIC-335 Emily Afriyie, Tufts University

6:55 p.m.

Breakout Room Discussions (optional)



SESSION 4 : CANCER BIOLOGY

(Recommended for All Attendees)

6:30 – 6:33 p.m.

TSLTCAN-076 Drew Laz-Nwokefor, Wake Forest University

6:35 – 6:38 p.m.

TSLTCAN-077 Nicole Arellano, University of Chicago

6:40 – 6:43 p.m.

TSLTCAN-078 Patrick Ihejirika, Broad Institute of Harvard & MIT

6:45 – 6:48 p.m.

TSLTCAN-079 Stephanie Harchenko, University of California, Irvine

6:50 – 6:53 p.m.

TSLTCAN-080 Tammy Yang, Memorial Sloan Kettering Cancer Center

6:55 p.m.

Breakout Room Discussions (optional)

EXHIBITOR GAME NIGHT/LIVE CHAT WITH EXHIBITORS

7:00 – 8:00 p.m.

(Recommended for All Attendees)

DEAF/HARD-OF-HEARING NETWORKING HOUR

8:15 – 9:15 p.m.



Friday, November 12

PROGRAM DIRECTORS CONVERSATION WITH NIGMS LEADERSHIP

11:00 – 11:45 a.m.

LIVE CHAT WITH EXHIBITORS

11:00 – 11:45 a.m.

(Recommended for All Attendees)

SCIENTIFIC KEYNOTE ADDRESS

Noon – 12:30 p.m.

(Recommended for All Attendees)

MODERATOR

- TBD

SPEAKER

- **Akiko Iwasaki, Ph.D.**, Howard Hughes Medical Institute, Chevy Chase, MD

12:30 – 1:00 p.m.

(Recommended for All Attendees)

SPEAKER

- **Ashish K. Jha, M.D., M.P.H.**, Brown University, Providence, RI

LIVE CHAT ON OPPORTUNITIES WITHIN SCIENTIFIC DISCIPLINES

(Recommended for All Attendees)

LIVE CHAT 1

1:15 – 1:45 p.m.

Scientific Disciplines: Social & Behavioral Sciences and Public Health; Neuroscience

(Recommended for All Attendees)

MODERATOR

- **Karen Singer-Freeman, Ph.D.**, University of North Carolina, Charlotte, Charlotte, NC

FACILLITATORS

- **Ebony Glover, Ph.D.**, Kennesaw State University, Kennesaw, GA
- **Ramesh Raghupathi, Ph.D.**, Drexel University, Philadelphia, PA

LIVE CHAT 2

1:15 – 1:45 p.m.

Scientific Disciplines: Microbiology and Immunology

(Recommended for All Attendees)

MODERATOR

- **Alfredo Torres, Ph.D.**, University of Texas Medical Branch, Galveston, TX

FACILITATORS

- **Kellie Ann Jurado, Ph.D.**, University of Pennsylvania, Philadelphia PA
- **Misty Thomas, Ph.D.**, North Carolina Agricultural and Technical State University, Greensboro, NC

LIVE CHAT 3

1:15 – 1:45 p.m.

Scientific Disciplines: Cell Biology; Developmental Biology and Genetics

(Recommended for All Attendees)

MODERATORS

- **Marlene de la Cruz, Ph.D.**, University of California, Irvine, Irvine, CA
- **Brent Berwin, Ph.D.**, The Jackson Laboratory, Bar Harbor, ME

FACILITATORS

- **Jorge Torres, Ph.D.**, University of California Los Angeles, Los Angeles, CA
- **Michelle Juarez**, Howard Hughes Medical Institute, Chevy Chase, MD

LIVE CHAT 4

1:15 – 1:45 p.m.

Scientific Disciplines: Physiology and Pharmacology; Cancer Biology

(Recommended for All Attendees)

MODERATOR

- **Luisel Ricks-Santi, Ph.D.**, Hampton University, Hampton, VA

FACILITATOR

- **Alexandra Colón-Rodríguez, Ph.D.**, University of California, Davis, Davis, CA
- **Francisco J. Sánchez-Rivera, Ph.D.**, Memorial Sloan Kettering Cancer Center, New York City, NY

LIVE CHAT 5

1:15 – 1:45 p.m.

Scientific Disciplines: Engineering, Physics, and Mathematics; Computational and Systems Biology

(Recommended for All Attendees)

MODERATOR

- **Abiraman Srinivasan, M.Phil., Ph.D.**, Portfolio Area Manager, Combat Casualty Care Research Program, United States Army, Ft. Detrick, MD

FACILITATORS

- **Debadyuti Ghosh, Ph.D.**, The University of Texas at Austin, Austin, TX
- **P. Keolu Fox, Ph.D.**, University of California, San Diego, San Diego, CA

LIVE CHAT 6

1:15 – 1:45 p.m.

Scientific Disciplines: Biochemistry and Molecular Biology; Chemistry

(Recommended for All Attendees)

MODERATOR

- **Laura M. Sanchez, Ph.D.**, University of California, Santa Cruz, Santa Cruz, CA

FACILITATORS

- **Saurja DasGupta, Ph.D.**, Harvard University, Cambridge, MA
- **Alanna Condren, Ph.D.**, University of Michigan, Ann Arbor, MI



CONNECT WITH STUDENT PRESENTERS

1:55 – 2:40 p.m.

ePosters: Connect with Student Presenters

(Recommended for All Attendees)

CONNECT WITH EXHIBITORS

2:45 – 3:30 p.m.

Virtual Exhibit Hall & Networking Rooms:

Connect with Exhibitors

(Recommended for All Attendees)

NIGMS TWD-PDO PROGRAM DISCUSSION

(FOLLOW-UP DISCUSSION)

2:45 – 3:30 p.m.

CONCURRENT STUDENT LIGHTNING TALKS V

SESSION 5: SOCIAL AND BEHAVIORAL SCIENCES AND PUBLIC HEALTH

(Recommended for All Attendees)

3:40 – 3:43 p.m.

FSLTSOC-486 Alexis De La Rosa, University of California, Irvine

3:45 – 3:48 p.m.

FSLTSOC-487 Tawanna Brown, Georgia Southern University

3:50 – 3:53 p.m.

FSLTSOC-488 Ying Zi (Jessy) Mei, Memorial Sloan Kettering Cancer Center

3:55 – 3:58 p.m.

FSLTSOC-489 Gabriella Daire, University of Virginia

4:00 – 4:03 p.m.

FSLTSOC-490 Zuley Dominguez, Memorial Sloan Kettering Cancer Center

4:05 p.m.

Breakout Room Discussions (optional)

SESSION 5: PHYSIOLOGY AND PHARMACOLOGY

(Recommended for All Attendees)

3:40 – 3:43 p.m.

FSLTPHY-451 Alejandra Reyes, University of California, Irvine

3:45 – 3:48 p.m.

FSLTPHY-452 Iyinyeoluwa Okulate, University of Maryland Eastern Shore

3:50 – 3:53 p.m.

FSLTPHY-453 Kaley Mitchell, University of California, Irvine

3:55 – 3:58 p.m.

FSLTPHY-454 Melissa-Maria Kulaprazhazhe, New York Medical College

4:00 – 4:03 p.m.

FSLTPHY-455 María Cabrera Echevarría, University of Puerto Rico

4:05 p.m.

Breakout Room Discussions (optional)

SESSION 5: BIOCHEMISTRY AND MOLECULAR BIOLOGY

(Recommended for All Attendees)

3:40 – 3:43 p.m.

FSLTBIO-001 Christy Nguyen, CSU Long Beach

3:45 – 3:48 p.m.

FSLTBIO-002 Devyn Hernandez, University of California, Irvine

3:50 – 3:53 p.m.

FSLTBIO-003 Natalia Taylor, Yale University

3:55 – 3:58 p.m.

FSLTBIO-004 Aidan Gelston, University of California, Irvine

4:00 – 4:03 p.m.

FSLTBIO-005 Christian Clemons, Virginia Commonwealth University

4:05 p.m.

Breakout Room Discussions (optional)

SESSION 5: ENGINEERING, PHYSICS AND MATHEMATICS

(Recommended for All Attendees)

3:40 – 3:43 p.m.

FSLTENG-266 Khari Fletcher, Howard University

3:45 – 3:48 p.m.

FSLTENG-267 Zakora Moore, Washington State University

3:50 – 3:53 p.m.

FSLTENG-268 Alara Blofield, California State University, Long Beach

3:55 – 3:58 p.m.

FSLTENG-269 Sabrina Delva, University of Rhode Island

4:00 – 4:03 p.m.

FSLTENG-270 Eduardo Montano, University of California Irvine

4:05 p.m.

Breakout Room Discussions (optional)

CONCURRENT SCIENTIFIC FLASH TALKS

SESSION 1

Scientific Disciplines: Social & Behavioral Sciences and Public Health; Neuroscience

(Recommended for All Attendees)

MODERATOR

- **Gabriela Manzano Nieves, Ph.D, M.P.A.**, Weill Cornell Medicine, New York, NY

4:25 – 4:40 p.m.

How Can Personality Science Help Us Understand Impacts of the COVID-19 Pandemic

SPEAKER

- **Jordan Booker, Ph.D.**, University of Missouri, Columbia, MO

4:45 – 5:00 p.m.

Neural Circuits for Bidirectional Control of Pain in the Amygdala

SPEAKER

- **Yarimar Carrasquillo, Ph.D.**, National Center for Complementary and Integrative Health, NIH, Bethesda, MD

SESSION 2

Scientific Disciplines: Microbiology; Immunology

(Recommended for All Attendees)

MODERATOR

- **Sean Spencer, M.D., Ph.D.**, Stanford University, Stanford, CA

4:25 – 4:40 p.m.

Cell Signaling Molecules in Human Disease

SPEAKER

- **Saira Bano, Ph.D.**, Jinnah University for Women, Karachi, Pakistan

4:45 – 5:00 p.m.

Sending Cancer-Fighting T Cells to Martial Arts School: The Cell Therapy Revolution

SPEAKER

- **Avery Posey, Jr., Ph.D.**, University of Pennsylvania, Philadelphia, PA

SESSION 3

Scientific Disciplines: Cell Biology; Developmental Biology & Genetics

(Recommended for All Attendees)

MODERATOR

- **Abby Sarkar, Ph.D.**, Stanford University, CA

4:25 – 4:40 p.m.

Cell Organization Leading to Cell Diversity: An Imaging Journey

SPEAKER

- **Blake Riggs, Ph.D.**, San Francisco State University, San Francisco, CA

4:45 – 5:00 p.m.

How to Make a Living, Human, Cardiac Muscle Pump

SPEAKER

- **Brenda Ogle, Ph.D.**, University of Minnesota, Minneapolis, MN

SESSION 4

Scientific Disciplines: Physiology & Pharmacology; Cancer Biology

(Recommended for All Attendees)

MODERATOR

- **Darren Mikael Gordon, Ph.D.**, University of Toledo, Toledo, OH

4:25 – 4:40 p.m.

Non-Alcoholic Fatty Liver Disease and Drug Transporters: What is the Connection?

SPEAKER

- **José Manautou, Ph.D.**, University of Connecticut, Storrs, CT

4:45 – 5:00 p.m.

Race vs. Ancestry in Cancer Research

SPEAKER

- **Melissa Davis, Ph.D.**, Cornell University, Ithaca, NY

SESSION 5

Scientific Disciplines: Engineering, Physics, and Mathematics; Computational & Systems Biology

(Recommended for All Attendees)

MODERATOR

- **Nur M. Shahir, Ph.D.**, Pennsylvania State University, University Park, PA

4:25 – 4:40 p.m.

Using the Microbiome in Orthopedic Biomechanics

SPEAKER

- **Christopher Hernandez, Ph.D.**, Cornell University, Ithaca, NY

4:45 – 5:00 p.m.

How Mathematical Modeling Can Help Improve Cancer Treatment

SPEAKER

- **Stacey Finley, Ph.D.**, University of Southern California, Viterbi, Los Angeles, CA

SESSION 6

Scientific Disciplines: Biochemistry and Molecular Biology; Chemistry

(Recommended for All Attendees)

MODERATOR

- **Christopher Berndsen, Ph.D.**, James Madison University, Harrisonburg, VA

4:25 – 4:40 p.m.

Designing Vaccines to Target Chronic and Infectious Diseases in Native American Communities

SPEAKER

- **Naomi Ruth Lee, Ph.D.**, Northern Arizona University, Flagstaff, AZ

4:45 – 5:00 p.m.

Improving Health with Human Milk

SPEAKER

- **Steven Townsend, Ph.D.**, Vanderbilt University, Nashville, TN



Conferences. Resources. Webinars. Workshops.

 JOURNAL

 INDEX

 LEARN

www.understandinginterventions.org

INTRODUCING

A SOCIAL MEDIA PLATFORM FOR SCIENCE

e-portfolios

training

friends

meetings

recruitment

mentoring



program matching

networking



WHERE SCHOLARSHIP MEETS
PRACTICE TO BROADEN
PARTICIPATION IN SCIENCE

EXHIBITOR SPOTLIGHT III

Featured Exhibitors, to include Q&A

(Recommended for All Attendees)

MODERATOR

- **Tiffani Fonseca, M.B.A.**, American Society for Microbiology, Washington, DC

5:15 – 5:20 p.m.

NIH: National Institute of Environmental Health Sciences (NIEHS)

SPEAKERS

- **Ericka Reid, Ph.D.**, Director, Office of Science Education & Diversity
- **Astrid Haugen, MSEH**, Health Specialist/Genes, Environment & Health Branch

5:22 – 5:27 p.m.

Emory University, Laney Graduate School

SPEAKER

- **Amanda Marie James, Ph.D.**, Associate Dean, Diversity, Inclusion, and Community Engagement, James T. Laney School of Graduate Studies at Emory University

5:29 – 5:34 p.m.

Washington University in St. Louis - Division of Biology and Biomedical Sciences

SPEAKER

- **Joel Dalton**, Director, Diversity, Equity & Inclusion and Student & Alumni Affairs
- **Rosie Jones**, Coordinator, Diversity and Student Affairs

5:36 – 5:41 p.m.

University at Buffalo STEAM & Health Sciences

SPEAKER

- **Anyango Kamina, Ph.D.**, Assistant Dean for Student Development, University at Buffalo (SUNY)

5:43 – 5:48 p.m.

IU School of Medicine Biomedical Science Graduate Programs

SPEAKER

- **Thomas D. Hurley, Ph.D.**, Associate Dean for Research and Graduate Education, IU School of Medicine Biomedical Science Graduate Programs

5:50 – 5:55 p.m.

Lehigh University

SPEAKER

- **Vassie Ware, Ph.D.**, Professor
Co-Director: HHMI Bioscience program, Distance Education program

5:57 – 6:02 p.m.

UNC Chapel Hill SOM Biomedical Graduate Education

SPEAKER

- **Donita Robinson, Ph.D.**, Associate Dean for Graduate Education
- **Ashalla Freeman, Ph.D.**, Director of Diversity Affairs and IMSD

6:02 – 6:07 p.m.

Northwestern University

SPEAKER

- **Rashaad Barnett, MEd.**, Assistant Director of Diversity and Inclusion

6:10 – 6:20 p.m.

General Q&A Session

CONCURRENT PROFESSIONAL DEVELOPMENT SESSIONS

SESSION 1

6:30 – 7:00 p.m.

Goal Setting and Time Management

(Recommended for Community College and Undergraduate Students, and Post-Baccalaureates)

MODERATOR

- **Nicole T. Quintus, Graduate Student**, University of Arizona, Phoenix, AZ

SPEAKER

- **Sandra Murray, Ph.D.**, University of Pittsburgh, Pittsburgh, PA

SESSION 2

6:30 – 7:00 p.m.

Mental Health and Wellness: The Intersection of our STEM Research and Personal Identities

(Recommended for Community College and Undergraduate Students, and Post-Baccalaureates)

SPEAKERS

- **D'Anne Duncan, Ph.D.**, University of California, San Francisco, San Francisco, CA
- **Mallory Rice, Ph.D.**, California State University San Marcos, San Marcos, CA
- **Erica Sanchez, Ph.D.**, San Francisco State University, San Francisco, CA
- **Becky Pizer, Psy.D.**, Wright Institute, Berkeley, CA

SESSION 3

6:30 – 7:00 p.m.

How to be an Effective Self-Advocate

(Recommended for Graduate Students and Postdoctoral Scientists)

MODERATOR

- **Stacy Zamora, Graduate Student**, California State University Dominguez Hills, Carson, CA

SPEAKER

- **Shoba Subramanian, Ph.D.**, University of Michigan, Ann Arbor, MI

SESSION 4

6:30 – 7:00 p.m.

Cultivating Equitable Ecosystems in Academia: A session for faculty, future faculty, and academic leaders

(Recommended for Nonstudents)

SPEAKERS

- **Sherilynn Black, Ph.D.**, Duke University, Durham, NC
- **Beronda Montgomery, Ph.D.**, Michigan State University, East Lansing, MI

EXHIBITOR GAME NIGHT/LIVE CHAT WITH EXHIBITORS

7:00 – 8:00 p.m.

(Recommended for All Attendees)

LGBTQIA+ NETWORKING HOUR

8:15 – 9:15 p.m.

Saturday, November 13

CONCURRENT PROFESSIONAL DEVELOPMENT SESSIONS

SESSION 1

Noon – 12:45 p.m.

M.D.-Ph.D., is it right for me?

(Recommended for Community College and Undergraduate Students, and Post-Baccalaureates)

SPEAKERS

- **Brandon Dale, B.S.**, Mount Sinai School of Medicine, New York, NY
- **Elizabeth Juarez Diaz, B.S.**, Washington University at St. Louis, St. Louis, MO
- **Damani Piggott, M.D., Ph.D.**, The Johns Hopkins School of Medicine, Baltimore, MD

Cancer Prevention Fellowship Program

Learn more about the program and apply at cpfp.cancer.gov.

Get support for postdoctoral research, plus:

- Leadership Training
- Competitive Stipends
- Sponsored opportunity to earn MPH
- Mentored research opportunities

LEARN MORE!

cpfp.cancer.gov 

CPFPCoordinator@mail.nih.gov 



Preparing the Next Generation of Diverse Leaders in Biomedical Science

WWW.USF.EDU

SESSION 2

Noon – 12:45 p.m.

The Gap Year: Creating A Strategy to Pursue Your Dreams

(Recommended for Community College and Undergraduate Students, and Post-Baccalaureates)

MODERATOR

- **Daniela Sanchez, Graduate Student**, San Francisco State University, San Francisco, CA

SPEAKER

- **Tameka Clemons, Ph.D.**, Meharry Medical College, Nashville, TN

SESSION 3

Noon – 12:45 p.m.

Picking the Perfect Ph.D. Program for You: Why Choose a School with a T32?

(Recommended for Students Interested in the Ph.D. Track)

MODERATOR

- **Danielle Sanchez, Graduate Student**, San Francisco State University, San Francisco, CA

SPEAKER

- **Sharon Milgram, Ph.D.**, National Institutes of Health, Bethesda, MD

SESSION 4

Noon – 12:45 p.m.

Leveraging CUREs to advance research of graduate students and early career post-docs

(Recommended for Graduate Students and Postdoctoral Scientists)

SPEAKERS

- **Christopher Beck, Ph.D.**, Emory University, Atlanta, GA
- **Nicole Gerardo, Ph.D.**, Emory University, Atlanta, GA
- **Jacoby Robinson, Graduate Student**, Emory University, Atlanta, GA
- **Anna Zelaya, Ph.D.**, Emory University, Atlanta, GA

SESSION 5

Noon – 12:45 p.m.

Measure your Trainees' Successful Progress in Your Program

(Recommended for Nonstudents)

SPEAKERS

- **Sherilynn Black, Ph.D.**, Duke University, Durham, NC
- **Victoria Freedman, Ph.D.**, Albert Einstein College of Medicine, New York, NY
- **Nancy Schwartz, Ph.D.**, University of Chicago, Chicago, IL
- **Davie Van Vector, Ph.D.**, Harvard University, Cambridge, MA

FEATURED CAREER PATHWAY SPOTLIGHT

1:00 – 1:45 p.m.

(Recommended for All Attendees)

Clinical Trialist: A Critical Career Path to Achieve Health Equity

MODERATOR

- **Stacy Zamora, Graduate Student**, California State University Dominguez Hills, Carson, CA

SPEAKER

- **Cherié Butts, Ph.D.**, Biogen, Cambridge, MA

LIVE CHAT BY CAREER TRACKS

LIVE CHAT 1

1:55 – 2:40 p.m.

Track: Government

(Recommended for All Attendees)

FACILITATOR

- **Laurie Stepanek, Ph.D.**, National Institute of General Medical Sciences, NIH, Bethesda, MD

Conferences. Resources. Webinars. Workshops.

U JOURNAL U INDEX U LEARN

www.understandinginterventions.org

INTRODUCING A SOCIAL MEDIA PLATFORM FOR SCIENCE

networking *e-portfolios*
friends *training*



meetings *mentoring*
program matching *recruitment*



WHERE SCHOLARSHIP
MEETS PRACTICE TO
BROADEN
PARTICIPATION IN
SCIENCE



Out of Many, One Emory

Join our diverse and inclusive academic community, where world-class scholars in nine colleges and schools harness their intellect and imagination to examine and address the 21st-century's most important challenges.

Emory is in the global, progressive city of Atlanta, birthplace of the civil rights movement and a business and cultural powerhouse. At Emory, inspired faculty and engaged students conduct research and scholarship across the humanities, sciences, and health care to help inspire change in their communities and in the world.

Bring your unique voice and excellence to Emory.



LIVE CHAT 2

1:55 – 2:40 p.m.

Track: Industry

Internships at Biogen & Submitting a Strong Application

(Recommended for All Attendees)

FACILITATOR

- **Tom Kleber, M.S.**, Biogen, Cambridge, MA

LIVE CHAT 3

1:55 – 2:40 p.m.

Track: Entrepreneurship

(Recommended for All Attendees)

LIVE CHAT 4

1:55 – 2:40 p.m.

Track: Academia

(Recommended for All Attendees)

EXHIBITOR SPOTLIGHT IV

Featured Exhibitors, to include Q&A

(Recommended for All Attendees)

MODERATOR

- **Christopher Skipwith, Ph.D.**, American Society for Microbiology, Washington, DC

2:45 – 2:50 p.m.

St. Jude's Children's Research Hospital Graduate School of Sciences

SPEAKER

- TBD

2:52 – 2:57 p.m.

Scripps Research Institute

SPEAKER

- **Dawn Eastmond, Ph.D.**, Director Graduate Studies, Scripps Research

2:59 – 3:04 p.m.

Michigan State University Graduate School

SPEAKER

- **Steven Thomas**, Program Manager for AGEP, CAFFE, and SROP Program, MSU Graduate School

3:06 – 3:11 p.m.

Morehouse College-Public Health Sciences Institute

SPEAKER

- **NyThea C. Tolbert, Ph.D.**, Assistant Director, Morehouse College - Public Health Sciences Institute's Project Imhotep

3:13 – 3:18 p.m.

University of Rochester

SPEAKER

- **Kandice King**, Director of Grad Enrollment, University of Rochester

3:20 – 3:30 p.m.

General Q&A Session

CONCURRENT PROFESSIONAL DEVELOPMENT SESSIONS

SESSION 1

3:45 – 4:30 p.m.

Be a star! How to create a competitive Graduate School application

(Recommended for Community College and Undergraduate Students, and Post-Baccalaureates)

SPEAKERS

- **John Augusto, Ph.D.**, Georgia State University, Atlanta, GA
- **Carlos Grijalva, Ph.D.**, University of California, Los Angeles, CA

SESSION 2

3:45 – 4:30 p.m.

Reframing Disability in STEM

(Recommended for Community College and Undergraduate Students, and Post-Baccalaureates)

SPEAKERS

- **Peter J. Grahn, Ph.D.**, Mayo Clinic, Rochester, MN
- **Alexis S. Mobley, M.S.**, University of Texas MD Anderson Cancer Center, Houston, TX
- **Jennifer Tudor, Ph.D.**, St. Joseph’s University, Philadelphia, PA
- **Lauren Ullrich, Ph.D.**, National Institute of Neurological Disorders and Stroke, NIH, Bethesda, MD

SESSION 3

3:45 – 4:30 p.m.

Money, Mentorship, and Making Moves: Navigating NIH Blueprint and BRAIN Training Awards

(Recommended for Graduate Students and Postdoctoral Scientists)

SPEAKERS

- **James Churchill, Ph.D.**, National Institute of Mental Health, NIH, Bethesda, MD
- **Michelle Jones-London, Ph.D.**, National Institute of Neurological Disorders and Stroke, NIH, Bethesda, MD

- **Marguerite Matthews, Ph.D.**, National Institute of Neurological Disorders and Stroke, NIH, Bethesda, MD
- **Ashlee Van’t Veer, Ph.D.**, National Institute of Mental Health, NIH, Bethesda, MD

SESSION 4

3:45 – 4:30 p.m.

NIGMS Research Training: An overview of NIGMS institutional research training programs and research funding opportunities for faculty

(Recommended for Nonstudents)

SPEAKERS

- **Edgardo Falcón-Morales, Ph.D.**, National Institute of General Medical Sciences, NIH, Bethesda, MD
- **Shakira Nelson, Ph.D.**, National Institute of General Medical Sciences, NIH, Bethesda, MD

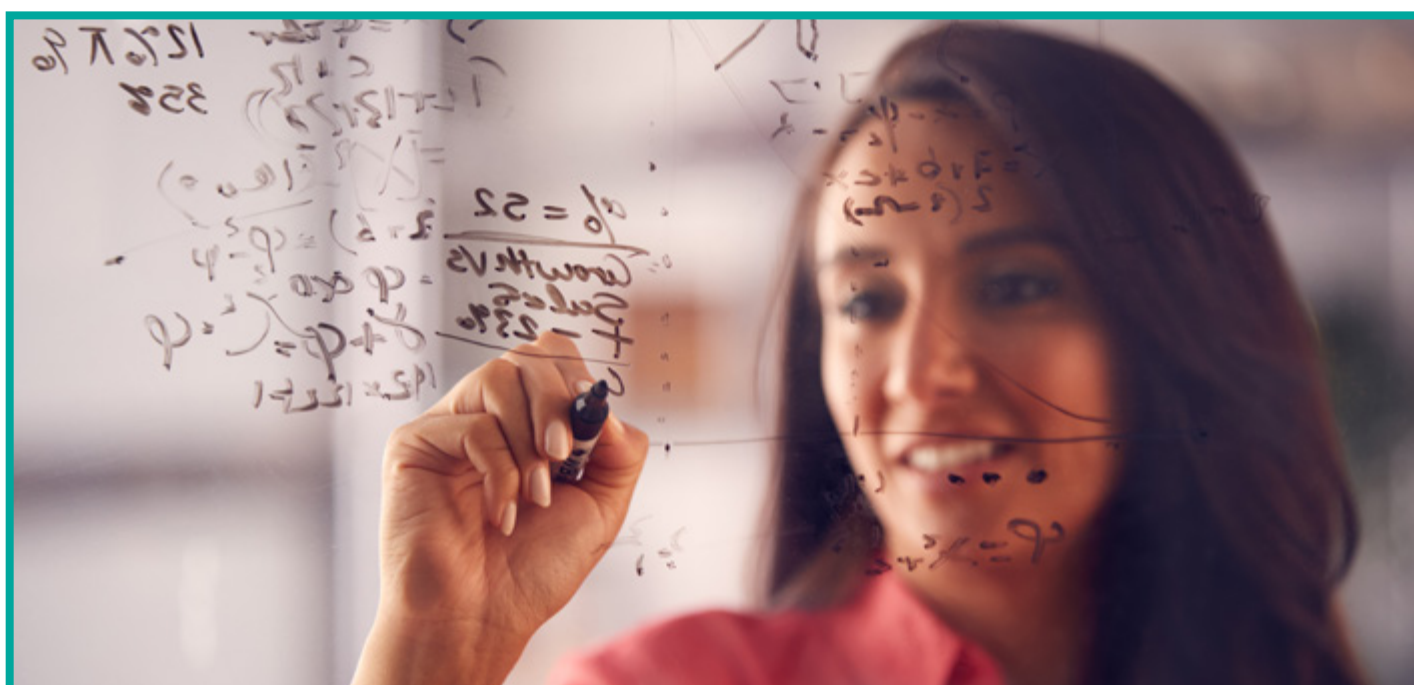
4:45 – 5:30 p.m.

Presentation Awards and Closing Remarks

(Recommended for All Attendees)

PRESENTERS

- **Avery August, Ph.D.**, Cornell University, Ithaca, NY
- **Irene Hulede**, American Society for Microbiology, Washington, DC





Out of Many, One Emory

Join our diverse and inclusive academic community, where world-class scholars in nine colleges and schools harness their intellect and imagination to examine and address the 21st-century's most important challenges.

Emory is in the global, progressive city of Atlanta, birthplace of the civil rights movement and a business and cultural powerhouse. At Emory, inspired faculty and engaged students conduct research and scholarship across the humanities, sciences, and health care to help inspire change in their communities and in the world.

Bring your unique voice and excellence to Emory.



Training future leaders in medicine and biomedical sciences

MORNINGSIDE
GRADUATE SCHOOL OF
BIOMEDICAL SCIENCES

T.H. CHAN
SCHOOL OF MEDICINE



UMass Chan
MEDICAL SCHOOL

Contact Information

Project Director and Plenary Sessions

Irene Hulede
(202) 942-9295
ihulede@asmusa.org

Conference Program: Scientific and Professional Development Sessions

Tiffani Fonseca
(202) 942-9283
tfonseca@asmusa.org

Student Presentations & Judges Program

Leah Dixon
(202) 942-9348
ldixon@asmusa.org

ABRCMS Online

Christopher Skipwith
cskipwith@asmusa.org

Exhibits & Sponsorship

abrcmsexhibits@asmusa.org

Registration

abrcms@experient-inc.com

ABRCMS Mailing Address

ABRCMS
ASM Education Department
1752 N Street, N.W.
Washington, DC 20036



Managed by
**AMERICAN
SOCIETY FOR
MICROBIOLOGY**

Funded by



National Institute of
General Medical Sciences

Visit www.abrcms.org for more information