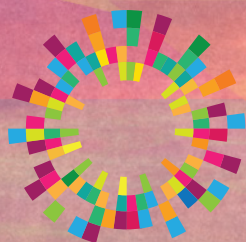


Annual Biomedical Research Conference for Minority Students

Final Program



ABRCMS 2017

PHOENIX, ARIZONA

November 1- 4, 2017

Promoting Change and Transformation



Managed by
**AMERICAN
SOCIETY FOR
MICROBIOLOGY**





BOISE STATE UNIVERSITY

COLLEGE OF ARTS AND SCIENCES

Biomolecular Sciences Graduate Programs



Come see us!

Booth 1116



Application Deadline:

December 19th



ASSISTANTSHIPS:

The program offers competitive Assistantships for qualified students including an annual stipend of **\$25,000**, plus full tuition and health insurance.

The Ph.D. in Biomolecular Sciences focuses on:

- Study of the complex nature of the molecules of biological systems as they relate to normal homeostatic and disease processes
- Development of treatments for diseases as well as preventative measures such as vaccines
- Research and development of innovative devices and methodologies in biomolecular sciences

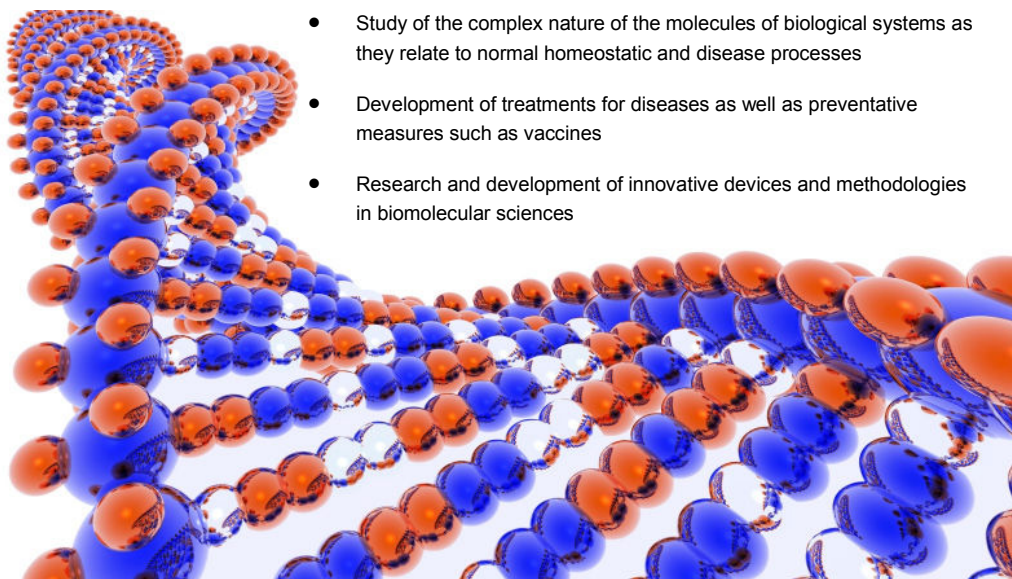


Table of Contents

Conference Welcome	2
(Avery August, Ph.D.)	
Greetings	3
(Jon Lorsch, Ph.D., Alison Gammie, Ph.D.)	
Important Conference Information	4
ABRCMS Sponsors	7
ABRCMS Plenary Speakers	8
Concurrent Scientific Speakers	9
Program	10-22
Poster Presentation by Scientific Discipline	23
Student Oral Presenters Listing	24-34
Exhibit Hall Passport	35
Exhibitor Floor Plan	38
Exhibitor Listing & Booth Numbers	40-46

Join the conversation!

#ABRCMS

Download the official conference mobile app for the most up-to-date and detailed information.



facebook.com/abrcms



instagram.com/abrcms



twitter.com/abrcms



Welcome

from Avery August



On behalf of the Annual Biomedical Research Conference for Minority Students (ABRCMS), I would like to welcome you to Phoenix, Arizona, and the 2017 meeting. This is the 17th year that we have been organizing and hosting this conference, and this year has certainly been one of change, and of transformation. We have seen change in administration, changes in societal engagement of scientists, and changes in the meeting itself. These changes make it even more imperative that ABRCMS exists. I am heartened and extremely proud that ABRCMS continues to be a transformational experience for our students.

It is therefore fitting that the theme of our meeting this year, “Promoting Change and Transformation,” focuses on positive change and transformation, both in what is happening around us, and in our students. ABRCMS is extremely proud of the role we play in transforming underrepresented students for a career STEM research. Students, faculty, exhibitors, and visitors come to ABRCMS and are transformed. Students, because we seek to inspire them join us in diversifying the biomedical research workforce, now more than ever. It is arguably one of the most exciting times for biomedical science, with the most promise to improve health, but a diverse workforce is needed to transform this promise into advances that reduce health disparities and address the effects of environmental and climate change that impact our communities. Diverse voices and backgrounds allow fresh new thinking that will lead to breakthroughs that will accomplish this. Our students will be the ones making these contributions, with ABRCMS being the start for many, given its role as arguably one of the first scientific meetings for most of the students attending.

The remarkable program has been especially curated to transform. For students, you are here to be transformed. You have done the research, prepared your posters and presentations, and now you join us as colleagues. We encourage you to take in as much as you can in this transformation. For the faculty mentors and advisors, you have worked with your students, supporting their research, and we all join you in ensuring that they fully participate in the program and experience this transformation. For the presenters, we look forward to hearing some of the best science, and to be inspired by your words; and for the exhibitors, we look forward to your full engagement with students. This is ABRCMS! Network, attend the stimulating talks on the most recent work in the biomedical and behavioral sciences, and fully engage in our discussions of the critical issues facing our community of minority scholars, and of our scientific communities.

Our hearts go out to our colleagues, students, and their families in areas affected by the devastating hurricanes, many of whom may not be able to join us this year. However, we are extremely proud of the hard work the ABRCMS Steering Committee, the ASM staff, the exhibitors (make sure to visit the booths!), and many volunteers have done to make this meeting possible. They have devoted significant time and effort preparing the program, reviewing abstracts, planning and preparing the location to host your visit, preparing materials, setting up booths, and making sure that everything is just right. This, all so that your experience is one that is transformational. I would like to thank them all for their hard work in making this meeting a success. We also are extremely grateful for the continued support of Division of Training, Workforce Development, and Diversity at the National Institute of General Medical Sciences, NIH, whose funding has continued to make ABRCMS what it is.

With my warmest wishes,

Avery August, Ph.D.
Chairperson, ABRCMS



Greetings

from NIH



On behalf of the National Institutes of Health's National Institute of General Medical Sciences, we'd like to welcome you to the 2017 Annual Biomedical Research Conference for Minority Students. We're very proud to support this meeting, which brings together a community of outstanding students and scientists for stimulating discussions of research, careers, and more.

This meeting is one element of our many activities in the areas of training, workforce development, and diversity. Our programs range from the undergraduate level to the doctorate and beyond, and they include the Maximizing Access to Research Careers, Research Initiative for Scientific Enhancement, Initiative for Maximizing Student Development, and Postbaccalaureate Research Education programs. Many of you at this meeting are current or former program participants. Our programs also include institutional and faculty development through the Native American Research Centers for Health, the Support of Competitive Research Programs, as well as the Building Infrastructure Leading to Diversity initiative. Additionally, the National Institutes of Health supports the National Research Mentoring Network to enhance the training and career development of individuals from diverse backgrounds who are pursuing biomedical research careers. For those of you who are attending as mentors and sponsors, we truly appreciate your dedication and many contributions to your students and our shared goals.



For those of you still in training, we hope that your involvement in this meeting further inspires and motivates you to pursue research careers and leadership roles in biomedical science. During your time here, you will gain important allies for your future: a community of peers who will become your colleagues and friends as well as a network of scientists and mentors who are deeply committed to your success in pursuit of a research doctorate and a biomedical career.

We encourage you to make the most of the meeting and take every advantage of the resources and opportunities it offers to help you prepare for the next stages of your research career. We look forward to seeing your presentations and talking to you over the course of the next few days.

Sincerely,

Jon R. Lorsch, Ph.D.

Director
National Institute of General Medical Sciences
National Institutes of Health

Alison Gammie, Ph.D.

Director
Division of Training, Workforce Development, and Diversity
National Institute of General Medical Sciences
National Institutes of Health

Important Conference Information

Conference Orientation for Undergraduate and Postbaccalaureate Students

Your ABRCMS orientation will help you maximize your learning and networking opportunities throughout the conference. Orientation will be held on Thursday, November 2, from 8:00 a.m. to 9:00 a.m.

ABRCMS Launches Mobile App

Mobile App at ABRCMS! Get the latest conference program, exhibitor information, conference maps and much more at your fingertips. Search for ABRCMS in your app store.

Judges Needed

Active researchers in all 12 scientific disciplines are needed to serve as judges for the ABRCMS Student Presentation Program. To volunteer as a judge, visit the judge's lounge located next to registration.

Meal Plan Ticket

The new ABRCMS grant states that registration and meals must be uncoupled. If you did not purchase a meal plan ticket prior to arriving at the conference, you are still encouraged to participate in networking and plenary sessions during meal times. You may purchase food at any convention center food outlet and participate in the sessions. Theater seating will be provided for those who don't participate in the meal plan.

Awards Banquet & Ceremony

The Awards Banquet & Ceremony is Saturday, November 4, from 7:30 p.m. to 9:45 p.m. The ceremony will begin promptly at 8:30 p.m. You can still participate in the awards ceremony even if you did not purchase the meal plan. Theater seating will be available to those not participating in the meal plan.

Free Wi-Fi at ABRCMS

Good news! Free Wi-Fi is available in the exhibit hall, session rooms, and convention center hallways. This service has been brought to you by a generous contribution from the American Society for Microbiology.

Name Badge Policy & Badge Replacement

All ABRCMS attendees are required to wear conference badges onsite at all times. Badges give you access to sessions, the exhibit hall, and workshops. It is your responsibility to ensure that you have your badge at all times. There is a charge of \$25 for badge replacement. No exceptions will be made.

Evaluation

We are trying something new! This year we are implementing real time evaluation during sessions. Please take a few minutes to complete your evaluation at the end of each session you attend. A post conference evaluation will be emailed to all attendees following the conference. We value your feedback, and every completed evaluation helps us improve future conferences.

Cell Phone Usage

Out of consideration for your ABRCMS colleagues, all cell phones must be turned off in session rooms.

Networking with Disciplinary Societies

Networking sessions with disciplinary societies will be held on Wednesday, November 1, from 4:45 to 5:45 p.m. Led by professional society members, these informal sessions offer a forum for small-group discussions focused on the student activities and career pathways offered by societies. All ABRCMS exhibitor and faculty attendees who are professional society members are strongly encouraged to attend.

Gateway to the Future: Career Paths in the Biomedical Sciences, STEM Disciplines, and Behavioral Sciences Thursday, November 2, 8:00 p.m. – 9:30 p.m.

In this session, research scientists from a variety of career sectors will engage students in small group discussions focused on "a day in the life of a research scientist." Scientists will discuss their career pathways and educational backgrounds, what they enjoy about their work, and their strategies for professional and personal life balance. Career sectors include pharma/

biotechnology/industry, media/communications, research intensive academic/staff scientist, undergraduate liberal arts academic/community college, M.D.-Ph.D. in academic health center, and government/policy/foundation/law.

Photo Policy

By registering for ABCRMS, you agree to allow ASM/ABRCMS to use any photos taken of you during the conference in news media, website, publications, articles, marketing pieces, etc. In order to protect data shared during presentations, no photos may be taken of posters or scientific session slides at ABCRMS.

NEW!

Exhibit Hall Passport

Participate in the inaugural exhibit hall passport program to win prizes. See page 35 for details.

Dress Code

ABRCMS attendees are expected to dress professionally for all conference activities. Student attendees should be especially mindful that they are at the beginning of their careers and first impressions are critical.

Rooms

Exam Room - **Convention Center Room 231 A**

Poster Presentation Practice Room -

Convention Center Room 227 AB

Oral Presentation Practice Room -

Convention Center Room 227 C

Speaker Ready Room -

Convention Center Room 125 A

Child Care Room - **Convention Center Room 231 C**

First Aid Room - **Beside Registration**

Lactation Room - **Convention Center Room 231B**

Sheraton Study Room - **Cave Creek and Desert Sky**

Hyatt Study Room - **Sundance and Gilbert**

Renaissance Study Room - **Pima**



Important Conference Information

NEW!

Presentation Practice and Peer Mentoring Sessions (Sponsored in Partnership with FASEB)

(Recommended for student presenters)

The FASEB MARC Program will sponsor poster/oral presentation practice and peer mentoring sessions for students presenting at ABRCMS 2017. These practice sessions are scheduled for 30-minute periods (see days/times below.)
Poster Presentation Practice Room - **Room 227AB**
Oral Presentation Practice Room - **Room 227C**

Practice Room Hours:

Wednesday, November 1: 9:00 a.m. – 10:00 p.m.

Thursday, November 2: 7:00 a.m. – 10:30 p.m.

Friday, November 3: 7:00 a.m. – 10:00 p.m.

Presentation Practice Mentors

Tyasha Burks, Ph.D.

Bowie State University

Felicia Emery, Ph.D.

St. Charles Community College

Kamilah Grant, Ph.D.

Tuskegee University

Mario Izaguirre, Ph.D.

Northern New Mexico College

Oliver Jenkins, M.S.

Virginia State University

L'Aurelle Johnson, Ph.D.

University of Minnesota

Michelle Juarez, Ph.D.

City College of New York

LeeCole Leggette, Ph.D.

Pharmavite LLC

Shaun Logan, Ph.D.

Texas A&M University College of Dentistry

Noraida Martinez-Rivera, Ph.D.

The University of Kansas

Melissa Mason, Ph.D.

Alcorn State University

Kimberly Mulligan, Ph.D.

Auburn University

Chloe Poston, Ph.D.

The Leadership Alliance

Kanika Pulliam, Ph.D.

American Society of Human Genetics

Teresa Ramirez, Ph.D.

American Association of Medical Colleges

Jayne S. Reuben, Ph.D.

Texas A&M University College of Dentistry

Sherri-Gae Scott, Ph.D.

American Gastroenterological Association

Kennie Shepherd, Ph.D.

Morehouse School of Medicine

NEW!

Mentoring Hubs and Coaching Sessions

(Recommended for all students)

Everyone agrees that we need multiple mentors to help us develop as scientists and professionals, but finding mentors and forming productive mentoring relationships can be difficult. Come discuss the ins and outs of mentoring, within and outside the research environment. Several mentors have been identified to host a table and provide one-on-one coaching during exhibit hall hours:

Friday, November 3

Session Time: 3:30 p.m. – 4:15 p.m.

Group Coaching Time: 4:30 p.m. – 5:30 p.m.

Saturday, November 4

Session Time: 10:00 a.m. – 10:45 a.m.

Group Coaching Time: 11:00 a.m. – 12:00 p.m.

2017 ABRCMS Mentors

Howard G. Adams, Ph.D.

Howard G. Adams and Associates

Steven Lee, Ph.D.

University of California, Davis

Beronda Montgomery, Ph.D.

Michigan State University

Amy Maki, Ph.D.

A.O. Maki & Associates

Marcus Huggans, Ph.D.

GEM Fellowship

Marquitta Qualls, Ph.D.

Entropia Consulting

Renetta Tull, Ph.D.

University of Maryland Baltimore County

ABRCMS would like to recognize the following universities and organizations for their support.

Major Conference Sponsors:



AMERICAN SOCIETY FOR MICROBIOLOGY



National Institute of General Medical Sciences

Platinum Sponsors

- American Chemical Society, Department of Diversity Programs
- FASEB

Gold Sponsors

- Genentech
- New York University School of Medicine, Sackler Institute
- Novartis Institutes for BioMedical Research, Diversity & Inclusion
- Society of Toxicology
- University of Alabama at Birmingham
- University of South Florida - Alfred P. Sloan Foundation University Center of Exemplary Mentoring/ Bridge to the Doctorate Program

Silver Sponsors

- Columbia University Medical Center, Coordinated Doctoral Program in Biomedical Sciences
- Keystone Symposia on Molecular and Cellular Biology, Diversity in Life Science Programs
- American Association of Immunologists
- American Heart Association/ American Stroke Association, Health Equity
- American Physiological Society (APS)
- American Society for Biochemistry & Molecular Biology
- Biophysical Society, Committee for Inclusion and Diversity
- St. Jude Children's Research Hospital
- Stanford University, Office of Graduate Education, Programs and Diversity

- University of Kansas
- University of Minnesota, Biomedical Science Graduate & Undergraduate Programs
- University of Minnesota, Medical Scientist Training Program (M.D./Ph.D.)
- Weill Cornell Graduate School of Medical Sciences

Bronze Sponsors

- Society for Developmental Biology (SDB)
- Society for Neuroscience
- University of Wisconsin-Madison
- Boise State University, Biomolecular Sciences Ph.D. Program
- Medical College of Wisconsin (MCW) Graduate School & MSTP
- Ross University School of Medicine
- University of Virginia, Biomedical Sciences



Wednesday, November 1



7:45 p.m. – 8:30 p.m.

*A Case for Climate Justice Now:
Why Equity Matters*

Robert D. Bullard, Ph.D.
Professor of Urban Planning and
Environmental Policy,
Texas Southern University,
Houston, TX

Friday, November 3



9:15 a.m. – 10:15 a.m.

*Race, Class, and Government
Services: How We Got Here, How
We Move Forward*

Ian F. Haney López
Earl Warren Professor of Public
Law and Director, Racial Politics
Project, University of California,
Berkeley

Thursday, November 2



12:45 p.m. – 1:45 p.m.

*From Monitoring Microbes in the
International Space Station to
Building Houses on Mars: A Path
that will Require the Contributions
of a Diverse Community*

**Monserrate (Monsi) C. Román,
M.S.**
Program Manager, NASA Space
Station, Centennial Challenges
Office



12:45 p.m. – 1:45 p.m.

*Public Health and Science,
Technology, Engineering and
Mathematics*

**Hazel D. Dean, MPH, ScD, DrPH
(hon), FACE**
Deputy Director, National Center
for HIV/AIDS, Viral Hepatitis, STD,
and TB Prevention, Centers for
Disease Control and Prevention

Saturday, November 4



12:45 p.m. – 1:45 p.m.

*Becoming Dr. Q: An American
Dream Like No Other/Making
the Case for Careers in Science,
Technology, Engineering and Math*

**Alfredo Quiñones-Hinojosa,
M.D.**
Chair of Neurosurgery, Mayo
Clinic

“My overall experience at ABRCMS 2016 was beyond what I expected. The peers and colleagues I met helped inspire me to continue to pursue a scientific career, and aim for a Ph.D. The workshops were also very helpful and eye opening.”

Friday, November 3 | 8:00 a.m. – 9:00 a.m.



Protein Structures: Producing, Using, and Teaching about Life's Building Blocks

Krystle J. McLaughlin, Ph.D.
Assistant Professor, Vassar College



Precision Medicine Research: Where Genomics Meets Big Data Biomedical Informatics

Dana Crawford, Ph.D.
Associate Professor of Population and Quantitative Health Sciences, Case Western Reserve University



Protein Structures: Producing, Using, and Teaching about Life's Building Blocks

Shuchismita Dutta, Ph.D.
Assistant Research Professor, Rutgers University



Investigating the Interaction between Arginine 8 Methylation and Serine 10 Phosphorylation in Histone H3

Cecilia Zurita-Lopez, Ph.D.
Assistant Professor, California State University, Los Angeles



Friend or Foe: Neuroimmune Responses in the Brain

Edjah Nduom, M.D.
Chief, Surgical Neurology Branch, National Institute of Neurological Disorders and Stroke, National Institutes of Health



A Tale of Two Metals

Michael Johnson, Ph.D.
Assistant Professor, University of Arizona, Tucson, AZ



Friend or Foe: Neuroimmune Responses in the Brain

Candice Brown, Ph.D.
Assistant Professor, West Virginia University



Imaging Mass Spectrometry Reveals Early Events in Cancer and Microbial Colonization of Hosts (Sponsored by the American Society for Microbiology)

Laura Sanchez, Ph.D.
Assistant Professor, University of Illinois, Chicago



The Toxic Sins Of Our Ancestors (Sponsored by the Society of Toxicology)

Patrick Allard, Ph.D.
Assistant Professor, University of California, Los Angeles



Cell Engineering and Biomaterial Strategies for Tissue Engineering

Josephine Allen, Ph.D.
Assistant Professor, University of Florida



Wednesday, November 1

12:00 p.m. – 8:00 p.m.
Registration Open

3:00 p.m. – 8:00 p.m.
Exhibit Setup

2:00 p.m. – 6:00 p.m.
Concurrent Professional Development Sessions

2:00 p.m. – 6:00 p.m.
Session 1 | Room 224 A

Do You Play Fair? A Workshop About Bias in America

(Recommended for graduate students, postdoctoral scientists, faculty, program directors, and exhibitors)

Christine Pribbenow, Ph.D., University of Wisconsin–Madison, Madison, WI
Percy Brown, Jr., M.S.Ed., University of Wisconsin–Madison, Madison, WI

2:00 p.m. – 2:45 p.m.
Session 2 | Room 121 ABC

ABRCMS Student Awardees Orientation

(This orientation is mandatory for all ABRCMS travel awardees. Guidelines and conference expectations will be discussed.)

3:00 p.m. – 4:30 p.m.
**Concurrent Professional Development Sessions
(5 session options)**

3:00 p.m. – 4:30 p.m.
Session 1 | Room 121 ABC

Presentation Techniques: How to Make Effective Poster and Oral Presentations

(Recommended for first-time presenters and non-presenters)

Shelley Payne, Ph.D., University of Texas at Austin, Austin, TX

3:00 p.m. – 4:30 p.m.
Session 2 | Room 122 ABC

Graduate Student Life: Perspectives of Graduate Students

(Recommended for undergraduate and post baccalaureates)

Nicquet Blake, Ph.D., University of Texas at San Antonio Health Science Center, San Antonio, TX

3:00 p.m. – 4:30 p.m.
Session 3 | Room 226 ABC

The A to Z of Networking

(Recommended for all student attendees)

Tojan Rahhal, Ph.D., Alliance Professional Development, Columbia, MO

3:00 p.m. – 4:30 p.m.

Session 4 | Room 229 A

Entering Mentoring: Research Mentor Training for Faculty Working with Undergraduates

(Recommended for faculty)

Steven Lee, Ph.D., University of California, Davis, CA

Kelly Diggs-Andrews, Ph.D., Diggs-Andrews Consulting, LLC, Ashburn, VA

3:00 p.m. – 4:30 p.m.

Session 5 | Room 229 B

Strategies for Writing “Competitive” Proposals at Small Colleges and Universities

(Recommended for postdoctoral scientists and faculty)

Mark Melton, Ph.D., Saint Augustine’s University, Raleigh, NC

4:45 p.m. – 5:45 p.m.

Concurrent Professional Development Sessions (2 session options)

4:45 p.m. – 5:45 p.m.

Session 1

Networking in Your Scientific Discipline (All Disciplines)

(Recommended for all attendees)

Biochemistry and Molecular Biology: **Room 128 AB**

Chemistry: **Room 221 C**

Cancer Biology: **Room 127 C**

Cell Biology: **Room 127 B**

Computational Biology & Systems Biology:

Room 222 C

Developmental Biology and Genetics: **Room 127 A**

Engineering, Physics, and Mathematics: **Room 126 C**

Microbiology: **Room 131 AB**

Immunology: **Room 122 ABC**

Neuroscience: **Room 222 AB**

Physiology: **Room 124 AB**

Social and Behavioral Sciences & Public Health:

Room 129 AB

4:45 p.m. – 5:45 p.m.

Session 2 | Room 226 ABC

The Science of Goal-Setting

(Recommended for postdoctoral scientists, faculty, exhibitors, and program directors)

Glenn E. Daniels II, Stone Publishers, Denver, CO

6:30 p.m. – 7:15 p.m.

Dinner

North Ballroom

7:15 p.m. – 7:45 p.m.

Conference Welcome

North Ballroom

Conference Overview

John Fitzgerald Gates, Ph.D., Criticality Management Consulting, New York, NY

Opening Remarks

Avery August, Ph.D., Cornell University College of Veterinary Medicine, Ithaca, NY

Welcome Remarks

Stefano Bertuzzi, Ph.D., M.P.H., American Society for Microbiology, Washington, DC

Alison Gammie, Ph.D., National Institute of General Medical Sciences, NIH, Bethesda, MD

7:45 p.m. – 8:00 p.m.

Opening Keynote Address

North Ballroom

Robert D. Bullard, Ph.D., Professor of Urban Planning and Environmental Policy, Texas Southern University, Houston TX

8:45 p.m. – 10:00 p.m.

PREP Scholars Meet & Greet (By Invitation Only)

Room 224 B

8:45 p.m. – 10:30 p.m.

Movie Night at ABRCMS: Hidden Figures

West Ballroom 301 ABC



Thursday, November 2

7:00 a.m. – 7:45 a.m.
Networking Breakfast

North Ballroom

7:00 a.m. – 7:00 p.m.
Registration Open

8:00 a.m. – 12:00 p.m.
Exhibit Setup

8:00 a.m. – 9:00 a.m.
Concurrent Professional Development Sessions
(4 session options)

8:00 a.m. – 9:00 a.m.

Session 1 | West Ballroom 301 ABC

Orientation for Undergraduates and Post baccalaureates

(Mandatory for undergraduate and post baccalaureate students)

Networking as a Required Life Skill and Professionalism as a Necessary Attribute for Students

Howard G. Adams, Ph.D., H.G. Adams and Associates, Norfolk, VA

Program Overview and Making the Most of ABCMS

Sandra Murray, Ph.D., University of Pittsburgh, Pittsburgh, PA

Conference Announcements

Irene Hulede, American Society for Microbiology, Washington, DC

8:00 a.m. – 9:00 a.m.

Session 2 | Room 121 ABC

Getting Published: Advice for Graduate Students and Postdoctoral Scientists

(Recommended for graduate students, postdoctoral scientists, and early-career scientists)

Victor DiRita, Ph.D., Michigan State University, East Lansing, MI

8:00 a.m. – 9:00 a.m.

Session 3

Mandatory Judges Meeting (All 12 Disciplines)

(Mandatory for all student presentation judges)

Biochemistry and Molecular Biology: **Room 128 AB**

Chemistry: **Room 221 ABC**

Cancer Biology: **Room 127 C**

Cell Biology: **Room 127 B**

Computational Biology & Systems Biology: **Room 222 C**

Developmental Biology and Genetics: **Room 127 A**

Engineering, Physics, and Mathematics: **Room 126 C**

Immunology: **Room 122 ABC**

Microbiology: **Room 131 AB**

Neuroscience: **Room 226 ABC**

Physiology: **Room 124 AB**

Social and Behavioral Sciences & Public Health: **Room 129 AB**

8:00 a.m. – 9:00 a.m.

Session 4 | Room 222 AB

Building Community for Deaf and Hard-of-Hearing Scientists

Jessica Cuculick, Ed.D., Rochester Institute of Technology, Rochester, NY

Jeff Shaul, B.S., M.Ed., Rochester Institute of Technology, Rochester, NY

Steven Murdy, B.S., Rochester Institute of Technology, Rochester, NY

PJ Simpson-Haidaris, Ph.D., University of Rochester, Rochester, NY

9:15 a.m. – 10:30 a.m.
Concurrent Professional Development Sessions
(6 session options)

9:15 a.m. – 10:30 a.m.

Session 1 | Room 121 ABC

Picking the Perfect Ph.D. Program for You: Why Choose a School with a T32?

(Recommended for undergraduate students interested in the Ph.D. track)

Sharon Milgram, Ph.D., National Institutes of Health, Bethesda, MD

9:15 a.m. – 10:30 a.m.

Session 2 | Room 122 ABC

M.D.–Ph.D.—Is It Right for Me?

(Recommended for undergraduate students interested in the M.D.–Ph.D. track)

Robin Lorenz, M.D., Ph.D., University of Alabama at Birmingham, Birmingham, AL

Juanita Merchant, M.D., Ph.D., University of Michigan, Ann Arbor, MI

9:15 a.m. – 10:30 a.m.

Session 3 | Room 221 ABC

How Choosing the Right Advisor is Crucial for Success

(Recommended for undergraduate students [juniors and seniors], and postbaccalaureate students)

J. Marcela Hernandez, Ph.D., The Ohio State University, Columbus, OH

9:15 a.m. – 10:30 a.m.

Session 4 | Room 124 AB

Research Ethics Cases for Training Undergraduate Researchers

(Recommended for graduate students doctoral, senior level, postdoctoral scientists, and faculty)

Colleen Kearns, Ph.D., Cornell University, Ithaca, NY
Laurel Southard, M.S., Cornell University, Ithaca, NY

9:15 a.m. – 10:30 a.m.

Session 5 | Room 222 C

Imagining and Defining the Grant that Will Fund Your Postdoc

(Recommended for graduate students and postdoctoral scientists)

Giselle Parker, Ph.D., National Science Foundation, Arlington, VA

Christine O'Brien, National Academies, Washington, DC

9:15 a.m. – 10:30 a.m.

Session 6

NIGMS Program Director Discussions

(Mandatory for TWD program directors)

Bridges to baccalaureate, MARC, RISE UG and IMSD UG programs: **Room 229 A**

Bridges to doctoral programs, PREP, T32, IMSD Ph.D., RISE MS/Ph.D., and IRACDA: **Room 229 B**
 BUILD/NRMN/CEC programs: **Room 224 A**

10:45 a.m. – 11:45 a.m.

Concurrent Professional Development Sessions
(5 session options)

10:45 a.m. – 11:45 a.m.

Session 1 | Room 121 ABC

Career Pathway in Industry, Government, and Research Organization: What's Next?: Beyond the Academy

(Recommended for all students)

Annette Angus, Ph.D., Scientist II, R&D, Clorox Company, Oakland, CA

Ruan Cox, Ph.D., Industry Alliance Development Associate, Moffitt Cancer Center, Tampa, FL

Maiysha Jones, Ph.D., Senior Clinical Scientist, R&D, Procter & Gamble Company, Cincinnati, OH

Adrian Land, Ph.D., Microbiologist, U.S. FDA, Washington, DC

10:45 a.m. – 11:45 a.m.

Session 2 | Room 122 ABC

Career Pathways in Biotech and Pharma Launch Your Career in Industry: Become the Standout Candidate

Sponsored by Genentech

(Recommended for undergraduate students, and
graduate students/postdoctoral researchers)

Pam Leung, University Talent Acquisition and
Strategy Sr. Program Manager, Genentech, San
Francisco, CA

Jonathan Zarzar, Engineer II (Late Stage
Pharmaceutical Development), Genentech, San
Francisco, CA

Alex Gaither, Ph.D., Novartis, Cambridge, MA
Gary Pestano, Ph.D., VP of Product Development
and Operations, Biodesix, Boulder, CO

10:45 a.m. – 11:45 a.m.

Session 3 | Room 124 AB

Biomedical Innovation & Entrepreneurship

(Recommended for all attendees)

Carolyn Dealy, Ph.D., University of Connecticut
Health Center, Storrs, CT

10:45 a.m. – 11:45 a.m.

Session 4 | Room 221 ABC

How We Learn...and How We Don't

(Recommended for all attendees)

Robert A. Duke, Ph.D., University of Texas at
Austin, Austin, TX

10:45 a.m. – 11:45 a.m.

Session 5 | Room 224 A

Insider's Guide to NIH Peer Review and Getting an NIH Fellowship or Grant

(Recommended for graduate students, postdoctoral
scientists, and faculty)

Lisa Steele, Ph.D., National Institutes of Health,
Bethesda, MD

12:00 p.m. – 12:45 p.m.

Networking Lunch

North Ballroom

12:45 p.m. – 1:45 p.m.

Plenary Scientific Session

North Ballroom

From Monitoring Microbes in the International Space Station to Building Houses on Mars: A Path that Will Require the Contributions of a Diverse Community

Montserrat (Monsi) Roman, M.S., NASA Space
Station, Huntsville, AL

1:45 p.m. – 5:30 p.m.

Exhibits Open

2:00 p.m. – 3:15 p.m.

POSTER SESSION 1 (A)

3:30 p.m. – 4:45 p.m.

POSTER SESSION 2 (B)

5:30 p.m. – 6:45 p.m.

Oral Presentation Sessions
(All 12 Disciplines)

Biochemistry and Molecular Biology: **Room 128 AB**

Biochemistry, Molecular Biology and Chemistry:
Room 221 ABC

Cancer Biology: **Room 127 C**

Cell Biology and Neuroscience: **Room 127 B**

Computational Biology, Systems Biology, Engineering,
Physics and Mathematics: **Room 222 C**

Developmental Biology and Genetics: **Room 127 A**

Engineering, Physics and Mathematics: **Room 126 C**

Microbiology: **Room 131 AB**

Immunology: **Room 122 ABC**

Neuroscience: **Room 226 ABC**

Physiology: **Room 124 AB**

Social and Behavioral Sciences & Public Health:
Room 129 AB

7:00 p.m. – 7:45 p.m.

Networking Dinner

North Ballroom

8:00 p.m. – 9:00 p.m.
PDO Steering Committee Meeting (By Invitation Only)
Room 223

8:00 p.m. – 9:30 p.m.
Professional Development Sessions
(3 session options)

8:00 p.m. – 9:30 p.m.

Session 1 | West Ballroom 301

STEM Career Choices/Gateway to the Future: Conversations with Scientists

(Recommended for undergraduate, and post baccalaureate)

Scientists:

- Maiysha Jones, Ph.D.**
Procter & Gamble (Industry/Research)
- Marquita Qualls, Ph.D.**
Entropia Consulting (Consulting)
- Claudio Ortiz, Ph.D.**
Colgate (Industry/Research)
- Ronald Hunter**
Coca Cola Company (Industry)
- Gary Pestano, Ph.D.**
Biodesix (Industry/Research)
- Marcelo Vines, Ph.D.**
Oberlin College (Policy/University Administration)
- Kenny Gibbs, Ph.D.**
National Institute of Health (Government Administration)
- Prasad Kuduville, Ph.D.**
American Society for Microbiology (Non Profit)
- Alex Gaither, Ph.D.**
Novartis (Pharmaceutical/Research)
- Cheryl Rendleman, Ph.D.**
Omar Consulting (Consulting)
- Patrice Yarbrough, Ph.D.**
NASA (Government/Research)
- Keisha John, Ph.D.**
University of Virginia (University Administration)
- Medeva Ghee, Ph.D.**
Brown University
(University Administration/Teaching)
- Nicole Barkley, Ph.D.**
Personal Genome Diagnostics (Industry/Research)
- Adrian Land, Ph.D.**
U.S. FDA (Government/Research)

- Vanessa Gonzalez-Perez, Ph.D.**
Princeton University (Teaching/Administration)
- Annette Angus, Ph.D.**
Clorox Company (Industry/Research)
- Ruan Cox, Ph.D.**
Moffitt Cancer Center (Non Profit/Research)
- Cherrie Butts, Ph.D.**
Biogen (Industry/Research)
- James Rogers, Ph.D.**
Consumer Reports (Non Profit/Government)
- Melissa Essinger, Ph.D.**
High Point Naval Academy (Government/Research)
- Giselle Parker, Ph.D.**
National Science Foundation (Government/ Administration)
- Jonathan Zarzar, Ph.D.**
Genentech (Research)
- Gregory Buck, Ph.D.**
Texas A&M Corpus Christie University
(Undergraduate Teaching)

8:00 p.m. – 9:30 p.m.

Session 2 | Room 222 AB

Postdoc Fundamentals: Selecting a Training Experience to Match Your Career Goals

(Recommended for graduate students and postdoctoral scientists)

- Sibby Anderson-Thompkins, Ph.D.,** University of North Carolina at Chapel Hill, Chapel Hill, NC
- Alberto Roca, Ph.D.,** Diverse Scholar, Irvine, CA

8:00 p.m. – 9:30 p.m.

Session 3 | Room 222 C

Be the CURE: Leveraging the Classroom for Undergraduate Research

(Recommended for postdoctoral scientists, faculty and program directors)

- Carleitta Paige-Anderson, Ph.D.,** Virginia Union University, Richmond, VA

Friday, November 3

7:00 a.m. – 7:45 a.m.
Networking Breakfast

North Ballroom

7:00 a.m. – 5:00 p.m.
Registration Open

8:00 a.m. – 9:00 a.m.
Concurrent Scientific Sessions
(8 session options)

8:00 a.m. – 9:00 a.m.

Session 1 | Room 121 ABC

Friend or Foe: Neuroimmune Responses in the Brain

Candice Brown, Ph.D., University of West Virginia, Morgantown, WV

Edjah Nduom, M.D., National Institutes of Health, Bethesda, MD

8:00 a.m. – 9:00 a.m.

Session 2 | Room 222 AB

The Toxic Sins of Our Ancestors

Sponsored by Society of Toxicology

Patrick Allard, Ph.D., University of California, Los Angeles, CA

8:00 a.m. – 9:00 a.m.

Session 3 | Room 124 AB

A Tale of Two Metals

Michael Johnson, Ph.D., University of Arizona, Tucson, AZ

8:00 a.m. – 9:00 a.m.

Session 4 | Room 226 ABC

Precision Medicine Research: Where Genomics Meets Big Data Biomedical Informatics

Dana Crawford, Ph.D., Case Western University, Cleveland, OH

8:00 a.m. – 9:00 a.m.

Session 5 | Room 221 ABC

Protein Structures: Producing, Using, and Teaching about Life's Building Blocks

Shuchismita Dutta, Ph.D., Rutgers, The State University of New Jersey, Piscataway, NJ
Krystle J. McLaughlin, Ph.D., Vassar College, Poughkeepsie, NY

8:00 a.m. – 9:00 a.m.

Session 6 | Room 122 ABC

Imaging Mass Spectrometry Reveals Early Events in Cancer and Microbial Colonization of Hosts

Sponsored by the American Society for Microbiology

Laura Sanchez, Ph.D., University of Illinois, Chicago, IL

8:00 a.m. – 9:00 a.m.

Session 7 | Room 224 B

Investigating the Interaction between Arginine 8 Methylation and Serine 10 Phosphorylation in Histone H3

Cecilia Zurita Lopez, Ph.D., California State University, Los Angeles, CA

8:00 a.m. – 9:00 a.m.

Session 8 | Room 229 AB

Cell Engineering and Biomaterial Strategies for Tissue Engineering

Josephine Allen, Ph.D., University of Florida, Gainesville, FL

9:15 a.m. – 10:15 a.m.

Plenary Session

West Ballroom 301 ABC

Race, Class, and Government Services: How We Got Here, How We Move Forward

Ian F. Haney López, Earl Warren Professor of Public Law, UC Berkeley Director, Racial Politics Project, Haas Institute for a Fair and Inclusive Society Senior Fellow, Demos, Berkeley, CA

10:15 a.m. – 12:00 p.m.
Exhibits Open

10:30 a.m. – 11:45 a.m.
POSTER SESSION 3 (C)

10:45 a.m. – 11:45 a.m.
Meet and Greet with Ian F. Haney López
Exhibit Hall Mentoring/Networking Area

12:00 p.m. – 12:45 p.m.
Networking Lunch
North Ballroom

12:45 p.m. – 1:45 p.m.
Plenary Session

North Ballroom
**Public Health and Science, Technology,
 Engineering and Mathematics**

Hazel D. Dean, ScD, DrPH (Hon), FACE, Deputy Director, National Center for HIV/AIDS, Viral Hepatitis, STD, and TB Prevention, Centers for Disease Control and Prevention, Atlanta, GA

2:00 p.m. – 3:00 p.m.
**Concurrent Professional Development Sessions
 (8 session options)**

2:00 p.m. – 3:00 p.m.

Session 1 | Room 121 ABC

**Effective Personal Statement for Getting into
 Highly Competitive Graduate Schools and
 Summer Programs**

(Recommended for undergraduate, post baccalaureate, and master's students)

Joel Oppenheim, Ph.D., New York University, New York, NY

Victoria Freedman, Ph.D., Albert Einstein University, New York, NY

2:00 p.m. – 3:00 p.m.

Session 2 | Room 122 ABC

Imposters, Resilience, and Academy Training

(Recommended for all attendees)

Diana Azurdia, University of California, Los Angeles, Los Angeles, CA
Sharon Milgram, Ph.D., National Institutes of Health, Bethesda, MD

2:00 p.m. – 3:00 p.m.

Session 3 | Room 124 AB

**Dark Matters: A Look at “Black Holes” as
 Metaphor for Mitigating Risk and Increasing
 STEM Student Success**

(Recommended for all attendees)

Damon Tull, Ph.D., ASEP, CSM, American Society for Engineering Education, Washington, DC
Renetta Garrison Tull, Ph.D., University of Maryland Baltimore County, Baltimore, MD

2:00 p.m. – 3:00 p.m.

Session 4 | Room 221 ABC

Time Management 101

(Recommended for all students)

Sandra Murray, Ph.D., University of Pittsburgh, Pittsburgh, PA

2:00 p.m. – 3:00 p.m.

Session 5 | Room 222 C

**Living and Working with a Disability as a
 Student in the Sciences**

(Recommended for all attendees)

Mahadeo Sukhai, Canadian National Institute for the Blind, Toronto, Ontario

2:00 p.m. – 3:00 p.m.

Session 6 | Room 222 AB

**Advice for the Advisors: Helping Your Students
 Become Successful Ph.D. Applicants**

(Recommended for faculty and program directors)

Nancy Schwartz, Ph.D., University of Chicago, Chicago, IL

Nancy Street, Ph.D., University of Texas Southwestern Medical Center, Dallas, TX

Program

2:00 p.m. – 3:00 p.m.

Session 7 | Room 226 ABC

Graduate Opportunities in Global Public Health and Health Security

(Recommended for undergraduate students)

Prasad Kuduville, Ph.D., American Society for Microbiology, Washington, DC
Hazel D. Dean, ScD, DrPH (Hon), FACE, Centers for Disease Control and Prevention, Atlanta, GA

2:00 p.m. – 3:00 p.m.

Session 8 | Room 229 ABC

TWD-PDO Meeting (Organized by NIGMS Program Director Association)

(Mandatory for TWD program directors)

Barry Komisaruk, Ph.D., Rutgers University, Newark, NJ

3:00 p.m. – 6:00 p.m.

Exhibits Open

3:15 p.m. – 4:30 p.m.

POSTER SESSION 4 (D)

3:30 p.m. – 4:15 p.m.

Mentoring Session

Exhibit Hall Mentoring Theater

Students Utilizing Mentoring as a Personal Development Strategy

Howard Adams, Ph.D., Adams and Associates, Norfolk, VA

4:30 a.m. – 5:30 p.m.

SMALL GROUP MENTORING COACHING

Exhibit Hall Mentoring/Networking Area

4:45 p.m. – 6:00 p.m.

POSTER SESSION 5 (E)

6:15 p.m. – 7:15 p.m.

ABRCMS Feedback Session—Open Forum

(Recommended for all attendees)

Avery August, Ph.D., Cornell University, Ithaca, NY (ABRCMS Chairperson)
Irene Hulede, American Society for Microbiology, Washington, DC, (ABRCMS Project Manager)

Room 121 ABC

7:15 p.m. – 8:15 p.m.

MAPRS Program Director Meeting
(By Invitation Only)

Room 223

7:15 p.m. – 8:15 p.m.

National Research Mentoring Network Meet and Greet

Room 224 A

7:15 p.m. – 8:15 p.m.

Concurrent Professional Development Sessions
(8 session options)

7:15 p.m. – 8:15 p.m.

Session 1 | Room 222 AB

Confessions of Admission Officials: What We Look at, and For, in Graduate School Applications

(Recommended for undergraduate and graduate students)

Gustavo Arrizabalaga, Ph.D., Indiana University, Indianapolis, IN
Robert Binder, Ph.D., University of Pittsburgh, Pittsburgh, PA
Colleen Gabauer, Ph.D., Purdue University, West Lafayette, IN
Tara Hobson-Proter, M.A., Indiana University, Indianapolis, IN

7:15 p.m. – 8:15 p.m.

Session 2 | Room 226 ABC

Strategies for Taking Standardized Admissions Tests: Preparing for the GRE Exams

(Recommended for undergraduate and post baccalaureate students)

Laurie Connor, Ph.D., Baylor School of Medicine, Houston, TX

7:15 p.m. – 8:15 p.m.

Session 3 | Room 222 C

Strategies for Taking Standardized Admissions Tests: Preparing for the MCAT Exams

(Recommended for undergraduate and postbaccalaureate students)

Sandra Oyewole, Ph.D., Trinity University, Washington, DC

7:15 p.m. – 8:15 p.m.

Session 4 | Room 224 B

Post Baccalaureate Programs and Tips for Submitting a Successful Application

(Recommended for students considering post baccalaureate training)

Sharon L. Milgram, Ph.D., National Institutes of Health, Bethesda, MD
Additional Speaker to Be Determined

7:15 p.m. – 8:15 p.m.

Session 5 | Room 122 ABC

Three Things You Need to Succeed in Your Scientific Career

(Recommended for all attendees)

Michael Johnson, Ph.D., University of Arizona, Tucson, AZ

7:15 p.m. – 8:15 p.m.

Session 6 | Room 124 AB

Interviewing for M.D.–Ph.D. Programs

(Recommended for undergraduate students)

Robin Lorenz, M.D., Ph.D., University of Alabama, Birmingham, AL
Joseph Barbieri, Ph.D., Medical College of Wisconsin, Milwaukee, WI

7:15 p.m. – 8:15 p.m.

Session 7 | Room 221 ABC

Presenting Your Research (Doesn't Have to Be a Nightmare for You or Your Audience)

(Recommended for all attendees)

Scott Barolo, Ph.D., University of Michigan, Ann Arbor, MI

7:15 p.m. – 8:15 p.m.

Session 8 | Hyatt Regency Hotel

Meet and Greet with the Pharmaceutical Sciences Ph.D. Program at UNC

8:30 p.m. – 10:30 p.m.
An Evening of Fun!

Movie Night at ABRCMS: The Immortal Life of Henrietta Lacks

West Ballroom ABC

Saturday, November 4, 2017

7:00 a.m. – 7:45 a.m.
Networking Breakfast

North Ballroom

7:00 a.m. – 1:00 p.m.
Registration Open

8:00 a.m. – 9:15 a.m.
Oral Presentation Sessions
(All 12 Disciplines)

Biochemistry and Molecular Biology: Room 128 AB

Biochemistry and Molecular Biology: Room 221 ABC

Developmental Biology and Genetics: Room 127 C

Developmental Biology and Genetics: Room 127 B

Engineering, Physics, and Mathematics: Room 222 C

Immunology and Microbiology: Room 127 A

Microbiology, and Social and Behavioral Sciences and Public Health: Room 121 ABC

Neuroscience: Room 131 AB

Neuroscience: Room 122 ABC

Physiology and Cell Biology: Room 222 AB

Social and Behavioral Sciences and Public Health: Room 124 AB

Social and Behavioral Sciences & Public Health: Room 129 AB

9:15 a.m. – 12:00 p.m.
Exhibit Hall Open

9:30 a.m. – 10:45 a.m.
POSTER SESSION 6 (F)

10:00 a.m. – 10:45 a.m.
MENTORING SESSION

Exhibit Hall Mentoring Theater

Navigating Your Mentoring Relationships with a MAP (Mentoring Action Plan) for Mentees

Steven Lee, Ph.D., University of California, Davis, CA

Program

11:00 a.m. – 12:00 p.m.
SMALL GROUP MENTORING COACHING

Exhibit Hall Mentoring/Networking Area

12:15 p.m. – 12:45 p.m.
Networking Lunch

North Ballroom

1:00 p.m. – 4:00 p.m.
Exhibit Takedown

12:45 p.m. – 1:45 p.m.
Closing Keynote Speaker

North Ballroom

Becoming Dr. Q: An American Dream like No Other/ This is Your Brain on STEM: Making the Case for Careers in Science, Technology, Engineering, and Math

Alfredo Quinones-Hinojosa, M.D., Mayo Clinic,
Tallahassee, FL

2:15 p.m. – 3:00 p.m.
Concurrent Professional Skills Café Sessions for Students (7 session options)

(Sessions will be repeated at 3:15 p.m.)

2:15 p.m. – 3:00 p.m.

Session 1 | Room 121 ABC

Building Your Brand Starts NOW

(Recommended for students)

Marquita Qualls, Ph.D., Entropia Consulting,
Nashville, TN

2:15 p.m. – 3:00 p.m.

Session 2 | Room 122 ABC

Bridging the Gap: Supporting the Academic Success of Nontraditional / Community College Students at 4-Year Institutions

(Recommended for community college and nontraditional students, faculty, and program administrators)

L'Aurelle Johnson, Ph.D., M.S., University of Minnesota College of Pharmacy, Minneapolis, MN
Janice Reuben, B.A., University of Michigan Center for the Education of Women, Ann Arbor, MI
Jayne Reuben, Ph.D., Texas A&M University College of Dentistry, Dallas, TX

2:15 p.m. – 3:00 p.m.

Session 3 | Room 124 AB

Blogging, Tweeting, and Writing to Promote Your Career and Diversity Science

(Recommended for all attendees)

Alberto Roca, Ph.D., Diverse Scholar, Irvine, CA
Stephani Page, Ph.D., University of North Carolina at Chapel Hill, Chapel Hill, NC

2:15 p.m. – 3:00 p.m.

Session 4 | Room 226 ABC

Making the Case for Graduate School

(Recommended for all attendees)

Howard G. Adams, Ph.D., Howard Adams and Associates, Norfolk, VA

2:15 p.m. – 3:00 p.m.

Session 5 | Room 224 AB

What You Can Do with a Ph.D.: The Biomedical Workforce and Me! Using Workforce Data To Guide Career Development

(Recommended for all attendees)

Chelsea Barbercheck, Ph.D., Boston University, Boston, MA
Lynese Wallace, M.P.H., Boston University, Boston, MA

2:15 p.m. – 3:00 p.m.

Session 6 | Room 221 ABC

"I Wish My Mentor Knew"—Advice from Experienced Biomedical Research Mentors

(Recommended for graduate students and postdoctoral scientists)

Rafael Luna, Ph.D., Boston University, Boston, MA
Irelene Ricks, Ph.D., Keystone Symposia, Silverthorne, CO

2:15 p.m. – 3:00 p.m.

Session 7 | Room 222 AB

Making the Most of Your Mentor-Mentee Relationships

(Recommended for all students)

William Mahoney, Ph.D., University of Washington, Seattle, WA
Eric Nealy, B.S., University of Washington, Seattle, WA

2:15 p.m. – 4:00 p.m.

Concurrent Professional Development for Graduate Students, Postdocs, Faculty, and Administrators (2 session options)

2:15 p.m. – 4:00 p.m.

Session 1 | Room 128 AB

Job Search Strategies: Effective Interviewing Skills and Negotiating the Job Offer

(Recommended for senior graduate students, postdoctoral scientists, and junior faculty)

Lauren Celano, Ph.D., Propel Careers, Boston, MA

2:15 p.m. – 4:00 p.m.

Session 2 | Room 229 AB

Implementing the Workshop: “Do You Play Fair? A Workshop about Bias in Academia”

(Recommended for faculty, program directors, and exhibitors)

Christine Pribbenow, Ph.D., University of Wisconsin–Madison, Madison, WI

Donald Dantzer, M.S.Ed., University of Wisconsin–Madison, Madison, WI

3:15 p.m. – 4:00 p.m.

Concurrent Professional Skills Café Sessions For Students

(These sessions are repeated from 2:15 p.m.)

3:15 p.m. – 4:00 p.m.

Session 1 | Room 121 ABC

Building Your Brand Starts NOW

(Recommended for students)

Marquita Qualls, Ph.D., Entropia Consulting, Nashville, TN

3:15 p.m. – 4:00 p.m.

Session 2 | Room 122 ABC

Bridging the Gap: Supporting the Academic Success of Nontraditional / Community College Students at 4-Year Institutions

(Recommended for community college and nontraditional students, faculty, and program administrators)

L'Aurelle Johnson, Ph.D., M.S., University of Minnesota College of Pharmacy, Minneapolis, MN

Janice Reuben, B.A., University of Michigan Center for the Education of Women, Ann Arbor, MI

Jayne Reuben, Ph.D., Texas A&M University College of Dentistry, Dallas, TX

3:15 p.m. – 4:00 p.m.

Session 3 | Room 124 AB

Blogging, Tweeting, and Writing to Promote Your Career and Diversity Science

(Recommended for all attendees)

Alberto Roca, Ph.D., Diverse Scholar, Irvine, CA

Stephani Page, Ph.D., University of North Carolina at Chapel Hill, Chapel Hill, NC

3:15 p.m. – 4:00 p.m.

Session 4 | Room 226 ABC

Making the Case for Graduate School

(Recommended for all attendees)

Howard G. Adams, Ph.D., Howard Adams and Associates, Norfolk, VA

3:15 p.m. – 4:00 p.m.

Session 5 | Room 224 AB

What You Can Do with a Ph.D.: The Biomedical Workforce and Me! Using Workforce Data To Guide Career Development

(Recommended for all attendees)

Chelsea Barbercheck, Ph.D., Boston University, Boston, MA

Lynese Wallace, M.P.H., Boston University, Boston, MA

3:15 p.m. – 4:00 p.m.

Session 6 | Room 221 ABC

"I Wish My Mentor Knew"—Advice from Experienced Biomedical Research Mentors

(Recommended for graduate students and postdoctoral scientists)

Rafael Luna, Ph.D., Boston University, Boston, MA

Irelene Ricks, Ph.D., Keystone Symposia, Silverthorne, CO

3:15 p.m. – 4:00 p.m.

Session 7 | Room 222 AB

Making the Most of Your Mentor-Mentee Relationships

(Recommended for all students)

William Mahoney, Ph.D., University of Washington, Seattle, WA

Eric Nealy, B.S., University of Washington, Seattle, WA

4:30 p.m. – 5:30 p.m.

LGBTQ Meet and Greet

Room 223

5:30 p.m. – 7:30 p.m.

FREE TIME! FREE TIME! FREE TIME!

7:30 p.m. – 9:45 p.m.

Banquet And Awards Ceremony

North Ballroom

Conference Wrap-up

John Fitzgerald Gates, Ph.D., University of Virginia, Charlottesville, VA

Student Presentation Awards Ceremony

Concluding Remarks

Avery August, Ph.D., Cornell University College of Veterinary Medicine, Ithaca, NY

10:00 p.m. – 2:00 a.m.

**Closing Social Invite and Dance
(All Are Invited)**

Sheraton Grand Phoenix Hotel—Phoenix Ballroom





Poster Presentations by Scientific Discipline

(Sessions A-F)

Biochemistry and Molecular Biology	001-048
Cancer Biology	049-083
Cell Biology	084-104
Chemistry	105-130
Computational and Systems Biology	131-144
Developmental Biology and Genetics	145-167
Engineering, Physics, and Mathematics	168-194
Immunology	195-207
Microbiology	208-242
Neuroscience	243-282
Physiology	283-300
Social and Behavioral Sciences and Public Health	301-335

Student Oral Presenters Listing

Thursday, November 2

Oral Session 1: Biochemistry and Molecular Biology

Thursday, November 2, 5:30 p.m. – 6:45 p.m.

Room 128 AB

O-001

Testing a Novel Drug Avenue for Improving the Type of Behavior Disturbed in Alzheimer's Disease
Kaitlan Smith, University of North Carolina, Pembroke

Biochemistry and Molecular Biology: Biochemistry

O-002

Inhibitors of the RAD52 DNA Repair Protein
Swikriti Shrestha, University of Iowa

Biochemistry and Molecular Biology: Biochemistry

O-003

Antioxidant Drug Tempol Modifies Metabolism of Gut Microbiota in Mice

Darnella Cole, Pennsylvania State University

Biochemistry and Molecular Biology: Biochemistry

O-004

Neuroprotective Effects of Nicotine via Mediation of Cytokine Production

Jonathan Mwizerwa, Georgia Gwinnett College

Biochemistry and Molecular Biology: Biochemistry

O-005

Catalytic Activity of Mutant Protein Tyrosine Phosphate 1B

Ishmael Moya, SUNY Old Westbury

Biochemistry and Molecular Biology: Biochemistry

Oral Session 1: Biochemistry and Molecular Biology and Chemistry

Thursday, November 2, 5:30 p.m. – 6:45 p.m.

Room 221 ABC

O-006

Applying a Novel Gene Modulation Platform to Regulate Disease Relevant Genes

Tiffany Wang, University of North Carolina, Chapel Hill

Biochemistry and Molecular Biology:
Chemical Biology

O-007

Zif-8 for the Remediation of Dye-Contaminated Effluent

Michael Chin, California State University, Long Beach

Chemistry: Environmental Chemistry

O-008

Phytochemical Screening and Antioxidant Activity of *Ganoderma* Species in the Central Region of Ghana

Maat Mack, University of Cape Coast

Chemistry: Environmental Chemistry

O-009

Cobalt(III) Schiff Base Complexes as Potential Anticancer Prodrugs

Hendryck Gellineau, Cornell University

Chemistry: Inorganic Chemistry

O-010

An In-Depth Study Involving a Tetranuclear Cobalt(III) Complex as a Water Oxidation Catalyst

Abbygail Reid, Old Dominion University

Chemistry: Inorganic Chemistry

Oral Session 1: Cancer Biology

Thursday, November 2, 5:30 p.m. – 6:45 p.m.

Room 127 C

O-011

Role of CALR Mutations on MPL/JAK Signaling: New Road for Novel Therapies in MPN

Tiffany Merlinsky, Memorial Sloan Kettering Cancer Center

Cancer Biology: Cancer Biology

O-012

Examining the Involvement of Autophagy in Tamoxifen Resistant Breast Cancer Cells

Mariela Trejo, Johns Hopkins University School of Medicine

Cancer Biology: Cancer Biology

O-013

The p53-p21 Pathway Suppresses Non-Apoptotic Cell Death in Cancer Cells

Myshal Morris, Langston University

Cancer Biology: Cancer Biology

Student Oral Presenters Listing

O-014

^{13}C , ^{15}N Xanthine as a Probe for Evaluating Xanthine Oxidase Activity In Vivo
Camille Derderian, Memorial Sloan Kettering Cancer Center
Cancer Biology: Cancer Biology

O-015

Mechanosensitivity Analysis of Breast Cancer Tumor Cells From Needle Biopsy
Santiago Acero Bedoya, Brown University
Cancer Biology: Cancer Biology

Oral Session 1: Computational and Systems Biology and Engineering, Physics and Mathematics

Thursday, November 2, 5:30 p.m. – 6:45 p.m.
Room 222 C

O-016

Differentially Methylated Regions of SEPT9 in Black Women May Correlate to the Development of Bladder Urothelial Carcinoma
Kimberlyn Ellis, Spelman College
Computational and Systems Biology: Bioinformatics

O-017

Characterization of the Human Replication Landscape Using Okazaki Fragment Sequencing
Raquel Moya, New York University School of Medicine
Computational and Systems Biology: Computational Biology

O-018

Towards a Novel Bio-Chemo-Mechanical Model of Tissue Engineered Vascularrafts
Lillian Ekem, Yale University
Computational and Systems Biology: Computational Biology

O-019

Predicting Protein Levels from mRNA Levels
Alief Moulana, Carleton College
Computational and Systems Biology: Systems Biology

O-020

The Effect of Quantum Dots Size and Surface Chemistry on Biological Systems
Nadja Maldonado-Luna, University of Puerto Rico, Mayaguez
Engineering, Physics and Mathematics: Material Sciences

Oral Session 1: Cell Biology and Neuroscience

Thursday, November 2, 5:30 p.m. – 6:45 p.m.
Room 127 B

O-021

Methylphenidate Does Not Counteract the Acute Effects of Ethanol in Long-Evans Rats: Flash-Evoked Potentials, Body, Temperature, and Behavior
Lauren McLester-Davis, Lawrence University
Neuroscience: Neuroscience

O-022

Protecting Vulnerable Tissue from Brain Tsunamis: Implications for Stroke
Alanna Humphrey, Xavier University of Louisiana
Neuroscience: Neuroscience

O-023

Exploring the Role of Progranulins and Granulins in Lipid Metabolism
Christian Corrales, University of California, Los Angeles
Neuroscience: Neuroscience

O-024

Glutamine Sustains Cripto Expression and Function, Enabling MyosinII/RAB11A-Dependent Endosomal/Exosomal Trafficking in Stem Cells to Promote Tissue Regeneration
Erika Duell, California State University, Northridge
Cell Biology: Cell Biology

O-025

Hepatic Overexpression of hLRH-1 Attenuates Liver Lipid Accumulation and Improves Glucose Tolerance in Diet Induced Obese Mice
Chloe Lopez-Lee, University of California San Francisco
Cell Biology: Cell Biology

Oral Session 1: Developmental Biology and Genetics

Thursday, November 2, 5:30 p.m. – 6:45 p.m.
Room 127 A

O-026

Identifying Determinants of Multipotency in the *Caenorhabditis elegans* Somatic Gonad
Kayla Lopez-Alvillar, Virginia Commonwealth University
Developmental Biology and Genetics: Developmental Biology

Student Oral Presenters Listing

O-027

The Role of Brd4 in Adipogenesis
Jaena Taitague, Adipocyte Biology and Gene Regulation Section, Laboratory of Endocrinology and Receptor Biology, National Institute of Diabetes and Digestive and Kidney Diseases, National Institutes of Health
Developmental Biology and Genetics:
Developmental Biology

O-028

Bisphenol A (BPA) Impacts Placental Gene Expression in a Dose-Dependent and Sex-Specific Manner
Hailey Winstead, Columbia University
Developmental Biology and Genetics:
Developmental Biology

O-029

Expression of Slit Proteins in the Endocrine Pancreas
Faith Bowman, University of Wisconsin-Madison
Developmental Biology and Genetics:
Developmental Biology

O-030

CCR7/CCL19 GPCR Signaling in Early Embryonic Development
Lenore Monterroza, The University of Texas at El Paso
Developmental Biology and Genetics:
Developmental Biology

Oral Session 1: Engineering, Physics and Mathematics

Thursday, November 2, 5:30 p.m. – 6:45 p.m.
Room 126 C

O-031

Cranial Prosthesis for Chronic, Pan-Cortical Optical Imaging in Behaving Mice
Nahom Mossazghi, University of Minnesota
Engineering, Physics and Mathematics:
Bioengineering

O-032

3D Bioprinting Using Microfluidic Droplet Formation for Cell Encapsulation
David Maginnis, University of California, San Francisco
Engineering, Physics and Mathematics:
Bioengineering

O-033

Time-Dependent Changes in DNA Methylation in the Hippocampus following Blast Induced Traumatic Brain Injury
Shukuru Pascal, Virginia Tech
Engineering, Physics and Mathematics: Biomedical Engineering

O-034

In Silico Study of Thread Design and its Interconnection with Stress in Host Bone
Trevor Surratt, North Carolina Agricultural and Technical State University
Engineering, Physics and Mathematics: Biomedical Engineering

O-035

Preparation and *In Vitro* Evaluation of Alginate Microparticles Containing Amphotericin B for the Treatment of Candida Infections
Lisa Aponte-Reyes, Inter American University of Puerto Rico, Ponce Campus
Engineering, Physics and Mathematics: Biomedical Engineering

Oral Session 1: Immunology

Thursday, November 2, 5:30 p.m. – 6:45 p.m.
Room 122 ABC

O-036

The DNA Methyltransferase-Inhibitor, Guadecitabine, Shifts Myeloid-Derived Suppressor Cells From Inhibitory to Stimulatory
Essence Georges, Virginia Commonwealth University
Immunology: Basic Immunology

O-037

Studying Intestinal Permeability on a Murine Model of Multiple Sclerosis
Christina Ramelow, Eastern Washington University
Immunology: Basic Immunology

O-038

The Role of Itaconate in Stroke and Immunometabolism
KiAundra Kilpatrick, University of Michigan
Immunology: Basic Immunology

O-039

Role of Immune Cells in Prenatal Exposure to Cigarette Smoke
Javier Arroyo Morales, VA Ann Arbor Healthcare System
Immunology: Host Responses

Student Oral Presenters Listing



“The most valuable lesson I learned from ABRCMS is that there are so many different opportunities for me in science and that I have so many mentors that I can rely on to help my plan my journey.”

O-040

The Role of Interleukin-6 Receptor in Controlling Anti-RBC Alloantibody Production and Memory
Soraya Tarrah, *University of Virginia*
Immunology: Host Responses

Oral Session 1: Microbiology

Thursday, November 2, 5:30 p.m. – 6:45 p.m.
Room 131 AB

O-041

Methamphetamine Promotes *Cryptococcus neoformans* Brain Infection
Aneesa Valentine, *CUNY - Brooklyn College*
Microbiology: Mycology

O-042

Locating Foci of *Toxoplasma gondii* in an Infected Brain
Cuong Tran, *University of California, Irvine*
Microbiology: Parasitology

O-043

HIV-1 Envelope Glycoprotein Trimeric Immunogens Derived from Donor 45 Envelope Sequences form Highly Stable and Native-Like Trimers
Jose Santiago Echevarria, *Department of Immunology and Microbial Science, The Scripps Research Institute*
Microbiology: Virology

O-044

Generating Recombinant Virus MVA-OX40L for Cancer Immunotherapy
Christine Chen, *City College of New York*
Microbiology: Virology

O-045

Elucidating the Cause of Epidemic Beak Deformities across Species: Poecivirus in North American Birds with Avian Keratin Disorder
Rachel Liu, *University of California, San Francisco*
Microbiology: Virology

Oral Session 1: Neuroscience

Thursday, November 2, 5:30 p.m. – 6:45 p.m.
Room 226 ABC

O-046

Demonstrating Overlap of Arc and Npas4 Temporal Transcription Kinetics in the Hippocampus
Stephon Broome, *Brooklyn College*
Neuroscience: Neurobiology

O-047

Effects of Occupational Nanomaterial Exposure on the Blood Brain Barrier
Samantha Saunders, *Virginia Commonwealth University*
Neuroscience: Neurobiology

O-048

The Neural Basis of Sensory Substitution in the Blind
Antoinette Charles, *New York University- Biomedical Sciences*
Neuroscience: Neurobiology

O-049

The Impact of Tsc1 Gene Deletion on Dopamine Transporter
Brianna Marsh, *University of California, Berkeley*
Neuroscience: Neurobiology

Student Oral Presenters Listing

O-050

AAV-Mediated-Cas9 Gene Editing to Study
Addiction Neurocircuitry
Kimberly Cruz, Stanford School of Medicine
Neuroscience: Neurobiology

Oral Session 1: Physiology

Thursday, November 2, 5:30 p.m. – 6:45 p.m.
Room 124 AB

O-051

Does Preservation of the Ampulla of Vater during
Primary Percutaneous Biliary Stent Placement
decrease the Incidence of Cholangitis at Stent
Occlusion?
*Anastasia Artemiev, Memorial Sloan Kettering Cancer
Center*
Physiology: Anatomy

O-052

Scavenger Receptor Class B Type I Mediates
Coenzyme Q Levels in Metabolic Tissue
Reuben Hogan, University of California, Berkeley
Physiology: Nutrition

O-053

Cinnamic Aldehyde Encapsulated in PLGA
Nanoparticles as a Potential Therapeutic to Improve
Arterial Surgery Outcomes
*Emily Valentin-Méndez, University of North Carolina,
Chapel Hill*
Physiology: Pharmacology

O-054

Protective Effects of Mitochondrial Targeted
Peptide SS-20 on Renal Damage in the Unilateral
Ureteral Obstruction Model
Kailey Singh, City College of New York
Physiology: Pharmacology

O-055

Role of Obstructive Sleep Apnea in Nocturnal
Heart Blocks
Eden Ramirez, Schoolcraft College
Physiology: Physiology

Oral Session 1: Social and Behavioral Sciences and Public Health

Thursday, November 2, 5:30 p.m. – 6:45 p.m.
Room 129 AB

O-056

Teacher Rated Inattention and Hyperactivity/
Impulsivity Predicts School-Age BMI
Geneva Hidalgo, The City College of New York
Social and Behavioral Sciences and Public Health:
Psychology

O-057

Parent-Child Interactions in Bookreading Contexts in
Low-Income Latino Families
*Anele Villanueva, New York University School of
Medicine*
Social and Behavioral Sciences and Public Health:
Psychology

O-058

Prevalence of Opioid Injection among Persons Using
Opioids Nonmedically in the United States: A Data
Synthesis
Tristan Gibson, Morehouse College
Social and Behavioral Sciences and Public Health:
Public Health and Epidemiology/Biostatistics

O-059

How Do You Like Them Apples? A Comparative
Analysis of Nicotine Content in Popular Flavored
Shisha Products
Emily Knipper, Roswell Park Cancer Institute
Social and Behavioral Sciences and Public Health:
Public Health and Epidemiology/Biostatistics

O-060

Adverse Childhood Experiences and Early Sexual
Debut among African-American Women in
Baltimore, MD
DeMarjion Murry, Philander Smith College
Social and Behavioral Sciences and Public Health:
Public Health and Epidemiology/Biostatistics

Student Oral Presenters Listing

Saturday, November 4

Oral Session 2: Biochemistry and Molecular Biology

Saturday, November 4, 8:00 a.m. – 9:15 a.m.
Room 128 AB

O-061

Recombinant Expression and Purification of the Decarboxylase Domain of ArnA from *Pseudomonas aeruginosa*

Rodger de Miranda, San Jose State University
Biochemistry and Molecular Biology: Biochemistry

O-062

Developing Human Hsp70 Variants to Counter Neurodegeneration

Jennifer Ramirez, University of Pennsylvania
Biochemistry and Molecular Biology: Biochemistry

O-063

The Impact of a Single Nucleotide Polymorphism on Ecto-Nucleotidase Activity

Jessica Robinson, Norfolk State University
Biochemistry and Molecular Biology: Biochemistry

O-064

Role of the Ryanodine Receptor in Diaphragm Dysfunction in Huntington's Disease

Felicia Benoit, Columbia University
Biochemistry and Molecular Biology: Biochemistry

O-065

Design and Analysis of a Microbiome Mock Community: Understanding and Mitigating Methodological Biases

Suquoia Mosby, Virginia Commonwealth University
Biochemistry and Molecular Biology: Genomics

Oral Session 2: Biochemistry and Molecular Biology

Saturday, November 4, 8:00 a.m. – 9:15 a.m.
Room 221 ABC

O-066

Generating RGS10/RGS18 Double Knockout Mice to Study Platelet Activation

Shekinah Hernandez, Hampton University
Biochemistry and Molecular Biology: Genomics

O-067

Expression of Plasmodium falciparum Glutamic Acid-Rich Protein (PfGARP) in Recombinant *Pichia pastoris* for Malaria Vaccine Development
Andrés Martínez-Muñiz, Brown University
Biochemistry and Molecular Biology: Proteomics

O-068

Mapping the Genetic Basis of Super Restrictors in Antiviral Protein MxA

Isabel Delwel, Fred Hutchinson Cancer Research Center

Biochemistry and Molecular Biology: Proteomics

O-069

Computational and Biophysical Analysis of a Mutational Hotspot Causing Neurodegeneration

Lauren Thornton, Xavier University of Louisiana
Biochemistry and Molecular Biology: Structural Biology

O-070

Structural Studies to Understand Evasion of an Astrovirus serotype-2 subtype to a Potent Neutralizing Antibody

Edmundo Perez, University of California, Santa Cruz
Biochemistry and Molecular Biology: Structural Biology

Oral Session 2: Developmental Biology and Genetics

Saturday, November 4, 8:00 a.m. – 9:15 a.m.
Room 127 C

O-071

Mechanisms Regulating Centriole Engagement during Male Meiosis in *C. elegans*

Anthony James, City University of New York Brooklyn College

Developmental Biology and Genetics:
Developmental Biology

O-072

The Addition of Human Follicular Fluid Promotes the Differentiation of Mouse Granulosa-Derived Induced Pluripotent Stem Cells into Ovarian-Like Cells

Uyenkha Dam, Brigham and Women's Hospital
Developmental Biology and Genetics:
Developmental Biology

Student Oral Presenters Listing

O-073

Osteocalcin Regulates Glucose Production in the Liver

Dina Sheira, Columbia University Medical Center
Developmental Biology and Genetics:
Developmental Biology

O-074

Role of the p160/ Steroid Receptor Coactivator Family in Immortalized Human Endometrial Stromal Cell Line

Raul Ordonez, Baylor College of Medicine
Developmental Biology and Genetics:
Developmental Biology

O-075

Effect of Elevated Temperature on Embryonic Skeletal Development in Antarctic Bullhead

Notothen, Notothenia coriiceps
Natalie Mosqueda, University of Oregon
Developmental Biology and Genetics: Evolution and
Developmental Biology

Oral Session 2: Developmental Biology and Genetics

Saturday, November 4, 8:00 a.m. – 9:15 a.m.
Room 127 B

O-076

Correlated Evolution of Antlers and Tusks in Cervids
Nicole Lopez, California State University, Long Beach
Developmental Biology and Genetics: Evolution and
Developmental Biology

O-077

Determining the Minimal Length for an Effective *In Situ* Hybridization Probe
Harrison Curnutte, McDaniel College
Developmental Biology and Genetics: Genetics

O-078

A Search for an ATM Gene Mutation in Maize
Socrates Bassuk, University of Minnesota
Developmental Biology and Genetics: Genetics



Student Oral Presenters Listing

O-079

Studying the Cryptic Initiation Phenotype: The Interplay between RNA Polymerase II and the Nucleosome Dynamics.

Ereny Gerges, University of North Carolina at Pembroke

Developmental Biology and Genetics: Genetics

O-080

Tissue-Specific Loss of SMN and its Effect on the Immune Response of *Drosophila Melanogaster*

Helen Dinh, University of North Carolina, Chapel Hill

Developmental Biology and Genetics: Genetics

Oral Session 2: Engineering, Physics and Mathematics

Saturday, November 4, 8:00 a.m. – 9:15 a.m.

Room 222 C

O-081

The Role of Glucose Metabolism in Cardiovascular Calcification and Fibrosis

Daniela Medina, Florida International University

Engineering, Physics and Mathematics: Biomedical Engineering

O-084

Cosolutes and Their Effect on a Domain-Swapped Homodimer

Gerardo Perez Goncalves, University of North Carolina, Chapel Hill

Engineering, Physics and Mathematics: Biophysics

O-085

720 MHz Pulse EPR Oxygen Imaging for Radiation Targeting

Raymond Thicklin, University of California, Santa Barbara

Engineering, Physics and Mathematics: Biophysics

Oral Session 2: Immunology and Microbiology

Saturday, November 4, 8:00 a.m. – 9:15 a.m.

Room 127 A

O-086

Adherent Biofilms in Bacterial Vaginosis

Kristina Folta, Fred Hutch Cancer Research Center

Immunology: Host Responses

O-087

Targeting the Cytokine Storm in Microbial Pathogenesis

Aws Ahmed, University of Texas at El Paso

Immunology: Host Responses

O-088

Characterization of *s1289* in Biofilm Formation and Infection in *S. flexneri*

Eric Rodríguez-López, University of Puerto Rico at Ponce

Microbiology: Bacteriology

O-089

High-Throughput Imaging of Serum Bactericidal Assays

Cecilia Villanueva, University of Kansas

Microbiology: Bacteriology

O-090

The Effects of CC16 on Mucin Production in Primary Human Bronchial and Nasal Epithelial Cells

Mariana McCune, University of Arizona

Immunology: Basic Immunology

Oral Session 2: Microbiology and Social and Behavioral Sciences and Public Health

Saturday, November 4, 8:00 a.m. – 9:15 a.m.

Room 121 ABC

O-091

Visualization of Esx-1 during Mycobacterial Communication

Belle Henry, University of California, San Francisco

Microbiology: Microbial Physiology

O-092

Racial Disparities in Mortality among Highly Elite Persons

Danielle Gaskin, George Washington University

Social and Behavioral Sciences and Public Health: Public Health and Epidemiology/Biostatistics

O-093

Farmer's Markets: Community Impact and Factors That Determine Their Success

Fatima Ajose, Henry Ford Health System

Social and Behavioral Sciences and Public Health: Public Health and Epidemiology/Biostatistics

O-094

Digital Data Reconstruction and Statistical Evaluation of Cancer Biomarkers

Seher Ali, City College of New York

Social and Behavioral Sciences and Public Health: Public Health and Epidemiology/Biostatistics

Student Oral Presenters Listing

O-095

Assessing the Impact of ACCURE Nurse Navigators on Improving Cancer Treatment Compliance
Fatima Guerrab, University of North Carolina, Chapel Hill

Social and Behavioral Sciences and Public Health: Sociology

Oral Session 2: Neuroscience

Saturday, November 4, 8:00 a.m. – 9:15 a.m.
Room 131 AB

O-096

RNA Sequencing in Mouse Neurons Reveals Regulatory Function of the nBAF Complex In Neurons
Daniel Gutierrez, University of California, Irvine
Neuroscience: Neurobiology

O-097

Characterizing Brainstem-Midbrain Circuitry Mediating Aversion-Related Behaviors
Jessica Du, University of California, Berkeley
Neuroscience: Neurobiology

O-098

Investigating Environmental Factors Associated with Autism Spectrum Disorder; Effects of Methylene Chloride on Neurodevelopment in Zebrafish
Juvi Ruffatto, Oberlin College
Neuroscience: Neurobiology

O-099

Investigating Cre Expression Patterns under Different *C. elegans* Neuron-Specific Promoters
Sierra Lear, Tulane University
Neuroscience: Neurobiology

O-100

Context-Dependent Modification of the Sequential Order of Elements in a Complex Learned Behavior
Christian Monroy Hernandez, University of California, San Francisco
Neuroscience: Neuroscience

Oral Session 2: Neuroscience

Saturday, November 4, 8:00 a.m. – 9:15 a.m.
Room 122 ABC

O-101

An Induced Neuronal Cell Model to Study Etiological Features of Schizophrenia
Paxton Lozano, University of Southern California
Neuroscience: Neurobiology

O-102

Exploring Mitochondrial Protein Homeostasis in Peripheral Axons
Kennedy Goldsborough, Harvard Medical School and Boston Children's Hospital
Neuroscience: Neurobiology

O-103

Adrenergic Signaling Mediates Synapse Elimination in Developing Central Nervous System by Induction of Astrocyte-Derived Interleukin-33
Olga Vafaeva, Hunter College (CUNY)
Neuroscience: Neurobiology

O-104

Dose and Time Dependent Changes to Rotation Behavior and Immunoreactivity of Tyrosine Hydroxylase Staining in 6-OHDA Lesion Mice
Kia Thomas, Emory University
Neuroscience: Neurobiology

O-105

Determining the Effects of Chronic Interferon Stimulation on Heme Oxygenase Expression in Human Monocyte Derived Macrophages
Bryan Cobo, University of Puerto Rico, San Juan
Neuroscience: Neurobiology

“The conference was a wonderful, amazing experience that allowed me to explore a diverse set of disciplines while networking with fellow scientists. It reaffirmed my interest in the biomedical research field and has given me even more encouragement to follow through with it.”

Student Oral Presenters Listing

Oral Session 2: Physiology and Cell Biology

Saturday, November 4, 8:00 a.m. – 9:15 a.m.

Room 222 AB

O-106

Natriuretic Peptides Stimulate cGMP Production in the Mouse Inner Ear

Joel Madson, *University of Minnesota Medical School*

Physiology: Physiology

O-107

Exercise-Induced Bronchoconstriction on Oxygen Deficit and Oxygen Debt in Athletes and Sedentary Individuals during Exercise

Alexandria Skipper, *University of West Alabama*

Physiology: Physiology

O-108

Regrowing a Tail: Does Regeneration Catch up to Normal Size?

Alexis Saucedo-Quintero, *University of Nevada, Las Vegas*

Physiology: Physiology

O-109

Acute Kidney Injury after Minimally Invasive Lung Lobectomy: A Retrospective Analysis

Jovanka Noel, *Memorial Sloan Kettering Cancer Center*

Physiology: Physiology

O-110

Do Ras GTPases Mobilize Exocyst Complexes to Distinct Sub-Cellular Organelles to Promote Oncogenesis?

Jane-Frances Aruma, *Lincoln University of Pennsylvania*

Cell Biology: Molecular Imaging

Oral Session 2: Social and Behavioral Sciences and Public Health

Saturday, November 4, 8:00 a.m. – 9:15 a.m.

Room 124 AB

O-111

Understanding the Role of Spirituality in the Well-Being of Latino Patients with Advanced Cancer

Iovana Bonfante Gonzalez, *Memorial Sloan Kettering Cancer Center*

Social and Behavioral Sciences and Public Health: Psychology

O-112

The Influence of Genetic Plasticity and Socioeconomic Status on Brain Morphology

Gabrielle Akcelik, *University of Chicago*

Social and Behavioral Sciences and Public Health: Psychology

O-113

Does Training Impact Police Officers' Race Bias in Their Decisions to Shoot?

Brianna Benjamin, *Michigan State University*

Social and Behavioral Sciences and Public Health: Psychology

O-114

Outcomes of Proximal Gastrectomy for Patients with Gastroesophageal Adenocarcinoma: A Retrospective Study

Fadia Ahmad, *City College of New York*

Social and Behavioral Sciences and Public Health: Public Health and Epidemiology/Biostatistics



Student Oral Presenters Listing

O-115

Suicidal Ideation and Attempts among African American Youth Who Present to an Urban Emergency Department
Bria Goode, Center for Diversity in Public Health Leadership Training at Kennedy Krieger Institute Social and Behavioral Sciences and Public Health
Public Health and Epidemiology/Biostatistics

Oral Session 2: Social and Behavioral Sciences and Public Health

Saturday, November 4, 8:00 a.m. – 9:15 a.m.
Room 129 AB

O-116

Assessing Regional Mental Health Treatment Access amongst Children Aged 2-17 Years
Sarah Tayel, Center for Diversity in Public Health Leadership Training at Kennedy Krieger Institute Social and Behavioral Sciences and Public Health
Public Health and Epidemiology/Biostatistics

O-117

The Role of Parental Insurance in Young Adults' Willingness to Take PrEP
Kelvin Moore, Center for Diversity in Public Health Leadership Training at Kennedy Krieger Institute Social and Behavioral Sciences and Public Health
Public Health and Epidemiology/Biostatistics

O-118

Spinal Bracing in Patients with Cancer: Indications and Outcomes
Nicole Agaronnik, Memorial Sloan Kettering Cancer Center
Social and Behavioral Sciences and Public Health: Public Health and Epidemiology/Biostatistics

O-119

DNA Methylation and Obesity in Survivors of Pediatric Acute Leukemia (ALL): A Report from the Childhood Cancer Survivor Study (CCSS)
Vidal Arroyo, Baylor College of Medicine
Social and Behavioral Sciences and Public Health: Public Health and Epidemiology/Biostatistics

O-120

Context Matters: Surveying Community Awareness and Perceptions Surrounding HIV Pre-Exposure Prophylaxis (PrEP) Implementation
Vernell Brown, Morehouse College
Social and Behavioral Sciences and Public Health: Public Health and Epidemiology/Biostatistics

“Out of all the lessons I learned in ABRCMS, the most valuable must be the importance of networking. I learned to step out of my comfort zone in many ways, from travelling alone for the first time to speaking to people I had never met before.”

ABRCMS Exhibit Hall Passport

The Exhibit Hall Passport offers you the chance to win prizes while exploring the programs and opportunities within the ABRCMS exhibit hall. Instructions for participating in the Exhibit Hall Passport can be found on the back of this card.

You could win one of the following prizes:

- Amazon Echo Dot
- Bose Speaker
- \$50 Visa Gift Card
- \$25 iTunes Gift Card

 <p>ACS Chemistry for Life®</p> <p>Booth #617</p>	 <p>BOISE STATE UNIVERSITY COLLEGE OF ARTS AND SCIENCES Biomolecular Sciences Graduate Program</p> <p>Booth #1116</p>	 <p>Genentech A Member of the Roche Group</p> <p>Booth #735</p>	 <p>MCW GRADUATE SCHOOL</p> <p>Booth #503</p>
 <p>NYU School of Medicine</p> <p>Booth #401</p>	 <p>NOVARTIS</p> <p>Booth #701</p>	 <p>ROSS UNIVERSITY SCHOOL OF MEDICINE</p> <p>Booth #538</p>	 <p>SOT Society of Toxicology</p> <p>Booth #435</p>
 <p>UAB THE UNIVERSITY OF ALABAMA AT BIRMINGHAM Knowledge that will change your world</p> <p>Booth #222</p>	 <p>USF UNIVERSITY OF SOUTH FLORIDA</p> <p>Booth #411</p>	 <p>WISCONSIN UNIVERSITY OF WISCONSIN-MADISON</p> <p>Booth #1016</p>	 <p>UNIVERSITY OF VIRGINIA Biomedical Sciences</p> <p>Booth #233</p>



Drop off completed form at ASM Booth #700 by 10:00 a.m., Saturday, November 4.

Here's How the Exhibit Hall Passport Works

- Visit the booths of each participating exhibitor and have them stamp their section of the passport grid.
- After the grid is complete, enter your contact information and submit your card at the **ASM Booth #700**.
- Drop off completed card by **10:00 a.m. on Saturday, November 4** to be eligible for the drawing.
- Winners will be posted on Saturday, November 4 at 11:00 a.m. at the ASM Booth # 700.
- You do not need to be present to win.

Your Contact Information

Name _____

University _____

Phone _____

Email _____

Registration Type (Circle one)

Student

Non Student

Exhibitor

Exhibit Hours

Thursday, November 2

1:45 p.m. – 5:30 p.m.

Friday, November 3

10:15 a.m. – 12:00 p.m.

3:00 p.m. – 6:00 p.m.

Saturday, November 4

9:15 a.m. – 12:00 p.m.

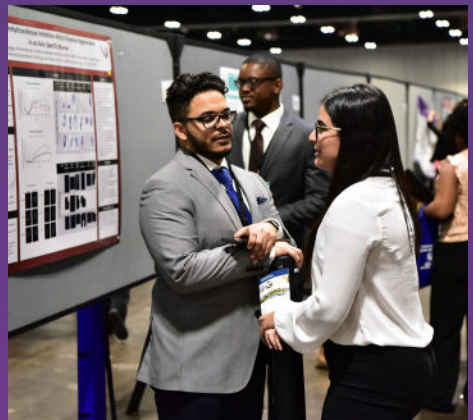


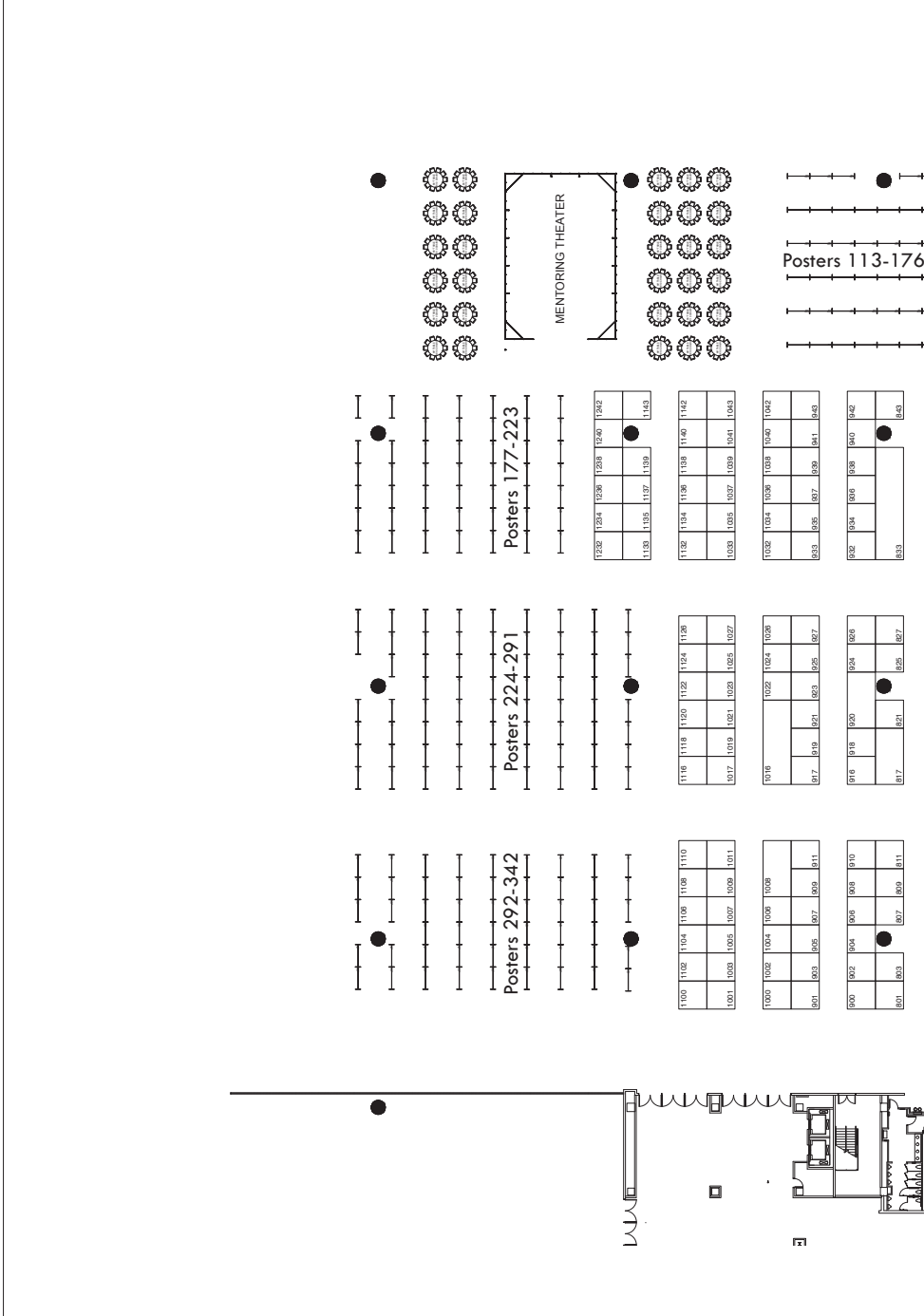
“I always thought that being a scientist was for “other” people, but it is for me!”

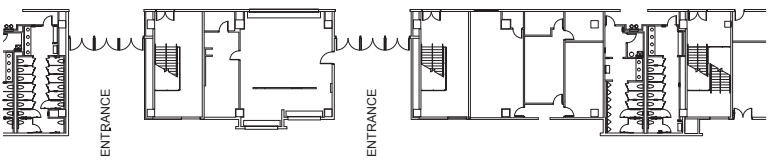


“ABRCMS has been an amazing opportunity for me to connect with and advise undergraduate students in the sciences. My goal was to inspire students to continue to pursue their endeavors in science and to have the confidence and tact to position themselves as excellent graduate school and medical school applicants and once accepted to take advantage of opportunities and excel at the graduate level.”

“Thank you for the extraordinary opportunity to have been able to be not only encouraged, but also inspired by the amazing people at the conference. Being a first generation Hispanic woman in engineering at a community college, I am beyond grateful for such a wonderful opportunity to grow and learn so much from everyone.”





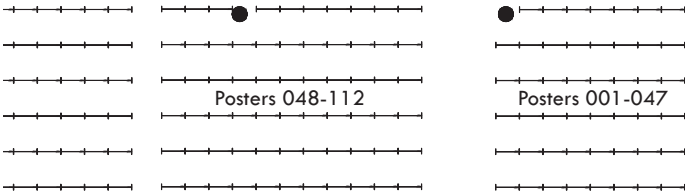


600	604	606	603	610					
701	705	707	709	711					
700	706	708	710						
501	503	505	507	509	511				
600	602	606	604	610					
501	503	507	509	511					
500	502	504	506	508	510				
501	505	507	509	511					
400	402	404	406	408	410				
301					309				
FASEB Row									
300	302	304	306	308	310				
201	203			207	209	211			
NIH Row									
500	502	504	506	508	510				
101	105	107	109	111					
100	102	104	106	108	110				
816	818	820	822	824	826				
717	719	721	723	725	727				
716		720	722	724					
617	619		623	625	627				
616	618	620	622	624	626				
517	519	521		525	527				
516	518	520	522	524	526				
417	419	421	423	425	427				
416	418	420	422	424	426				
317	319	321	323	325	327				
316	318	320		324	326				
217	219	121		225	227				
216	218	220	222						
117	119	121	123	125	127				
116	118	120	122		126				
552	554	556	558	560	562				
452	454	456	458	460	462				
352	354	356	358	360	362				
252	254	256	258	260	262				
152	154		158		162				



Posters 048-112

Posters 001-047



Exhibitor Listing & Booth Numbers

(as of October 18, 2017)

A.T. Still University of Health Sciences	506	Boise State University	1142
AAVMC-Association of American Veterinary Medical Colleges	908	Boise State University, Biomolecular Sciences Ph.D. Program	1116
Alabama College of Osteopathic Medicine	504	Boston University Neuroscience	1019
Albert Einstein College of Medicine- Graduate Division of Biomedical Sciences	817	Boston University School of Medicine, Graduate Medical Sciences	1017
American Aging Association	318	Boston University, Bioinformatics Graduate Program	1021
American Association for Cancer Research (AACR)	743	Brandeis University (Division of Science)	940
American Association for the Advancement of Science (AAAS), Education and Human Resources	441	Broad Institute of MIT and Harvard	707
American Association of Anatomists	323	Brown School at Washington University in St. Louis	1011
American Association of Colleges of Osteopathic Medicine (AACOM)	510	Brown University Graduate Programs in Biology	221
American Chemical Society, Department of Diversity Programs	617	Brown University Graduate School	219
American Heart Association/ American Stroke Association, Health Equity	217	Brown University Medical School	220
American Physiological Society (APS)	317	Brown University, The Leadership Alliance	218
American Society for Biochemistry & Molecular Biology	801	Burrell College of Osteopathic Medicine	527
American Society for Cell Biology	934	California Institute of Technology (Caltech)	926
American Society of Human Genetics	141	Caltech-Amgen Scholars and WAVE Fellows	924
American Society for Investigative Pathology (ASIP)	306	Campbell University College of Pharmacy & Health Sciences	1036
American Society for Microbiology	700	Case Western Reserve University	436
American Society for Pharmacology & Experimental Therapeutics (ASPET)	316	Case Western Reserve University	438
American Veterinary Medical Association	910	Case Western Reserve University	440
Arizona State University	134	Case Western Reserve University-School of Medicine, Biomedical Ph.D. Programs 432	
Arizona State University (ASU) Biomedical Informatics	917	Center for Brains, Minds and Machines	710
Association of American Medical Colleges	138	Center for Engineering MechanoBiology	741
Association of Biomolecular Resource Facilities	304	Chicago State University College of Pharmacy	123
Auburn University College of Sciences and Mathematics	338	Cincinnati Children's Research Foundation & University of Cincinnati College of Medicine	442
Augusta University, The Graduate School	906	City College of New York	1005
Ball State University	236	City of Hope, Irell and Manella Graduate School of Biological Sciences 808	
Ball State University: Graduate School	1043	City University of New York, The Graduate Center	1003
Baylor College of Medicine, Graduate School of Biomedical Sciences	326	Cleveland Clinic Lerner College of Medicine	434
Binghamton University	1039	Cold Spring Harbor Laboratory, Watson School of Biological Sciences	433
Biomedical Engineering Society (BMES)	319		
Biophysical Society, Committee for Inclusion and Diversity	500		

Exhibitor Listing & Booth Numbers

College of Medicine MSTP/ SUCCESS Program/Biomedical Sciences Graduate Program/Discovery PREP	723	GlaxoSmithKline	742
Columbia University Medical Center, Coordinated Doctoral Program in Biomedical Sciences	400	Global Health Fellows Program II at the Public Health Institute	133
Cornell University College of Veterinary Medicine	909	Graduate School of Biomedical Sciences at Mount Sinai	843
Cornell University, Graduate School	422	Gulf Coast Consortia	324
Cornell/Rockefeller/Sloan-Kettering Tri-Institutional Ph.D. Programs	418	Harvard GSAS, Integrated Life Sciences (HILS), and T.H. Chan School of Public Health	901
D. E. Shaw Research	1023	Harvard University, Biophysics, Chemical Biology & Systems Biology Programs	905
Dartmouth College, Graduate Programs	1008	Harvard University, Division of Medical Sciences & M.D.-Ph.D. Program	907
Des Moines University	518	Harvard University; Molecules, Cells & Organisms Ph.D. Training & School of Engineer./App. Sciences	903
Drexel University	1120	Heritage University	1143
Duke University School of Medicine, Doctor of Physical Therapy Program	107	Higher Education Recruitment Consortium	437
Duke University, Graduate School	109	Howard Hughes Medical Institute	417
Duke University, School of Medicine, Office of Biomedical Graduate Diversity	105	Howard University, Graduate School, Office of the Dean	127
Duquesne University	142	Indiana University Graduate School/ Indiana University Purdue University Indianapolis	1135
Edward Via College of Osteopathic Medicine	511	Indiana University School of Medicine Biomedical Science Graduate Programs	816
Emory University School of Medicine, M.D./Ph.D. Program	404	Indiana University, The University Graduate School	719
Emory University School of Medicine/ Postdoc Ofc/FIRST Pgrm	408	Indiana University - Bloomington, Department of Biology,	721
Emory University, Department of Chemistry	406	Institute of International Education: Fulbright U.S. Student Program & Gilman International Program	941
Emory University, Graduate Division of Biological and Biomedical Sciences	402	Iowa State University, Department of Biomedical Sciences	1238
Endocrine Society	300	Jackson Laboratory	927
FASEB Ink	301	Johns Hopkins School of Medicine and Public Health	800
FASEB MARC Career Corner	309	Johns Hopkins University Arts & Sciences and Engineering	804
FASEB MARC Peer Mentor Pod	320	Johns Hopkins University School of Arts and Sciences	806
Florida International University, Student Access & Success/ College of Medicine/ Biomedical Engineering	106	Kansas City University of Medicine & Biosciences, Office of Admissions	517
Genentech	735	Kaplan Partner Solutions	911
George Washington School of Medicine and Health Sciences	1118	Keck Graduate Institute	1138
Georgetown University, Biomedical Graduate Education	836	Keck School of Medicine of USC	625
Georgia Campus - Philadelphia College of Osteopathic Medicine	1004		
Georgia Institute of Technology and Emory University, Biomedical Engineering	410		

Exhibitor Listing & Booth Numbers

Keystone Symposia on Molecular and Cellular Biology, Diversity in Life Science Programs	237	National Institute of Allergy and Infectious Diseases (NIAID)	206
Lake Erie College of Osteopathic Medicine (LECOM)	1006	National Institute of Arthritis and Musculoskeletal and Skin Diseases (NIAMS)	211
Lawrence Berkeley National Laboratory	110	National Institute of Biomedical Imaging and Bioengineering, Div. of Interdisciplinary Training	203
Lehigh University Biological Sciences	1132	National Institute of Dental and Craniofacial Research, National Institutes of Health	204
Lincoln Memorial University - DeBusk College of Osteopathic Medicine	520	National Institute of Diabetes and Digestive and Kidney Diseases (NIDDK)	216
Louis V. Gerstner, Jr. Graduate School of Biomedical Sciences, Memorial Sloan Kettering Cancer Center	426	National Institute of Mental Health	202
Loyola University Chicago, Health Sciences Division	623	National Institute of Neurological Disorders and Stroke	208
Marian University College of Osteopathic Medicine	516	National Institute on Alcohol Abuse and Alcoholism (NIAAA)	210
Marshall University School of Medicine, Biomedical Sciences, Clinical & Translational Science	1033	National Institutes of Health, National Institutes of General Medical Sciences	201
Massachusetts Institute of Technology	706	National Institutes of Health, Office of Intramural Training & Education	200
Massachusetts Institute of Technology, Biology Department	708	National Research Mentoring Network	235
Mayo Clinic, College of Medicine Office for Diversity	111	National Science Foundation	242
Medical College of Wisconsin (MCW) Graduate School & MSTP	503	Naval Research Enterprise Internship Program	126
Medical University of South Carolina, College of Graduate Studies	832	New Mexico State University, Graduate School	1037
Meharry Medical College, School of Graduate Studies and Research	117	New York Institute of Technology College of Osteopathic Medicine	535
Miami University Graduate School	336	New York University Department of Chemistry	1126
Michigan Medicine, Office for Health Equity & Inclusion (OHEI)	824	New York University School of Medicine, Sackler Institute	401
Michigan State University College of Osteopathic Medicine	519	New York University Tandon School of Engineering	732
Michigan State University, Graduate School	1100	NIH/NIEHS, Office of Science Education & Diversity	209
Midwestern University	524	NNCI SENIC	1236
Mississippi State University	108	North Carolina A&T State University	120
Morehouse College, Public Health Sciences Institute, "Project Imhotep" Summer Internship	119	North Carolina Central University School of Graduate Studies	122
Morehouse School of Medicine	840	Northeastern University	1009
National Academies of Sciences, Engineering, and Medicine, Fellowship Programs	143	Northwestern University, The Graduate School	736
National Cancer Institute	234	Nova Southeastern University	1140
National Heart, Lung and Blood Institute, National Institutes of Health	207	Novartis Institutes for BioMedical Research, Diversity & Inclusion	701
		Oakland University William Beaumont, Diversity & Inclusion	118

Exhibitor Listing & Booth Numbers

Ohio State University, College of Arts & Sciences, The	725	Stanford University, Office of Graduate Education, Programs and Diversity	601
Ohio State University, College of Veterinary Medicine, The	1242	STEP-UP, Children's Hospital Los Angeles	116
Ohio University Heritage College of Osteopathic Medicine	534	Stony Brook University	337
Old Dominion University	1022	SUNY Downstate Medical Center, School of Graduate Studies	540
Pacific Northwest University of Health Sciences	526	Teratology Society	310
Penn State College of Medicine, Biomedical Science Graduate Programs	810	Texas A&M Health Science Center	1108
Penn State University, Graduate School	716	Texas A&M University-Office of Graduate and Professional Studies	1106
Philadelphia College of Osteopathic Medicine	508	Texas A&M University, Chemistry	1110
Plant Science Research Network (PSRN)	239	Texas Chiropractic College	1134
Princeton University	543	Texas Tech University Health Sciences Center, Graduate School of Biomedical Sciences	803
Procter & Gamble	132	Thomas Jefferson University, Jefferson College of Biomedical Sciences	933
Protein Society	302	Touro University California	525
Purdue University, The Graduate School	1102	Towson University	135
Regeneron Pharmaceuticals	605	Tufts University-Friedman School of Nutrition Science and Policy	1240
Rensselaer Polytechnic Institute, Graduate Admissions	818	Tufts University, Sackler School of Graduate Biomedical Sciences	419
Rice University, Graduate Studies	327	Tulane University Health Sciences, Graduate Program in Biomedical Sciences	1234
Rockefeller University, Graduate Program in Biomedical Sciences	424	UCLA David Geffen School of Medicine	609
Rosalind Franklin University of Medicine and Science/School of Graduate and Postdoctoral Studies	642	UCLA Graduate Division	607
Ross University School of Medicine	538	UCLA Graduate Programs in Bioscience	611
Roswell Park Cancer Institute	423	Uniformed Services University of the Health Sciences	232
Rowan University School of Osteopathic Medicine	932	Universidad Autonoma de Guadalajara, School of Medicine	1040
Rush University Graduate College Chicago	1001	University of Alabama at Birmingham	222
Rutgers University School of Graduate Studies	724	University of Alabama, College of Arts and Sciences, The	243
Rutgers University-Newark	640	University of Arizona, Graduate College	340
Saint Louis University	1032	University of Arkansas for Medical Sciences, Graduate School	405
Scripps Research Institute, Doctoral Program in Chemical and Biological Sciences	104	University at Buffalo (SUNY) School of Engineering	421
Sherman College of Chiropractic	1232	University at Buffalo (SUNY), Ph.D. Program in Biomedical Sciences (PPBS)	425
Society for Developmental Biology (SDB)	321	University at Buffalo, State University of New York	427
Society for Experimental Biology and Medicine	308	University of California (UC) San Francisco Graduate Division	606
Society of Toxicology	435		
St. Jude Children's Research Hospital	600		

Exhibitor Listing & Booth Numbers

University of California San Francisco, Medical Scientist Training Program	608	University of Kentucky, College of Pharmacy	125
University of California, Berkeley, Division of Biological Sciences	610	University of Kentucky, College of Medicine	1034
University of California, Davis, Graduate Studies	603	University of Louisville Integrated Programs in Biomedical Sciences	536
University of California, Irvine, Graduate Division	616	University of Maryland Baltimore, STAR-PREP	939
University of California, Merced, Graduate Division	620	University of Maryland School of Medicine, MSTP & Graduate Program in Life Sciences (GPILS)	937
University of California, Riverside, Graduate Division	618	University of Maryland, Baltimore County, Meyerhoff Graduate Fellows Program	935
University of California, San Diego- Graduate Division/Biological Sciences/Bioengineering/Biomedical Sciences	602	University of Maryland, Graduate School	717
University of California, Santa Barbara	622	University of Massachusetts Amherst NEAGEP	341
University of California, Santa Cruz, Physical and Biological Sciences	619	University of Massachusetts Medical School, Graduate School of Biomedical Sciences	1026
University of Chicago, Biological Sciences Division and Medical Scientist Training Program	733	University of Miami, Biomedical Education	834
University of Colorado at Boulder, Colorado Diversity Initiative	502	University of Michigan - MSTP / Pharmacy	820
University of Colorado Denver, Anschutz Medical Campus	705	University of Michigan Chemistry	1024
University of Connecticut Health Center, Graduate Office - Farmington	1133	University of Michigan PREP	822
University of Delaware	537	University of Michigan Program in Biomedical Sciences (Ph.D.)	826
University of Florida - College of Medicine-Graduate Programs	943	University of Minnesota, Biomedical Science Graduate & Undergraduate Programs	709
University of Florida, College of Agricultural and Life Sciences, Microbiology and Cell Science Ph.D. Program	1035	University of Minnesota, Medical Scientist Training Program (M.D./Ph.D.)	711
University of Florida College of Health & Human Performance & ASB American Society of Biomechanics	1007	University of Missouri Div. of Biological Sciences & PREP Scholars Program	635
University of Georgia - Integrated Life Sciences	902	University of Missouri Graduate Studies & College of Engineering	637
University of Georgia - PREP@UGA	900	University of Missouri, Graduate Life Sciences Programs	633
University of Georgia, Graduate School	904	University of Nebraska Medical Center, M.D./Ph.D. Scholars Program	720
University of Houston College of Optometry	1137	University of Nebraska-Lincoln	722
University of Illinois at Chicago College of Medicine GEMS-Graduate Diversity Programs	443	University of New England College of Osteopathic Medicine	532
University of Illinois Bioengineering	825	University of North Carolina at Chapel Hill- Biological/Biomedical Sciences, Ph.D. Pharm. Sciences, & M.D.-Ph.D.	533
University of Illinois, Graduate College	734	University of North Carolina at Chapel Hill (UNC-CH) Gillings School of Global Public Health	225
University of Iowa, Graduate College, Biomedical Sciences, MSTP	727	University of North Carolina - Charlotte, Graduate School	1038
University of Kansas	416	University of North Texas Health Science Center	838
		University of Notre Dame	1042

Exhibitor Listing & Booth Numbers

University of Oklahoma Health Sciences Center-Graduate College	240	University of Texas (UT) Health San Antonio, Long School of Medicine	833
University of Oregon, Biology	539	University of Texas (UT) Health San Antonio, M.D./Ph.D. Program	833
University of Pennsylvania Perelman School of Medicine, Biomedical Graduate Studies, Office of Research and Diversity Training	639, 740	University of Texas (UT) Health San Antonio, Office of Postdoc Affairs	833
University of Pittsburgh and Carnegie Mellon University, MSTP	809	University of Texas M.D. Anderson Cancer Center (UT) Health Graduate School of Biomedical Sciences, The	407
University of Pittsburgh, Biomedical Graduate Programs	811	University of Texas at San Antonio, Department of Biology, The	1136
University of Pittsburgh, Health Sciences Diversity	807	University of Texas School of Biomedical Informatics at Houston, The	325
University of Pittsburgh, Kenneth P. Dietrich Graduate School of Arts and Sciences	1002	University of Texas Southwestern Medical Center, Graduate School of Biomedical Sciences & MSTP	227
University of Pittsburgh, School of Health & Rehabilitation Sciences	139	University of the Incarnate Word School of Osteopathic Medicine	1139
University of Pittsburgh, School of Medicine	942	University of Toledo	121
University of Rhode Island	1104	University of Utah	342
University of Rochester, M.D./Ph.D. Program & Graduate Education and Postdoctoral Affairs	339	University of Virginia, Biomedical Sciences	233
University of San Francisco	936	University of Washington - PREP & Bioengineering	923
University of South Carolina, Biological Sciences	739	University of Washington (UW) School of Public Health	925
University of South Florida - Alfred P. Sloan Foundation University Center of Exemplary Mentoring/Bridge to the Doctorate Program	411	University of Washington M.D./Ph.D., Genome Sciences Department, and Fred Hutchinson Cancer Research Center	921
University of South Florida Morsani College of Medicine - Ph.D. Program in Integrated Biomedical Sciences (PPIBS)	409	University of Washington, Biology, Biochemistry, Biological Physics, Structure & Design, Molecular and Cellular Biology	919
University of Southern California	624	University of Wisconsin-Madison, Bioscience Graduate Programs	1016
University of Southern California - Neuroscience Graduate Program	627	Van Andel Institute Graduate School	821
University of Southern California, Keck School of Medicine	626	Vanderbilt University Graduate Program in Chemistry	102
University of Tennessee/Grad. Div. of Science, Biological & Biomedical Sciences /Grad. Scholars IMSD	1027	Vanderbilt University Medical Scientist Training Program, Office of Biomedical Research Education & Training, School of Medicine Diversity Affairs	101
University of Texas at Arlington, The	737	Vanderbilt University School of Engineering	100
University of Texas at Austin, Cellular and Molecular Biology	1124	Vermont Genetics Network and Vermont EPSCoR	439
University of Texas at Dallas, Department of Bioengineering and Eugene McDermott Graduate Fellows Program	1025	Virginia Commonwealth University, School of Medicine/Graduate Education Program	1041
University of Texas (UT) Health San Antonio, Graduate School of Biomedical Sciences	833	Virginia Maryland College of Veterinary Medicine	938
		Virginia Tech, Multicultural Academic Opportunities Program	335

Exhibitor Listing & Booth Numbers

Virginia Tech PREP & IMSD Program, The	333	Weill Cornell Graduate School of Medical Sciences	501
Virginia Tech, Translational Biology, Medicine, and Health Ph.D. and Virginia Tech Carilion School of Medicine	332	Weill Cornell Medicine Department of Healthcare Policy and Research	1122
Virginia Tech-Wake Forest School of Biomedical Engineering and Sciences	334	Weill Cornell/Rockefeller/Sloan Kettering, Tri-Institutional M.D.-Ph.D. Program	420
Wake Forest University Graduate School of Biomedical Sciences	1000	West Virginia University Health Sciences Center	343
Washington State University	522	West Virginia (WV) School of Osteopathic Medicine	507
Washington University in St. Louis, Biology and Biomedical Sciences	827	Western Michigan University Homer Stryker M.D. School of Medicine	137
Wayne State University	636	Western University of Health Sciences	509
Wayne State University Cancer Biology Graduate Program	634	William Carey University College of Osteopathic Medicine	521
Wayne State University Graduate School	632	Yale Graduate School	916
Wayne State University School of Medicine-Office of Diversity and Inclusion	638	Yale M.D./Ph.D. Program	918
		Yale University	920



NOTES

NOTES

Apply Today!



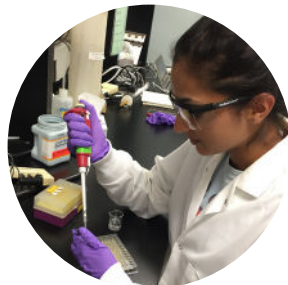
ASM Undergraduate Research Fellowship

Application Deadline: February 15, 2018

Target audience: community college, undergraduate, and post-baccalaureate students

Funding support to:

- participate in a 10-12 week summer research program,
- participate in the ASM Microbe Academy for Professional Development (MAPD), and
- present your research at the ASM Microbe Meeting



ASM Research Capstone Fellowship

Application Deadline: March 1, 2018

Target audience: community college, undergraduate, and post-baccalaureate students - master's level and early-graduate students (prior to taking the preliminary exam)

One year funding support to:

- attend the ASM Microbe Academy for Professional Development (MAPD)
- present at ASM Microbe Meeting



ASM Research Capstone Fellowship

Application Deadline: March 1, 2018

Target audience: doctoral candidates (post-preliminary examination)

Funding support up to three years to:

- attend the ASM Microbe Academy for Professional Development (MAPD),
- present at ASM Microbe Meeting, and
- participate in local/national meetings or courses



Visit: www.asm.org/index.php/findfunding

Come talk to ASM staff in booth #700 to learn more about the fellowship programs and other Education Board resources.

Staff Contact Information

Conference Program & Affiliated Events

Irene Hulede
(202) 942-9295
ihulede@asmusa.org

Exhibits Program & Sponsorship

Ronica Rodela
(202) 942-9228
rrodela@asmusa.org

Student Presentations & Judges Program

Leah Gibbons
(202) 942-9348
lgibbons@asmusa.org

Logistics

Khoa Le
(202) 942-9348
kle@asmusa.org

ABRCMS

ASM Education Department
1752 N Street NW
Washington, DC 20036
abrcms@asmusa.org

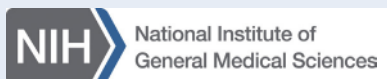


Managed by



AMERICAN
SOCIETY FOR
MICROBIOLOGY

Sponsored by



Visit www.abrcms.org for more information.